

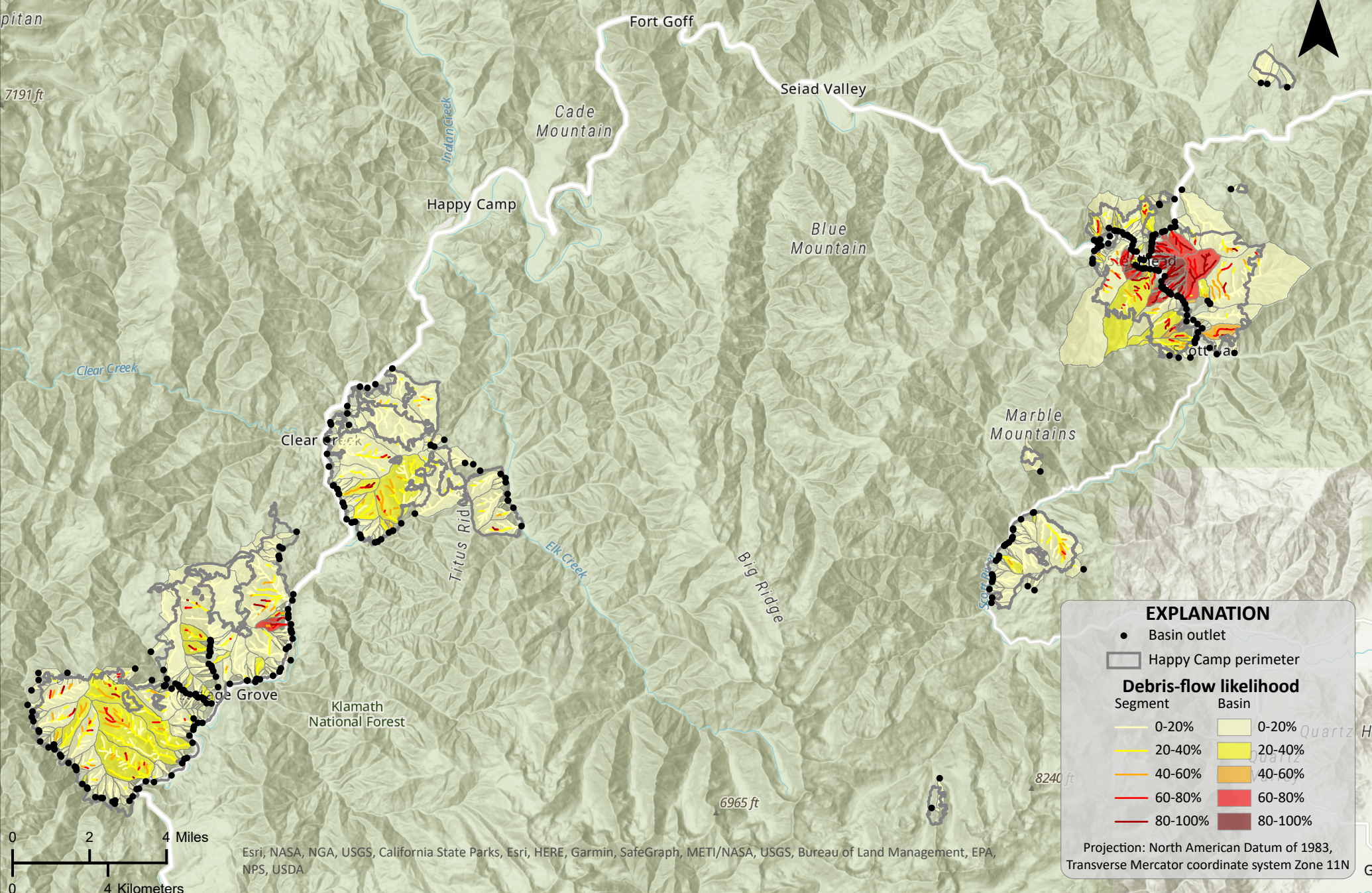
# Happy Camp Complex, Klamath National Forest, California

## Debris-Flow Likelihood

Design storm: Peak 15-minute rainfall intensity 24 mm/h



Data are provisional and subject to revision



**EXPLANATION**

- Basin outlet
- Happy Camp perimeter

**Debris-flow likelihood**

Segment	Basin
0-20%	0-20%
20-40%	20-40%
40-60%	40-60%
60-80%	60-80%
80-100%	80-100%

Projection: North American Datum of 1983, Transverse Mercator coordinate system Zone 11N

Esri, NASA, NGA, USGS, California State Parks, Esri, HERE, Garmin, SafeGraph, METI/NASA, USGS, Bureau of Land Management, EPA, NPS, USDA