

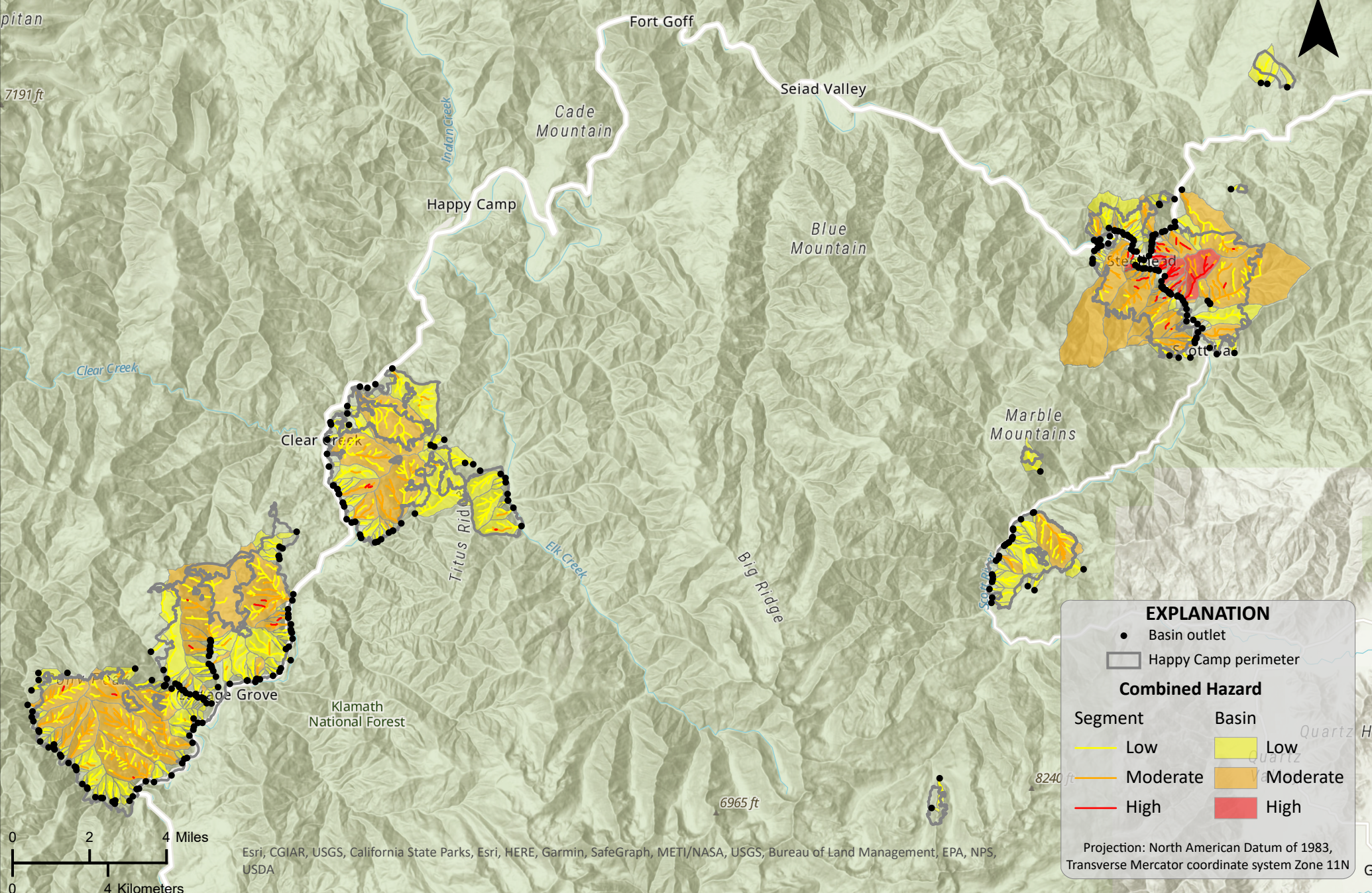
# Happy Camp Complex, Klamath National Forest, California

## Combined Hazard

Design storm: Peak 15-minute rainfall intensity 24 mm/h



Data are provisional and subject to revision



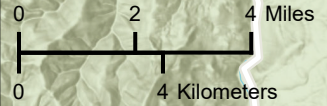
**EXPLANATION**

- Basin outlet
- Happy Camp perimeter

**Combined Hazard**

Segment	Basin
Low	Low
Moderate	Moderate
High	High

Projection: North American Datum of 1983, Transverse Mercator coordinate system Zone 11N



Esri, CGIAR, USGS, California State Parks, Esri, HERE, Garmin, SafeGraph, METI/NASA, USGS, Bureau of Land Management, EPA, NPS, USDA