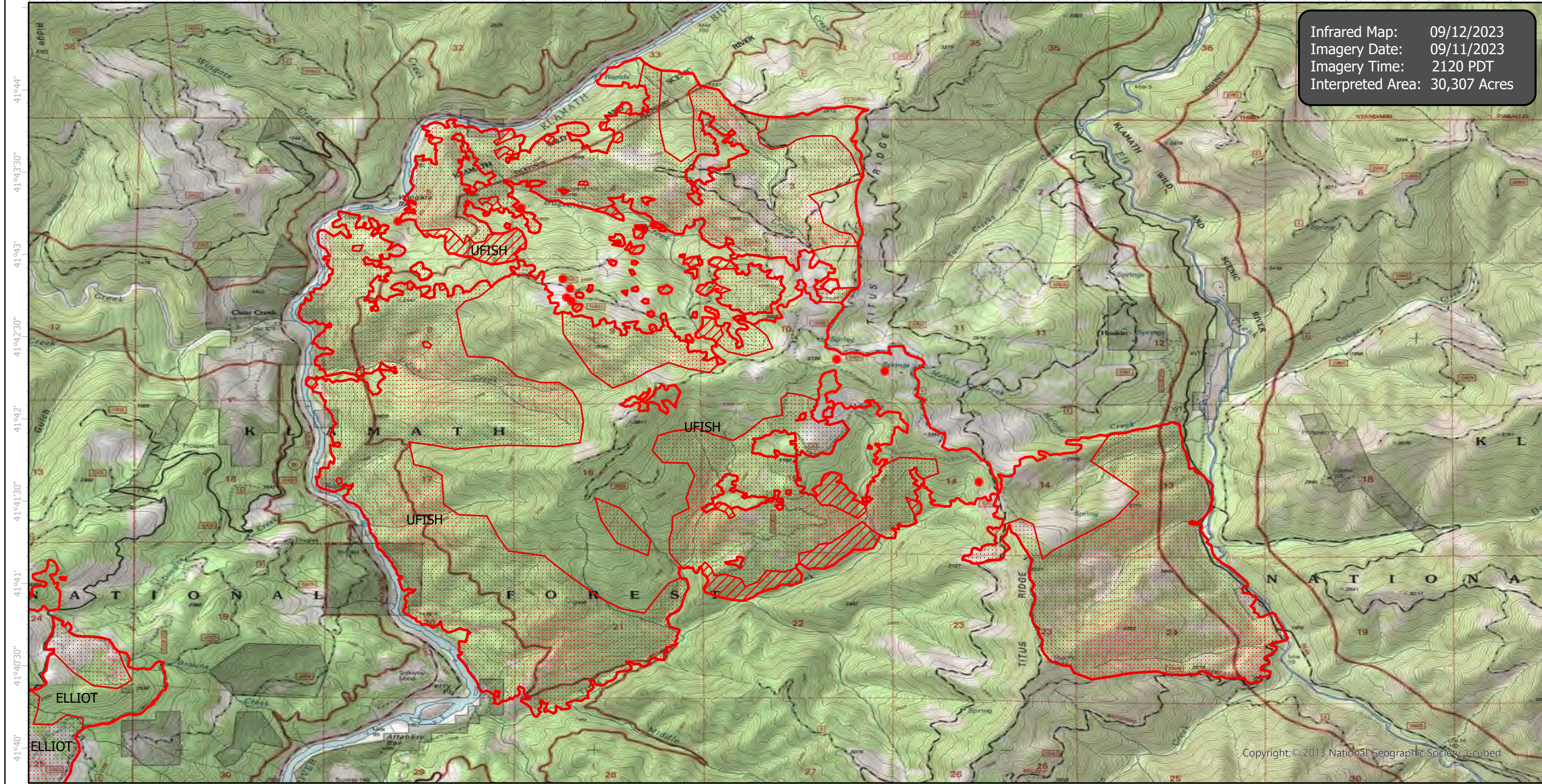


# HappyCampComplex Infrared Map

Incident # (CA-KNF-007022) UFish (6,625 acres)



-123°28'30" -123°28' -123°27'30" -123°27' -123°26'30" -123°26' -123°25'30" -123°25' -123°24'30" -123°24' -123°23'30" -123°23' -123°22'30" -123°22' -123°21'30" -123°21' -123°20'30" -123°20' -123°19'30"



Infrared Map: 09/12/2023  
Imagery Date: 09/11/2023  
Imagery Time: 2120 PDT  
Interpreted Area: 30,307 Acres

-123°28'30" -123°28' -123°27'30" -123°27' -123°26'30" -123°26' -123°25'30" -123°25' -123°24'30" -123°24' -123°23'30" -123°23' -123°22'30" -123°22' -123°21'30" -123°21' -123°20'30" -123°20' -123°19'30"

N  
W E  
S

GCS WGS 1984  
Scale: 1:42,000

0 1 2 Miles

● IR Isolated Heat Source  
◆ Possible IR Heat Source  
□ IR Heat Perimeter

▨ IR Intense Heat  
▤ IR Scattered Heat

Infrared Interrupter: Daniel LeVrier  
email: daniel.levrier@usda.gov