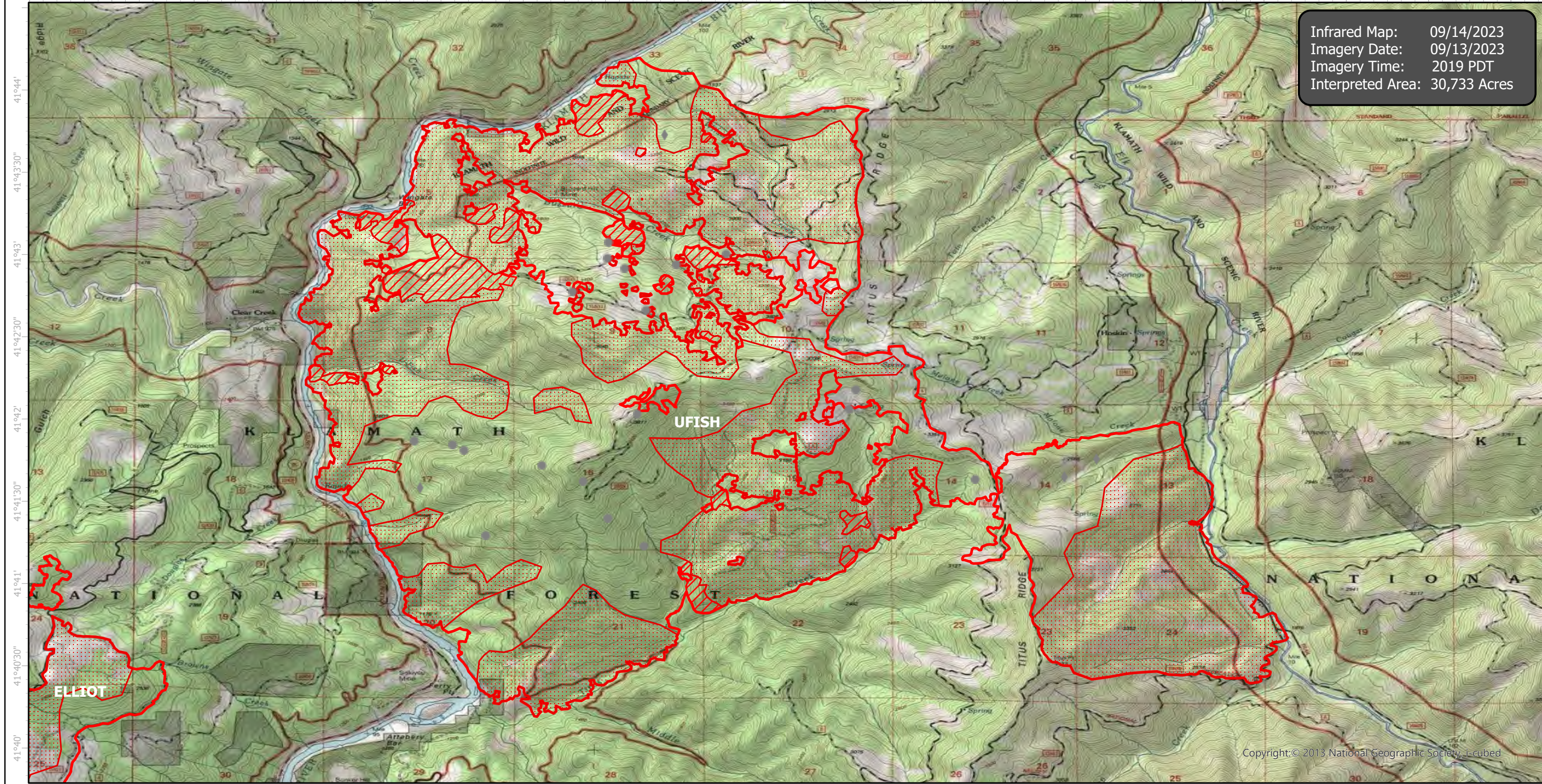


HappyCampComplex Infrared Map

Incident # (CA-KNF-007022) UFish (6,943 acres)



-123°28'30" -123°28' -123°27'30" -123°27' -123°26'30" -123°26' -123°25'30" -123°25' -123°24'30" -123°24' -123°23'30" -123°23' -123°22'30" -123°22' -123°21'30" -123°21' -123°20'30" -123°20' -123°19'30"



Infrared Map: 09/14/2023
Imagery Date: 09/13/2023
Imagery Time: 2019 PDT
Interpreted Area: 30,733 Acres

-123°28'30" -123°28' -123°27'30" -123°27' -123°26'30" -123°26' -123°25'30" -123°25' -123°24'30" -123°24' -123°23'30" -123°23' -123°22'30" -123°22' -123°21'30" -123°21' -123°20'30" -123°20' -123°19'30"

N
W E
S

GCS WGS 1984
Scale: 1:42,000

0 1 2 Miles

● IR Isolated Heat Source
◆ Possible IR Heat Source
▭ IR Heat Perimeter
▨ IR Intense Heat
▩ IR Scattered Heat

Infrared Interrupter: Daniel LeVrier
email: daniel.levrier@usda.gov

Copyright: © 2013 National Geographic Society, i-cubed