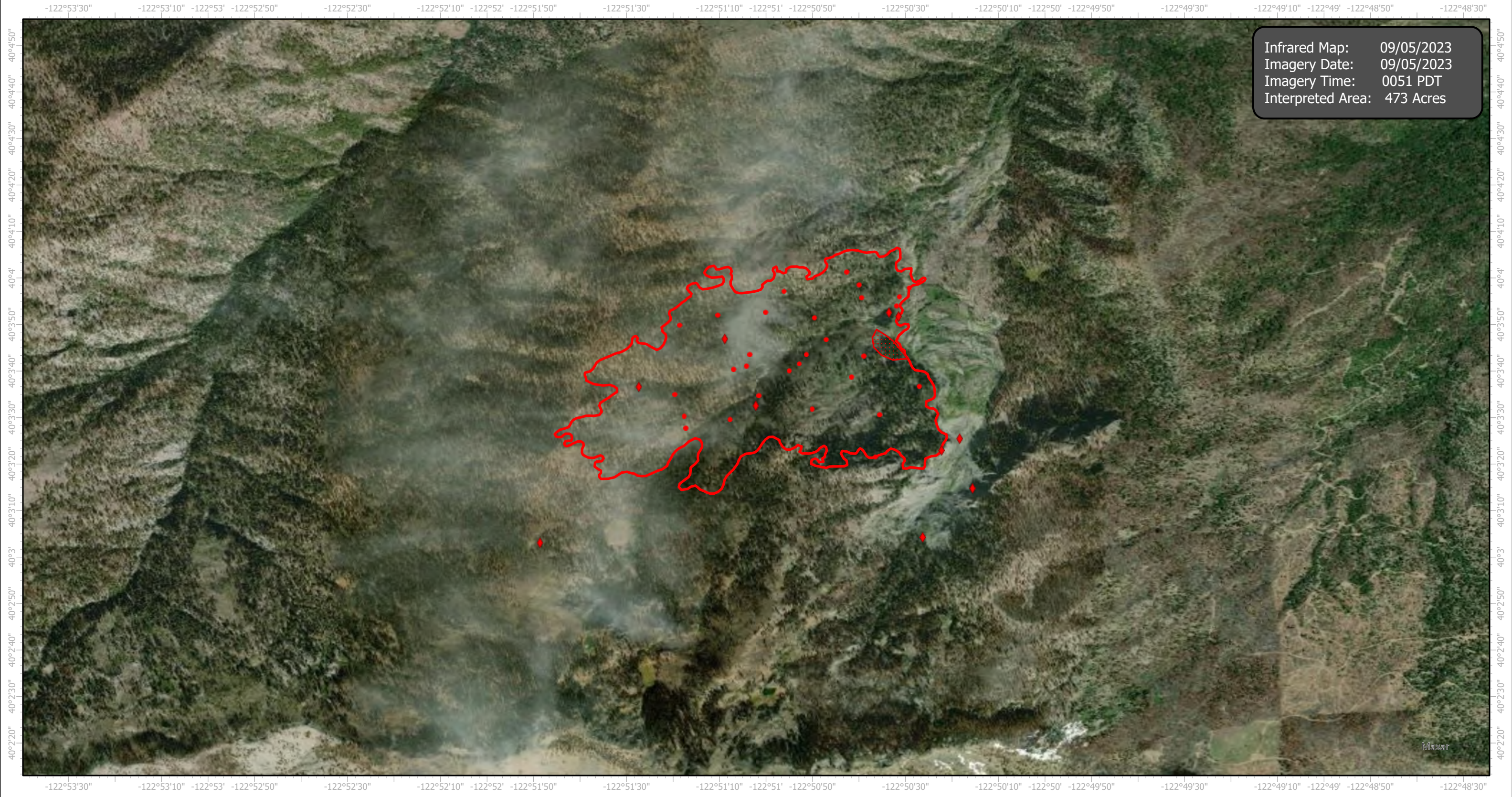
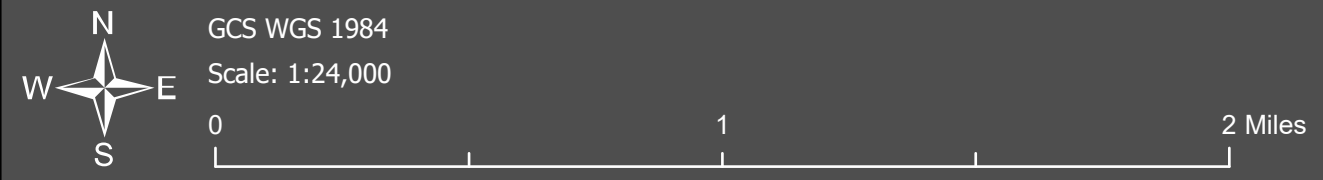


Slide1 Infrared Map

Incident # (CA-MNF-852)



Infrared Map: 09/05/2023
Imagery Date: 09/05/2023
Imagery Time: 0051 PDT
Interpreted Area: 473 Acres



- IR Isolated Heat Source
- ◻ IR Heat Perimeter
- ◊ Possible IR Heat Source
- ▨ IR Scattered Heat

Infrared Interrupter: Daniel LeVrier
email: daniel.levrier@usda.gov