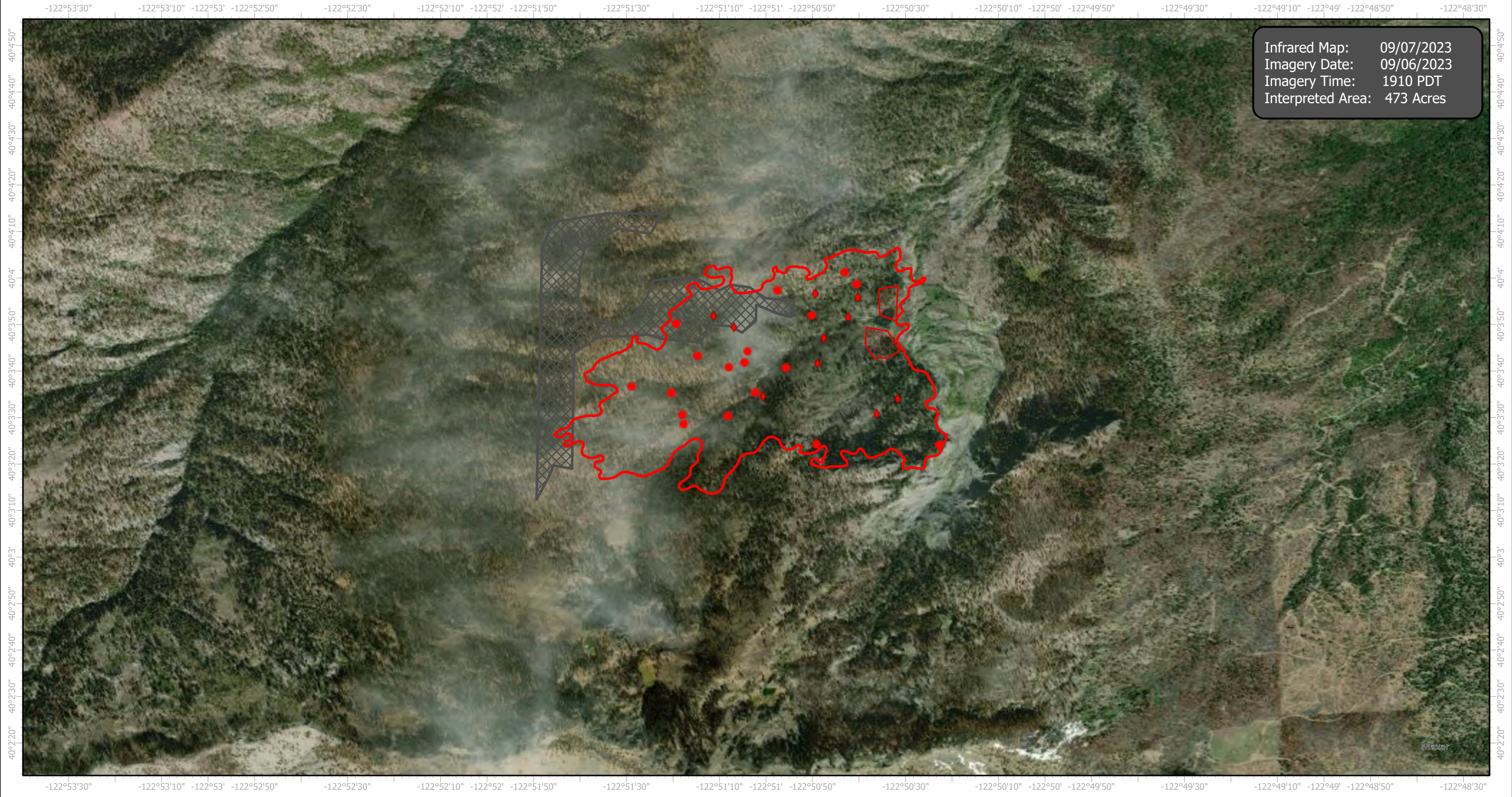
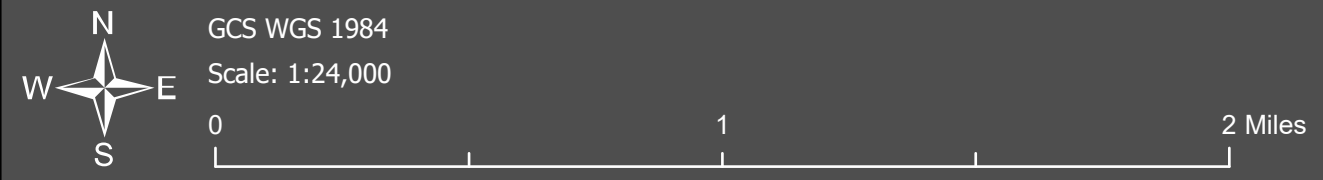


Slide1 Infrared Map

Incident # (CA-MNF-852)



Infrared Map: 09/07/2023
Imagery Date: 09/06/2023
Imagery Time: 1910 PDT
Interpreted Area: 473 Acres



- IR Isolated Heat Source
- ◆ Possible IR Heat Source
- ▣ Cloud Cover
- ▭ IR Heat Perimeter
- ▨ IR Scattered Heat

Infrared Interrupter: Daniel LeVrier
email: daniel.levrier@usda.gov