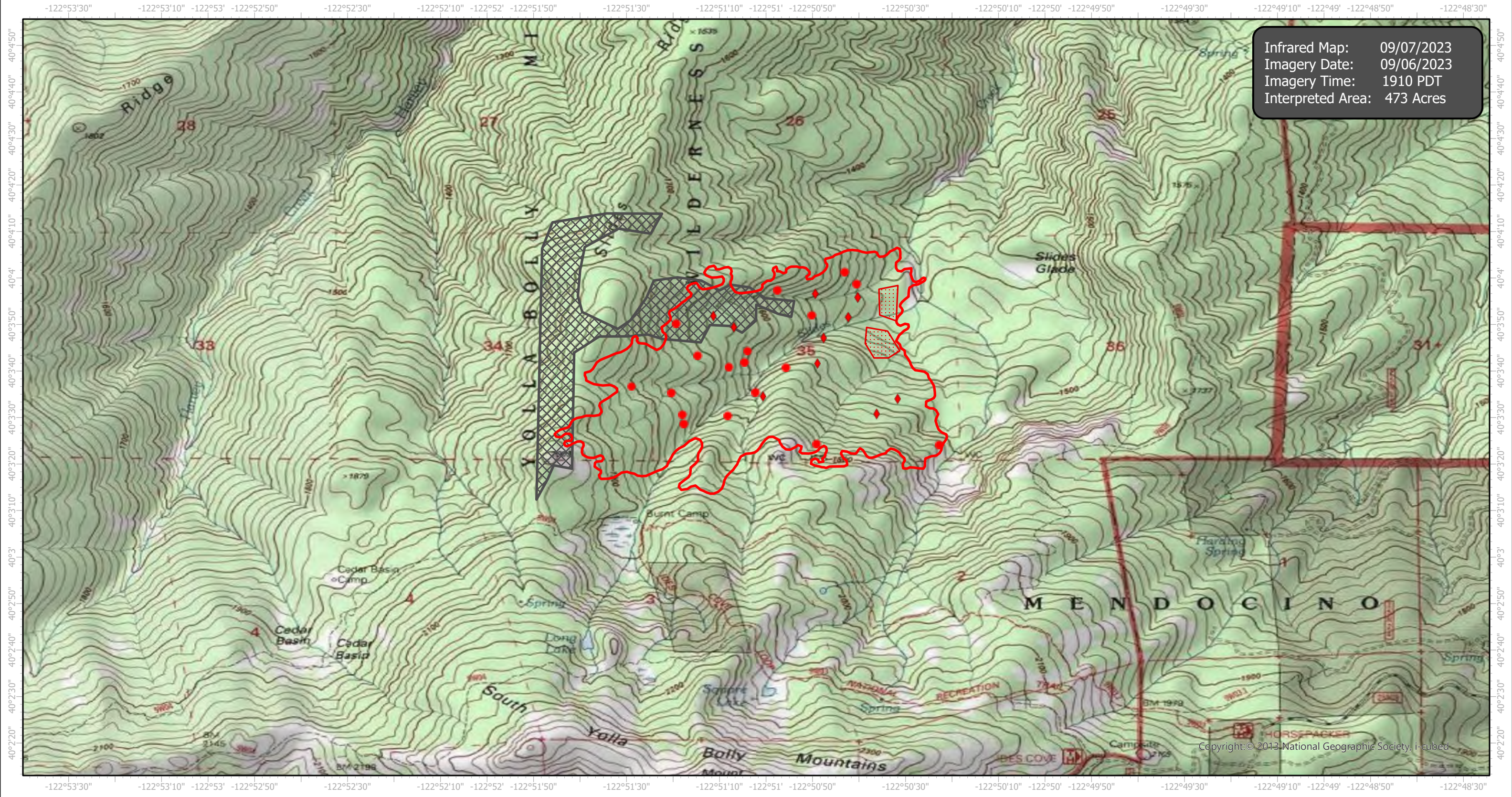
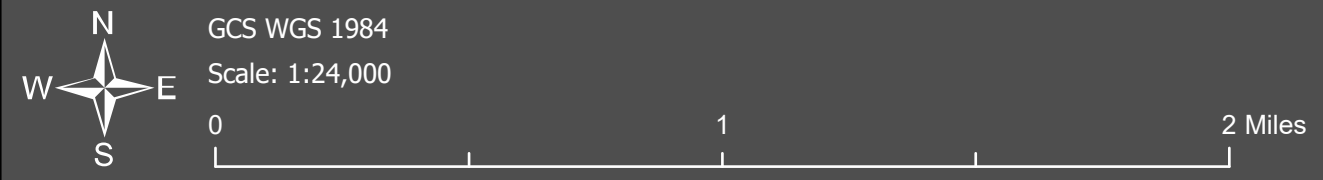


# Slide1 Infrared Map

Incident # (CA-MNF-852)



Infrared Map: 09/07/2023  
Imagery Date: 09/06/2023  
Imagery Time: 1910 PDT  
Interpreted Area: 473 Acres



- IR Isolated Heat Source
- ◆ Possible IR Heat Source
- ▨ Cloud Cover
- ▭ IR Heat Perimeter
- ▨ IR Scattered Heat

Copyright: © 2013 National Geographic Society, i-cubed

Infrared Interrupter: Daniel LeVrier  
email: [daniel.levrier@usda.gov](mailto:daniel.levrier@usda.gov)