

# Pilot Map

## Deep Fire

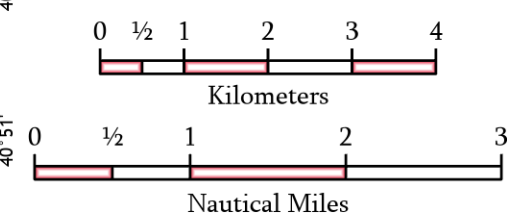
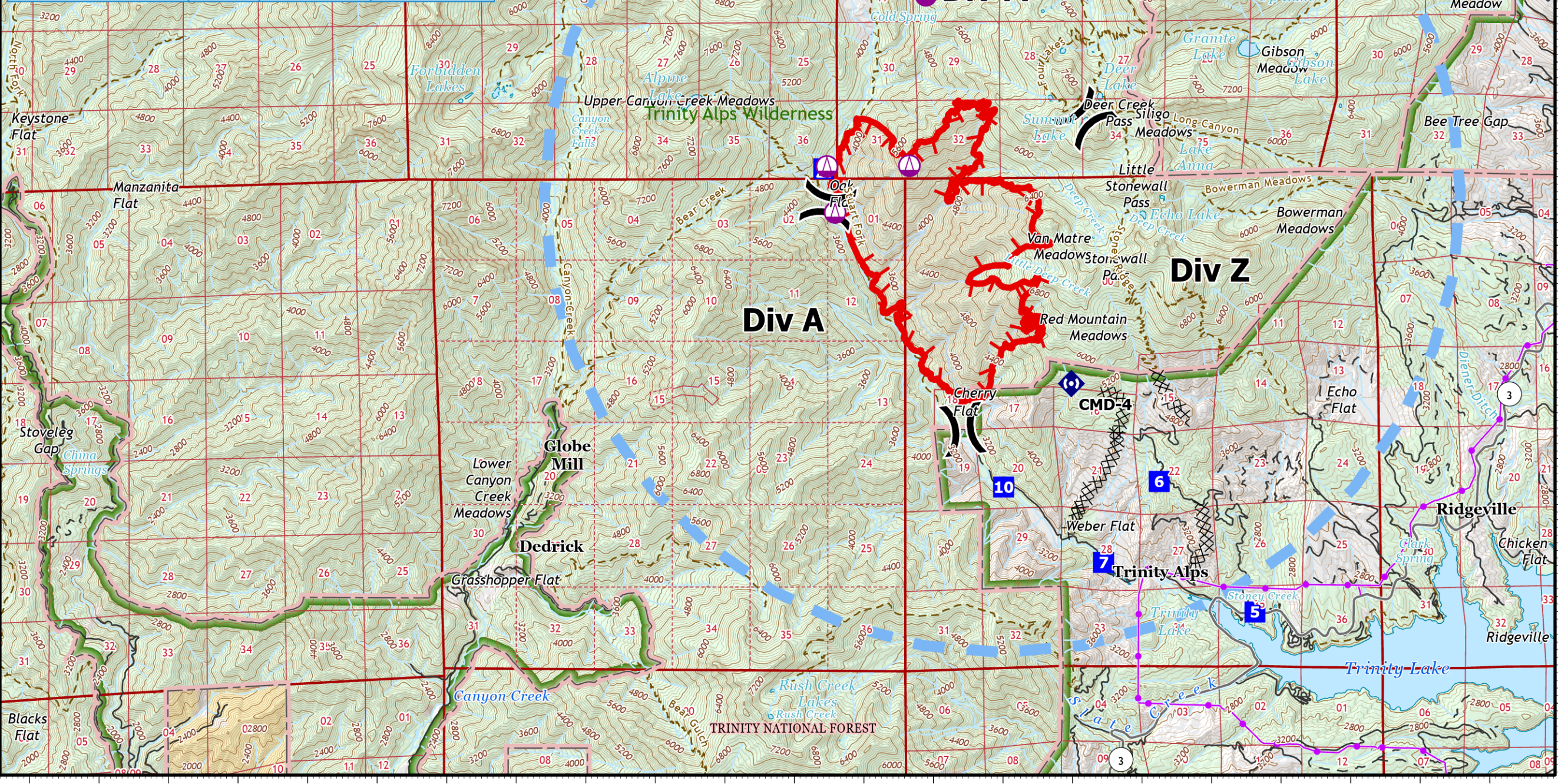
CA-SHF-000973

August 21, 2023

3,662 acres on 8/20 at 16:00

Point Type	Label	Lat WGS84	Long WGS84
Camp		40° 55.847' N	122° 57.574' W
Division Break		40° 55.453' N	122° 57.515' W
Division Break		40° 52.996' N	122° 55.571' W
Division Break		40° 56.396' N	122° 53.816' W
Drop Point	10	40° 52.368' N	122° 54.987' W
Drop Point	5	40° 51.001' N	122° 51.372' W
Drop Point	6	40° 52.427' N	122° 52.749' W
Drop Point	7	40° 51.545' N	122° 53.549' W
Incident Command Post		40° 43.895' N	122° 56.024' W
Repeater	CMD-12	40° 47.788' N	123° 00.286' W
Repeater	CMD-4	40° 53.495' N	122° 54.010' W
Sling Site		40° 57.740' N	122° 56.100' W
Sling Site		40° 55.873' N	122° 57.527' W
Sling Site		40° 55.880' N	122° 56.340' W
Sling Site		40° 55.370' N	122° 57.410' W

- Sling Site
- Division Break
- Drop Point
- Camp
- Repeater
- Completed Dozer Line
- Temporary Flight Restriction
- Transmission Lines
- Surface Management
  - Bureau of Land Management (BLM)
  - Bureau of Reclamation (BOR)
  - State
  - US Forest Service (USFS)
  - Private



1:90,000  
Datum: North American 1983