

Air Ops Map

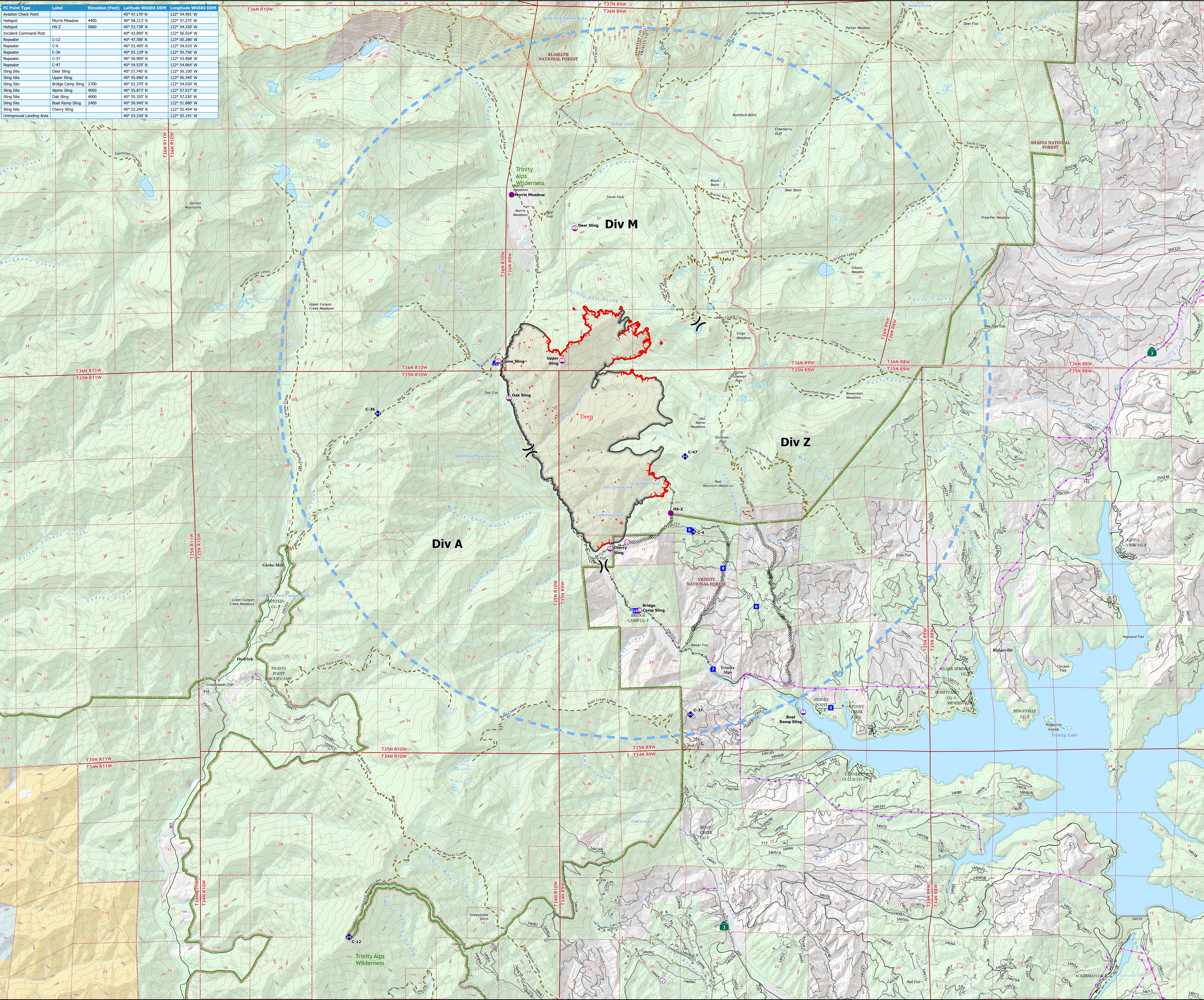
Deep Fire

CA-SHF-000973

August 29, 2023

3,924 acres on 8/28 at 19:44

FC Point Type	Label	Elevation (Feet)	Latitude WGS84 DDM	Longitude WGS84 DDM
Aviation Check Point	Morris Meadow	4400	40° 47.170' N	122° 54.491' W
Helispot	HS-2	5800	40° 53.238' N	122° 56.330' W
Incident Command Post			40° 43.895' N	122° 56.024' W
Repeater	C-12		40° 47.788' N	122° 00.286' W
Repeater	C-4		40° 53.495' N	122° 54.010' W
Repeater	C-36		40° 55.139' N	122° 59.756' W
Repeater	C-37		40° 50.909' N	122° 53.968' W
Repeater	C-47		40° 54.535' N	122° 54.064' W
Sling Site	Deer Sling		40° 57.740' N	122° 56.100' W
Sling Site	Upper Sling		40° 55.880' N	122° 56.340' W
Sling Site	Bridge Camp Sling	2700	40° 52.370' N	122° 54.920' W
Sling Site	Alpine Sling	4000	40° 55.873' N	122° 57.527' W
Sling Site	Oak Sling	4000	40° 55.355' N	122° 51.330' W
Sling Site	Boat Ramp Sling	2400	40° 50.940' N	122° 51.880' W
Sling Site	Cherry Sling		40° 53.240' N	122° 55.454' W
Unimproved Landing Area			40° 53.330' N	122° 55.141' W



- Aviation Check Point
- Helispot
- Sling Site
- Unimproved Landing Area
- ⌋ Division Break
- Drop Point
- Ⓛ Camp
- Ⓛ Repeater
- IR Isolated Heat Source
- ▬ Contained
- ▬ Uncontained
- ⊘ Completed Dozer Line
- ⊘ Completed Hand Line
- ⊘ Completed Road as Line
- ⊘ Temporary Flight Restriction
- Ⓛ Campground
- ▬ Paved Road
- ▬ Gravel Road
- ▬ Dirt Road
- ▬ Unimproved Road
- ▬ Closed Road
- ▬ Trail
- ▬ Transmission Lines
- ▬ Trinity Alps Wilderness
- ▬ Bureau of Land Management (BLM)
- ▬ Bureau of Reclamation (BOR)
- ▬ State
- ▬ US Forest Service (USFS)
- ▬ Private
- ▬ Private

