

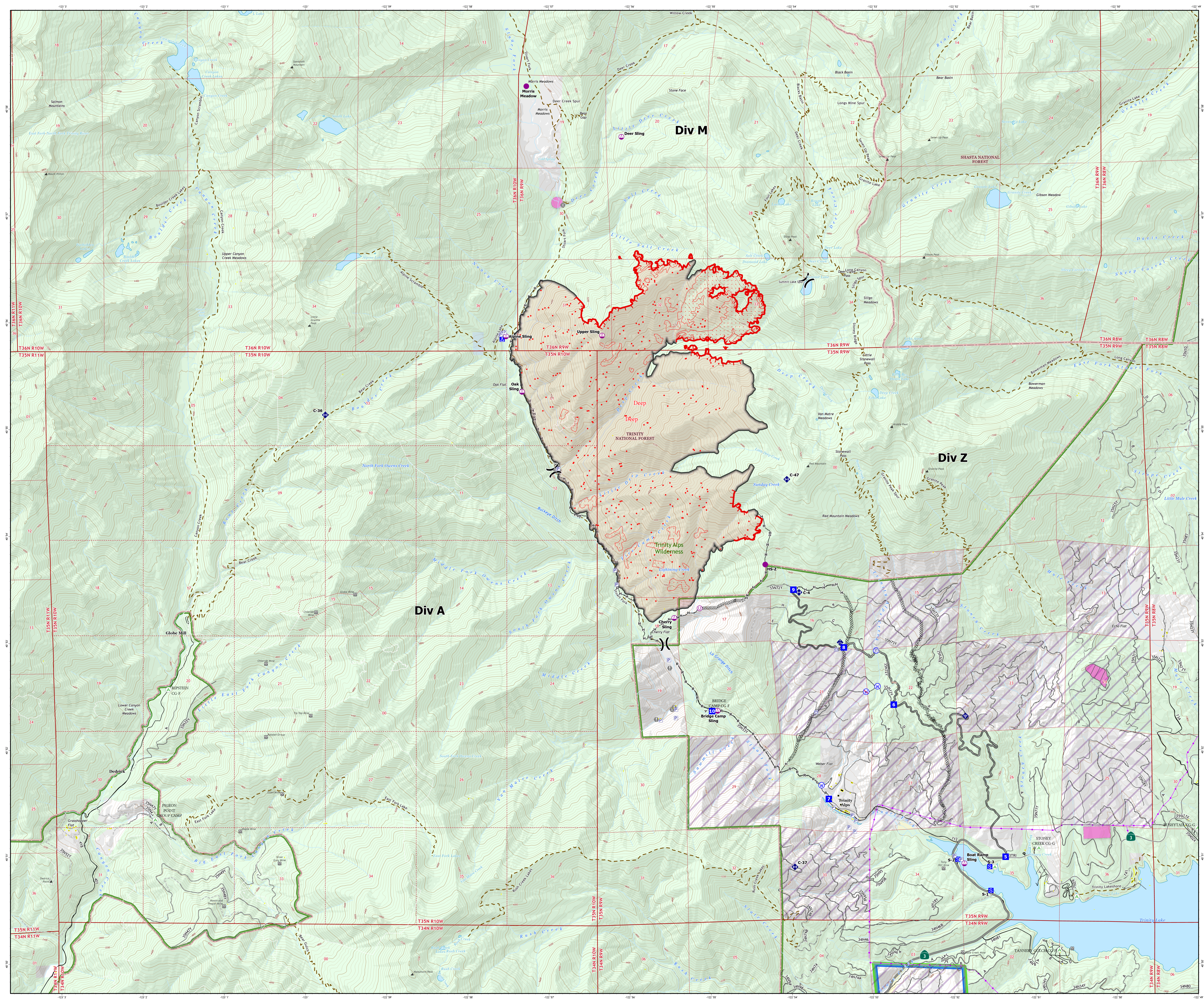
Operations Map

Deep Fire

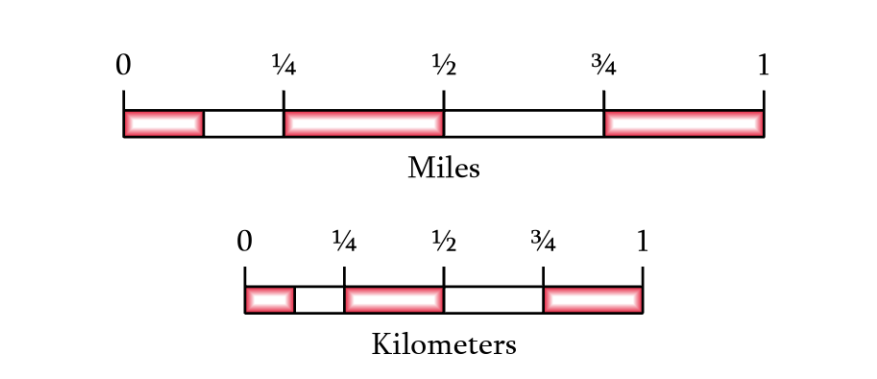
CA-SHF-000973

August 30, 2023

4,114 acres on 8/29 at 23:21



- Helipoint
- Sling Site
- Unimproved Landing Area
- ⌋ Division Break
- Drop Point
- ▲ Camp
- Staging Area
- ⊙ Value at Risk
- ⊙ Bridge
- ⬢ Mobile Weather Unit
- ⬢ Internet Access
- ⬢ Repeater
- ⊙ Water Source
- ⊙ Restricted Water Source
- ⊙ Pump
- ⊙ Water Tank
- IR Isolated Heat Source
- ▨ IR Intense Heat
- ▨ IR Scattered Heat
- Contained
- Uncontained
- ⊘ Completed Dozer Line
- Completed Hand Line
- Completed Road as Line
- Structures
- ▲ Mine
- ▲ Summit
- ▲ Campground
- Paved Road
- Gravel Road
- Dirt Road
- Unimproved Road
- Closed Road
- Sensitive Areas
- Trinity Alps Wilderness
- Direct Protection Areas
- CAL FIRE
- USDA/Forest Service
- Surface Management
- Bureau of Reclamation (BOR)
- State
- US Forest Service (USFS)
- ▨ SPI Lands
- Private



1:19,000
Datum: North American 1983