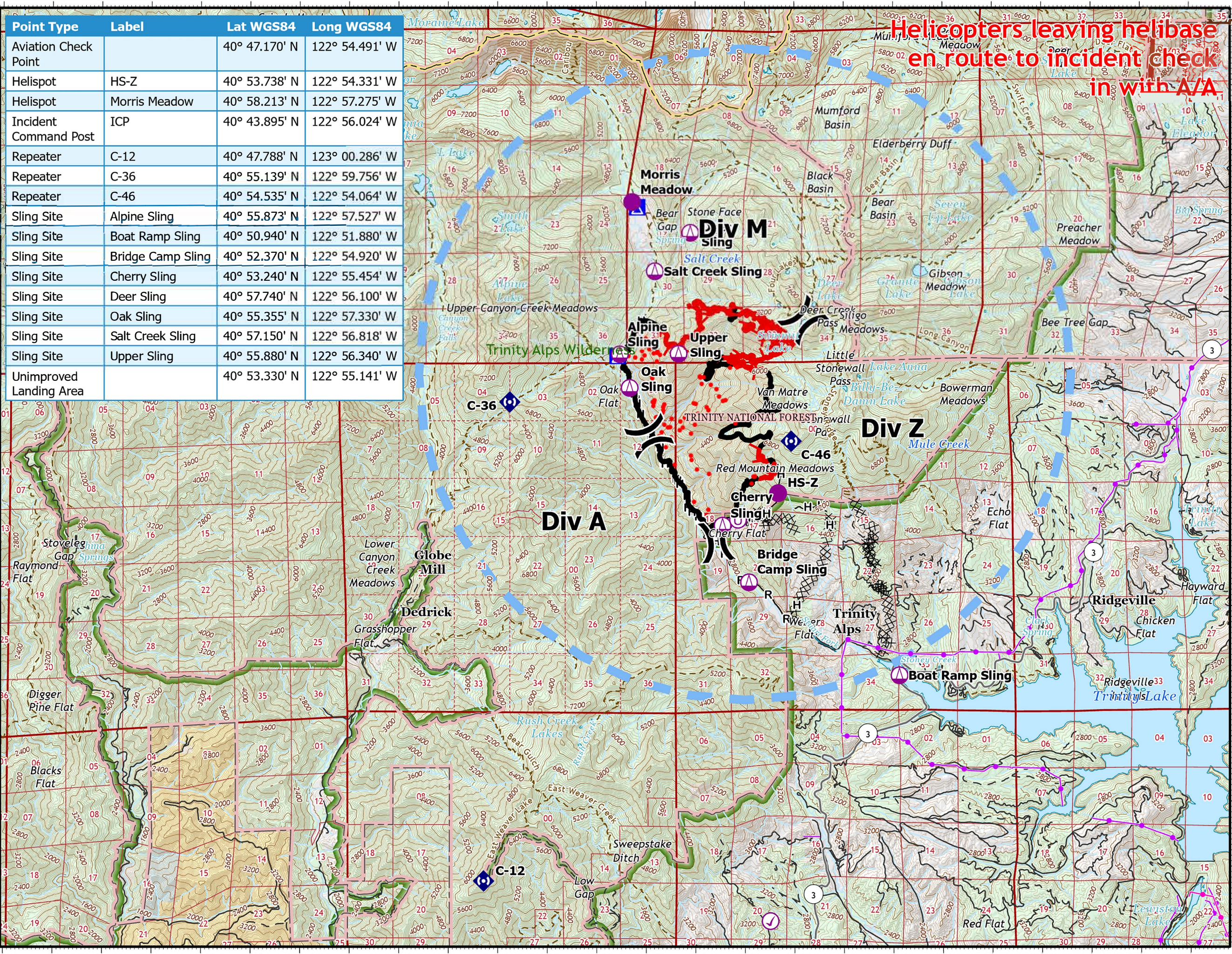


# Pilot Map

Deep Fire  
 CA-SHF-000973  
 September 2, 2023  
 4,186 acres on 8/30 at 23:02

Point Type	Label	Lat WGS84	Long WGS84
Aviation Check Point		40° 47.170' N	122° 54.491' W
Helispot	HS-Z	40° 53.738' N	122° 54.331' W
Helispot	Morris Meadow	40° 58.213' N	122° 57.275' W
Incident Command Post	ICP	40° 43.895' N	122° 56.024' W
Repeater	C-12	40° 47.788' N	123° 00.286' W
Repeater	C-36	40° 55.139' N	122° 59.756' W
Repeater	C-46	40° 54.535' N	122° 54.064' W
Sling Site	Alpine Sling	40° 55.873' N	122° 57.527' W
Sling Site	Boat Ramp Sling	40° 50.940' N	122° 51.880' W
Sling Site	Bridge Camp Sling	40° 52.370' N	122° 54.920' W
Sling Site	Cherry Sling	40° 53.240' N	122° 55.454' W
Sling Site	Deer Sling	40° 57.740' N	122° 56.100' W
Sling Site	Oak Sling	40° 55.355' N	122° 57.330' W
Sling Site	Salt Creek Sling	40° 57.150' N	122° 56.818' W
Sling Site	Upper Sling	40° 55.880' N	122° 56.340' W
Unimproved Landing Area		40° 53.330' N	122° 55.141' W

Helicopters leaving helibase  
 en route to incident check  
 in with A/A



- Aviation Check Point
  - Helispot
  - Sling Site
  - Unimproved Landing Area
  - Division Break
  - Camp
  - Repeater
  - Completed Dozer Line
  - Completed Hand Line
  - Completed Road as Line
  - Temporary Flight Restriction
  - Transmission Lines
  - Surface Management**
  - Bureau of Land Management (BLM)
  - Bureau of Reclamation (BOR)
  - State
  - US Forest Service (USFS)
  - Private
- 0 1/2 1 2 3 4  
Kilometers
- 0 1/2 1 2 3  
Nautical Miles



1:100,000  
 Datum: North American 1983

