

Air Ops Map

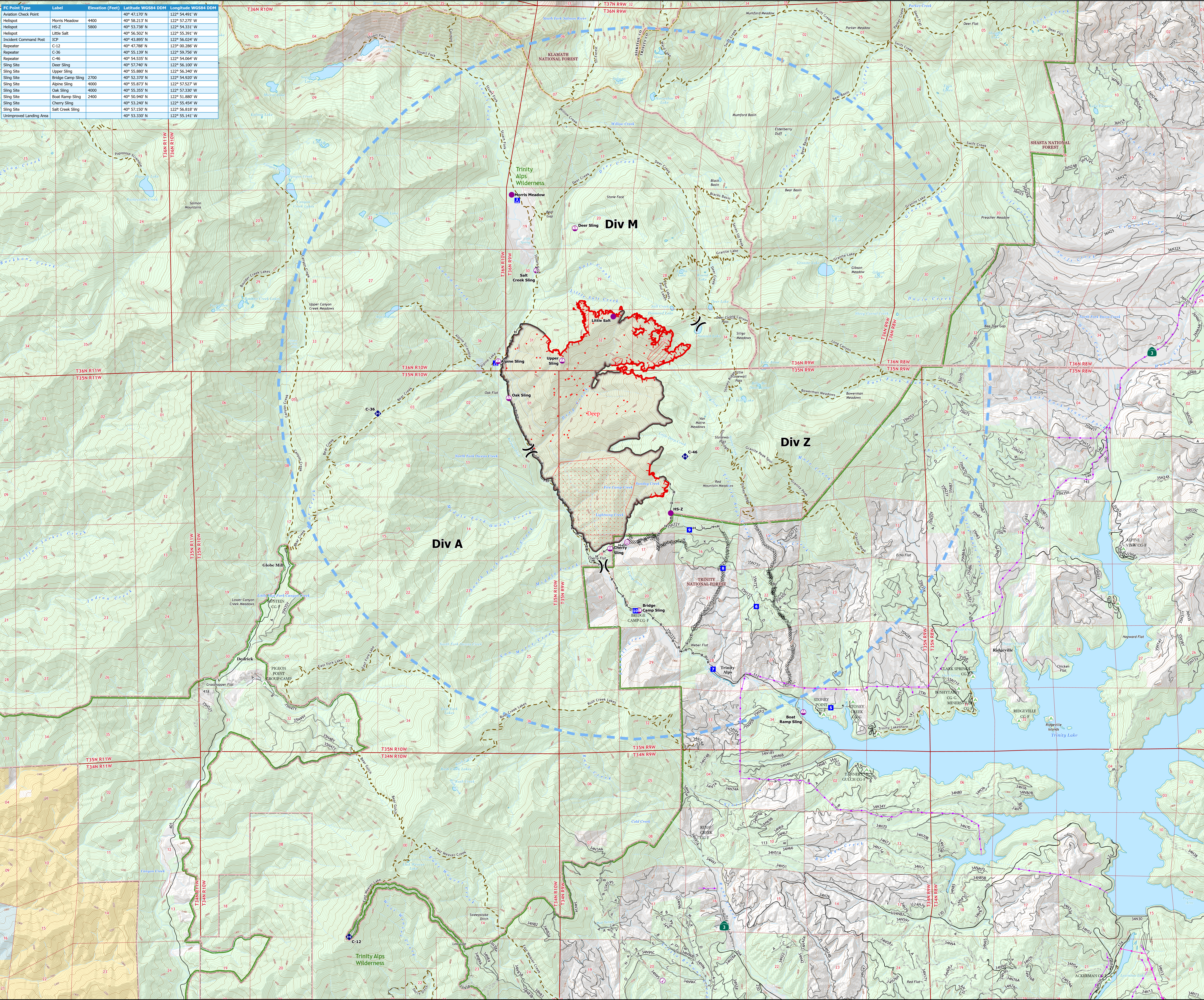
Deep Fire

CA-SHF-000973

September 4, 2023

4,198 acres on 9/4 at 0321Hrs

| FC Point Type | Label | Elevation (Feet) | Latitude WGS84 DDM | Longitude WGS84 DDM |
|-------------------------|-------------------|------------------|--------------------|---------------------|
| Aviation Check Point | Morris Meadow | 4400 | 40° 47.170' N | 122° 54.491' W |
| Helispot | HS-2 | 5800 | 40° 58.217' N | 122° 51.275' W |
| Helispot | HS-2 | 5800 | 40° 53.738' N | 122° 54.331' W |
| Helispot | Little Salt | 4000 | 40° 56.502' N | 122° 55.391' W |
| Incident Command Post | ICP | 4000 | 40° 43.895' N | 122° 56.024' W |
| Repeater | C-12 | 4000 | 40° 47.788' N | 122° 00.286' W |
| Repeater | C-36 | 4000 | 40° 55.139' N | 122° 59.796' W |
| Repeater | C-46 | 4000 | 40° 54.525' N | 122° 54.064' W |
| Sling Site | Deer Sling | 4000 | 40° 57.240' N | 122° 56.100' W |
| Sling Site | Upper Sling | 4000 | 40° 55.880' N | 122° 56.340' W |
| Sling Site | Bridge Camp Sling | 2700 | 40° 52.370' N | 122° 54.920' W |
| Sling Site | Alpine Sling | 4000 | 40° 55.873' N | 122° 57.527' W |
| Sling Site | Oak Sling | 4000 | 40° 55.355' N | 122° 57.330' W |
| Sling Site | Boat Ramp Sling | 2400 | 40° 50.940' N | 122° 51.880' W |
| Sling Site | Cherry Sling | 4000 | 40° 53.240' N | 122° 55.454' W |
| Sling Site | Salt Creek Sling | 4000 | 40° 57.150' N | 122° 56.818' W |
| Unimproved Landing Area | Salt Creek Sling | 4000 | 40° 53.330' N | 122° 55.141' W |



- Aviation Check Point
- Helispot
- Sling Site
- Unimproved Landing Area
-) Division Break
- Drop Point
- Camp
- ◆ Repeater
- IR Isolated Heat Source
- ▬ Contained
- ▬ Uncontained
- ▬ Completed Dozer Line
- ▬ Completed Hand Line
- ▬ Completed Road as Line
- ▬ Temporary Flight Restriction
- ▬ IR Heat Perimeter
- ▬ IR Intense Heat
- ▬ IR Scattered Heat
- ▲ Campground
- ▬ Paved Road
- ▬ Gravel Road
- ▬ Dirt Road
- ▬ Unimproved Road
- ▬ Closed Road
- ▬ Trail
- ▬ Transmission Lines
- ▬ Trinity Alps Wilderness
- ▬ Bureau of Land Management (BLM)
- ▬ Bureau of Reclamation (BOR)
- ▬ State
- ▬ US Forest Service (USFS)
- ▬ Private
- ▬ Private

