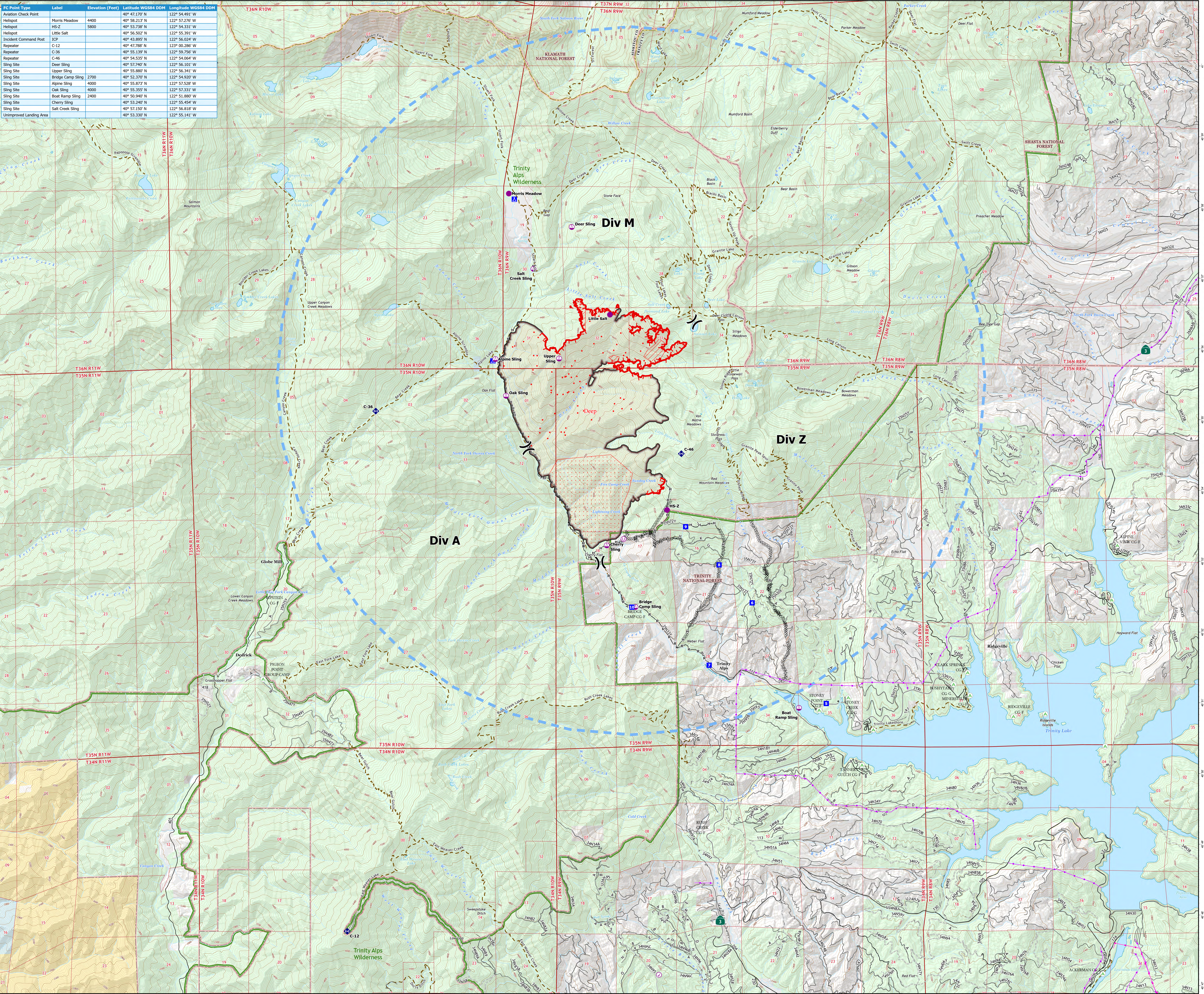
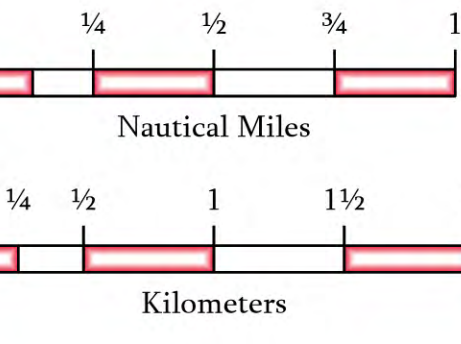


FC Point Type	Label	Elevation (Feet)	Latitude WGS84 DDM	Longitude WGS84 DDM
Aviation Check Point	Morris Meadow	4400	40° 47.170' N	122° 54.491' W
Helispot	HS-2	5800	40° 58.217' N	122° 51.276' W
Helispot	HS-2	5800	40° 53.238' N	122° 54.331' W
Helispot	Little Salt	4000	40° 56.502' N	122° 55.391' W
Incident Command Post	ICP	4000	40° 43.895' N	122° 56.024' W
Repeater	C-12	4000	40° 47.788' N	122° 00.286' W
Repeater	C-36	4000	40° 55.139' N	122° 59.796' W
Repeater	C-46	4000	40° 54.525' N	122° 54.064' W
Sling Site	Deer Sling	4000	40° 57.240' N	122° 56.101' W
Sling Site	Upper Sling	4000	40° 55.880' N	122° 56.341' W
Sling Site	Bridge Camp Sling	2700	40° 52.370' N	122° 54.920' W
Sling Site	Alpine Sling	4000	40° 55.873' N	122° 57.528' W
Sling Site	Oak Sling	4000	40° 55.355' N	122° 57.331' W
Sling Site	Boat Ramp Sling	2400	40° 50.940' N	122° 51.880' W
Sling Site	Cherry Sling	4000	40° 53.240' N	122° 55.454' W
Sling Site	Salt Creek Sling	4000	40° 53.150' N	122° 56.818' W
Unimproved Landing Area	Salt Creek Sling	4000	40° 53.330' N	122° 55.141' W



- Aviation Check Point
- Helispot
- Sling Site
- Unimproved Landing Area
- Division Break
- Drop Point
- Camp
- Repeater
- IR Isolated Heat Source
- Contained
- Uncontained
- Completed Dozer Line
- Completed Hand Line
- Completed Road as Line
- Temporary Flight Restriction
- IR Heat Perimeter
- IR Intense Heat
- IR Scattered Heat
- Campground
- Paved Road
- Gravel Road
- Dirt Road
- Unimproved Road
- Closed Road
- Trail
- Transmission Lines
- Trinity Alps Wilderness
- Bureau of Land Management (BLM)
- Bureau of Reclamation (BOR)
- State
- US Forest Service (USFS)
- Private
- Private



1:29,000
Datum: North American 1983