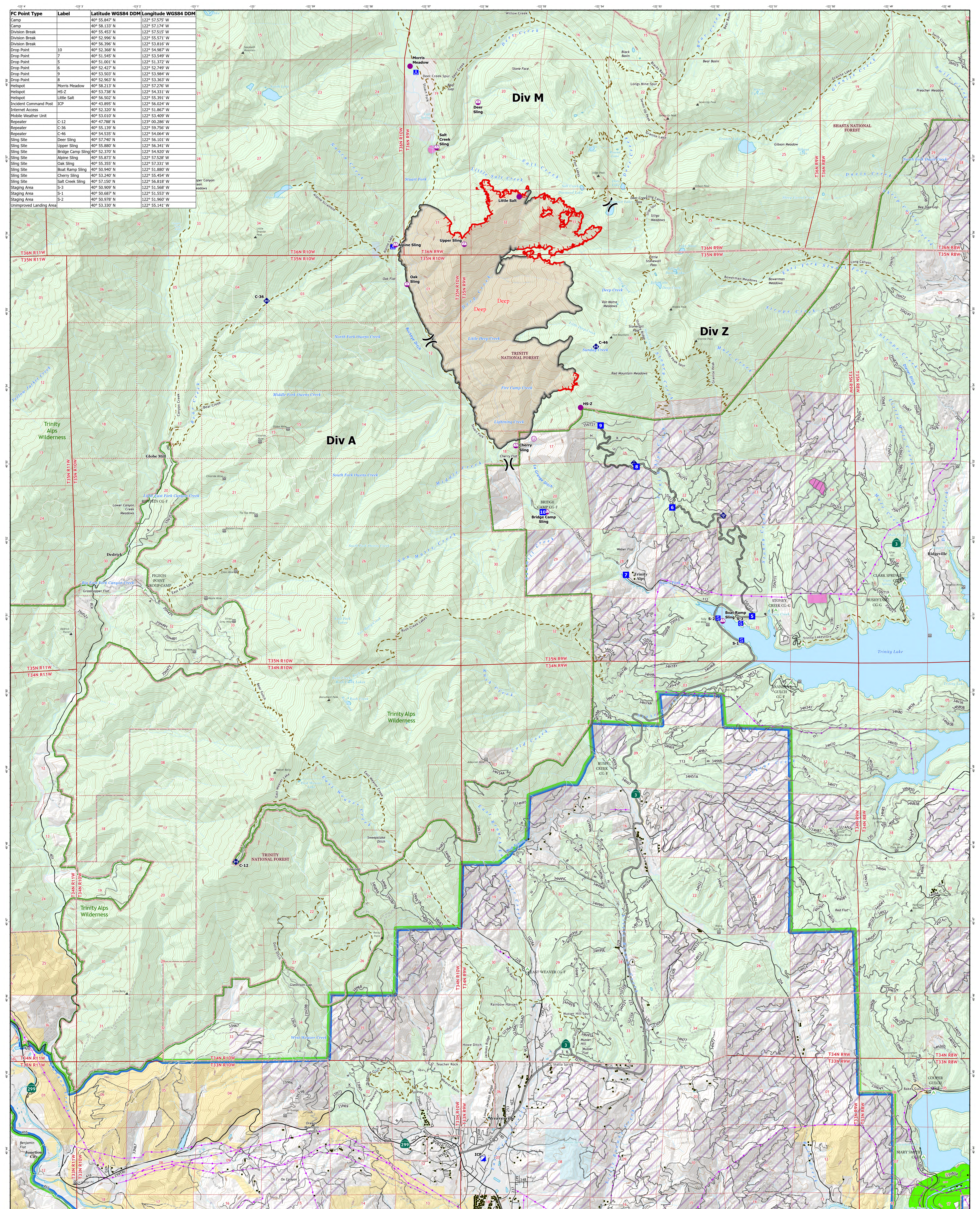
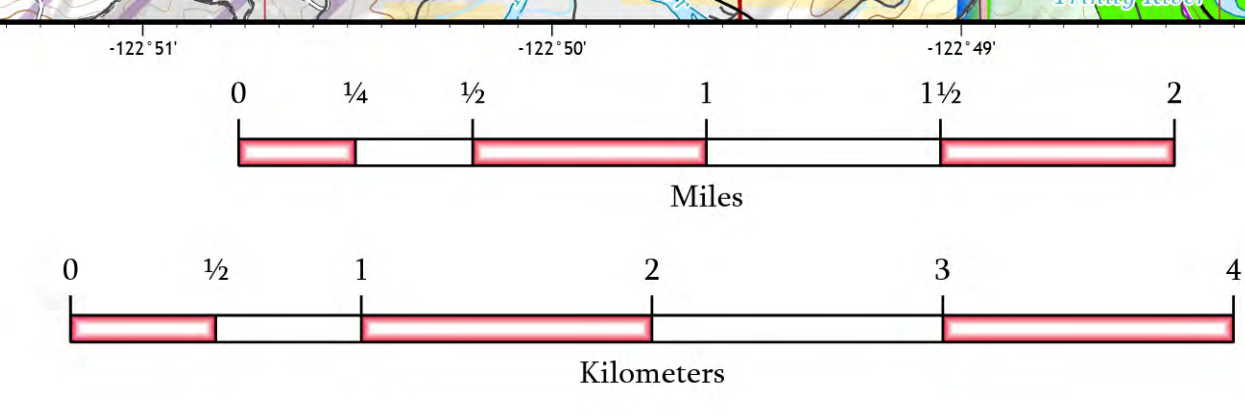


FC Point Type	Label	Latitude WGS84 DDM	Longitude WGS84 DDM
Camp		40° 55.847' N	122° 57.575' W
Camp		40° 56.137' N	122° 57.174' W
Division Break		40° 55.453' N	122° 57.515' W
Division Break		40° 52.996' N	122° 55.571' W
Division Break		40° 56.396' N	122° 53.816' W
Drop Point	10	40° 52.368' N	122° 54.987' W
Drop Point	7	40° 51.545' N	122° 53.549' W
Drop Point	5	40° 51.001' N	122° 51.372' W
Drop Point	6	40° 52.427' N	122° 52.749' W
Drop Point	9	40° 53.503' N	122° 53.984' W
Drop Point	8	40° 52.963' N	122° 53.362' W
Helispot	Morris Meadow	40° 58.213' N	122° 52.276' W
Helispot	HS-2	40° 53.738' N	122° 54.331' W
Helispot	Little Salt	40° 56.502' N	122° 55.391' W
Incident Command Post	ICP	40° 43.895' N	122° 56.024' W
Internet Access		40° 52.220' N	122° 51.867' W
Mobile Weather Unit		40° 53.010' N	122° 53.409' W
Repeater	C-12	40° 47.788' N	123° 00.286' W
Repeater	C-36	40° 55.139' N	122° 59.756' W
Repeater	C-46	40° 54.535' N	122° 54.064' W
Sling Site	Deer Sling	40° 57.740' N	122° 56.101' W
Sling Site	Upper Sling	40° 55.880' N	122° 56.341' W
Sling Site	Bridge Camp Sling	40° 52.370' N	122° 54.920' W
Sling Site	Alpine Sling	40° 55.873' N	122° 55.228' W
Sling Site	Oak Sling	40° 55.355' N	122° 57.331' W
Sling Site	Boat Ramp Sling	40° 50.940' N	122° 51.880' W
Sling Site	Cherry Sling	40° 53.240' N	122° 55.454' W
Sling Site	Salt Creek Sling	40° 51.150' N	122° 53.816' W
Staging Area	S-3	40° 50.909' N	122° 51.568' W
Staging Area	S-1	40° 50.687' N	122° 51.553' W
Staging Area	S-2	40° 50.978' N	122° 51.960' W
Unimproved Landing Area		40° 53.330' N	122° 55.141' W



**Communications**  
 Deep  
 CA-SHF-000937  
 Sept 4th 2023

- Helispot
- Ⓐ Sling Site
- ⓪ Unimproved Landing Area
- Ⓜ Division Break
- Ⓜ Incident Command Post
- Drop Point
- Ⓜ Camp
- Ⓜ Staging Area
- Ⓜ Mobile Weather Unit
- Ⓜ Internet Access
- Ⓜ Repeater
- Ⓜ Contained
- Ⓜ Uncontained



1:26,000

Datum: North American 1983

