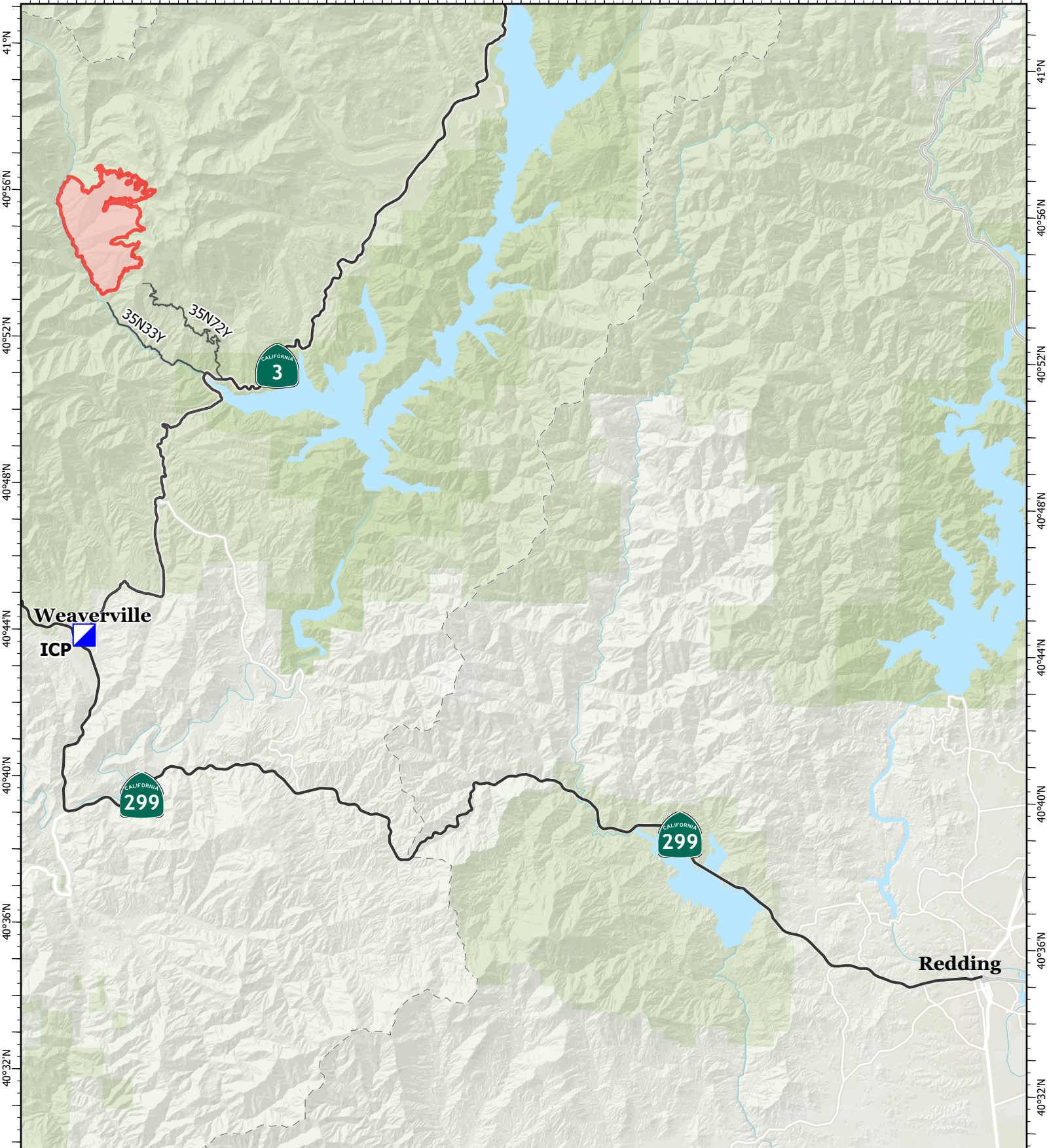




122°56'W 122°52'W 122°48'W 122°44'W 122°40'W 122°36.01'W 122°32'W 122°28'W 122°24'W

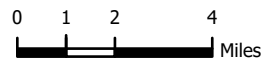


Transportation Map

Deep
CA-SHF-000973
September 5, 2023

4198 acres at 9/4/23 0321

-  Incident Command Post
-  Fire Perimeter



1:250,000 | mfurumi | 9/4/2023 1831
Acres from IR and GPS
NAD 1983 2011 Datum, LatLong Grid

