

Air Ops Map

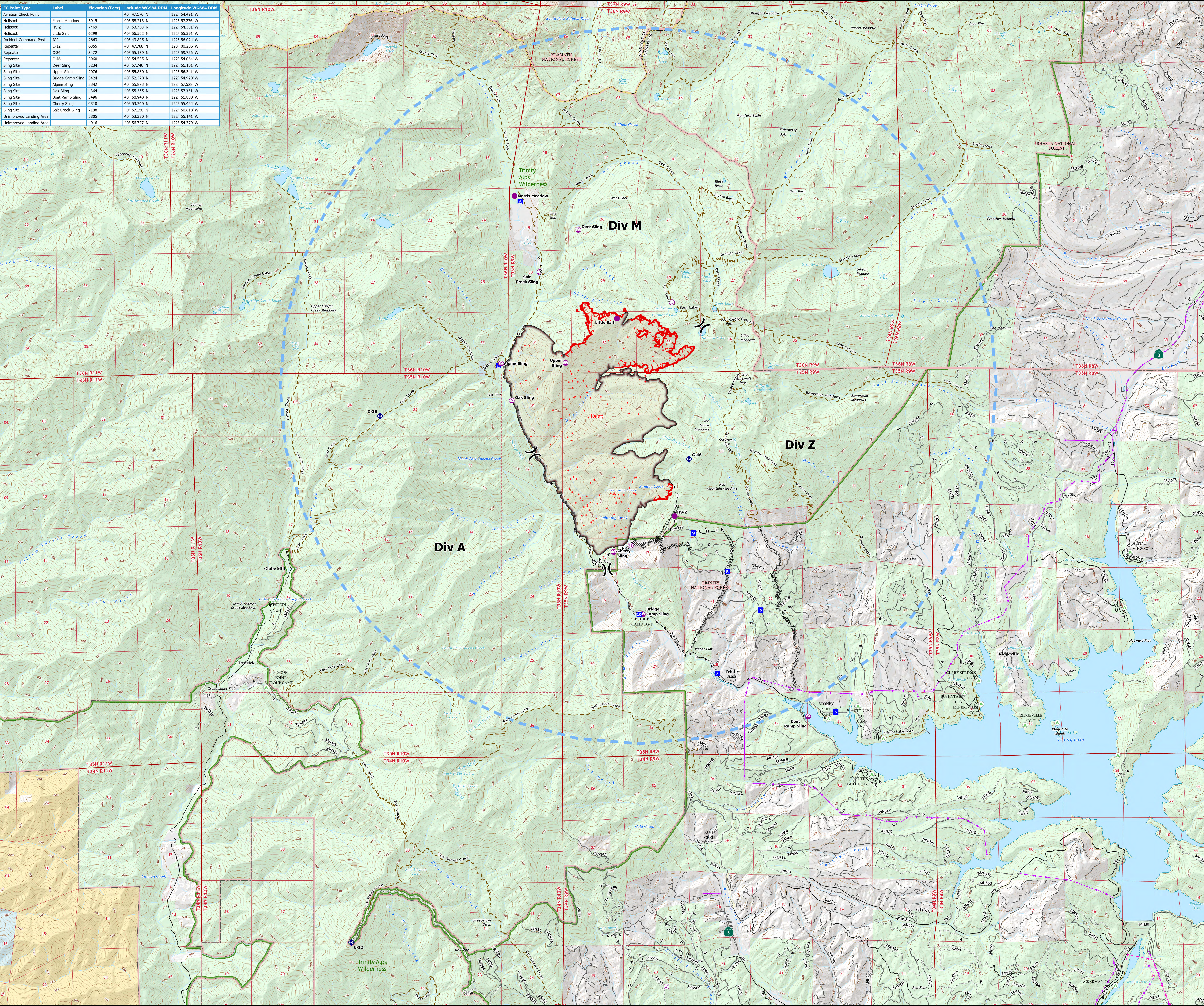
Deep Fire

CA-SHF-000973

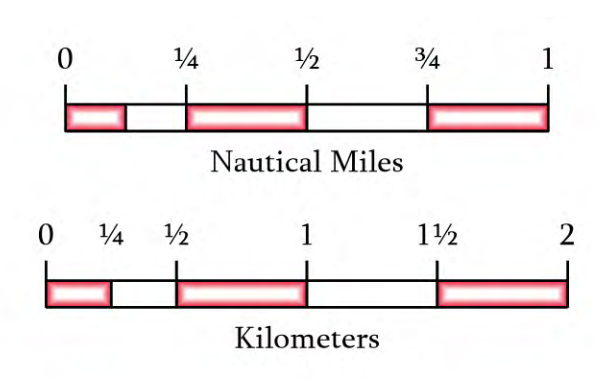
September 6, 2023

4,198 acres on 9/4 at 0321Hrs

FC Point Type	Label	Elevation (Feet)	Latitude WGS84 DDM	Longitude WGS84 DDM
Aviation Check Point	Morris Meadow	3915	40° 47.170' N	122° 54.491' W
Helipoint	HS-2	7469	40° 53.238' N	122° 54.331' W
Helipoint	HS-2	7469	40° 53.238' N	122° 54.331' W
Helipoint	Little Salt	6299	40° 56.502' N	122° 55.391' W
Incident Command Post	ICP	2663	40° 43.895' N	122° 56.024' W
Repeater	C-12	6355	40° 47.788' N	122° 00.286' W
Repeater	C-36	3472	40° 55.139' N	122° 59.796' W
Repeater	C-46	2960	40° 54.525' N	122° 54.064' W
Sling Site	Deer Sling	5234	40° 57.240' N	122° 56.101' W
Sling Site	Upper Sling	2076	40° 55.880' N	122° 56.341' W
Sling Site	Bridge Camp Sling	3424	40° 52.370' N	122° 54.920' W
Sling Site	Alpine Sling	2342	40° 55.873' N	122° 57.528' W
Sling Site	Oak Sling	4364	40° 55.355' N	122° 57.331' W
Sling Site	Boat Ramp Sling	2406	40° 50.940' N	122° 51.880' W
Sling Site	Cherry Sling	4310	40° 53.240' N	122° 55.454' W
Sling Site	Salt Creek Sling	7198	40° 57.150' N	122° 56.818' W
Unimproved Landing Area		5805	40° 53.330' N	122° 55.141' W
Unimproved Landing Area		4916	40° 56.727' N	122° 54.379' W



- Aviation Check Point
- Helipoint
- Sling Site
- Unimproved Landing Area
-) Division Break
- Drop Point
- Camp
- ◆ Repeater
- IR Isolated Heat Source
- ▬ Contained
- ▬ Uncontained
- ▬ Completed Dozer Line
- ▬ Completed Hand Line
- ▬ Completed Road as Line
- ▬ Temporary Flight Restriction
- ▬ IR Heat Perimeter
- ▬ IR Intense Heat
- ▲ Campground
- ▬ Paved Road
- ▬ Gravel Road
- ▬ Dirt Road
- ▬ Unimproved Road
- ▬ Closed Road
- ▬ Trail
- ▬ Transmission Lines
- ▬ Trinity Alps Wilderness
- ▬ Bureau of Land Management (BLM)
- ▬ Bureau of Reclamation (BOR)
- ▬ State
- ▬ US Forest Service (USFS)
- ▬ Private
- ▬ Private



1:29,000
Datum: North American 1983