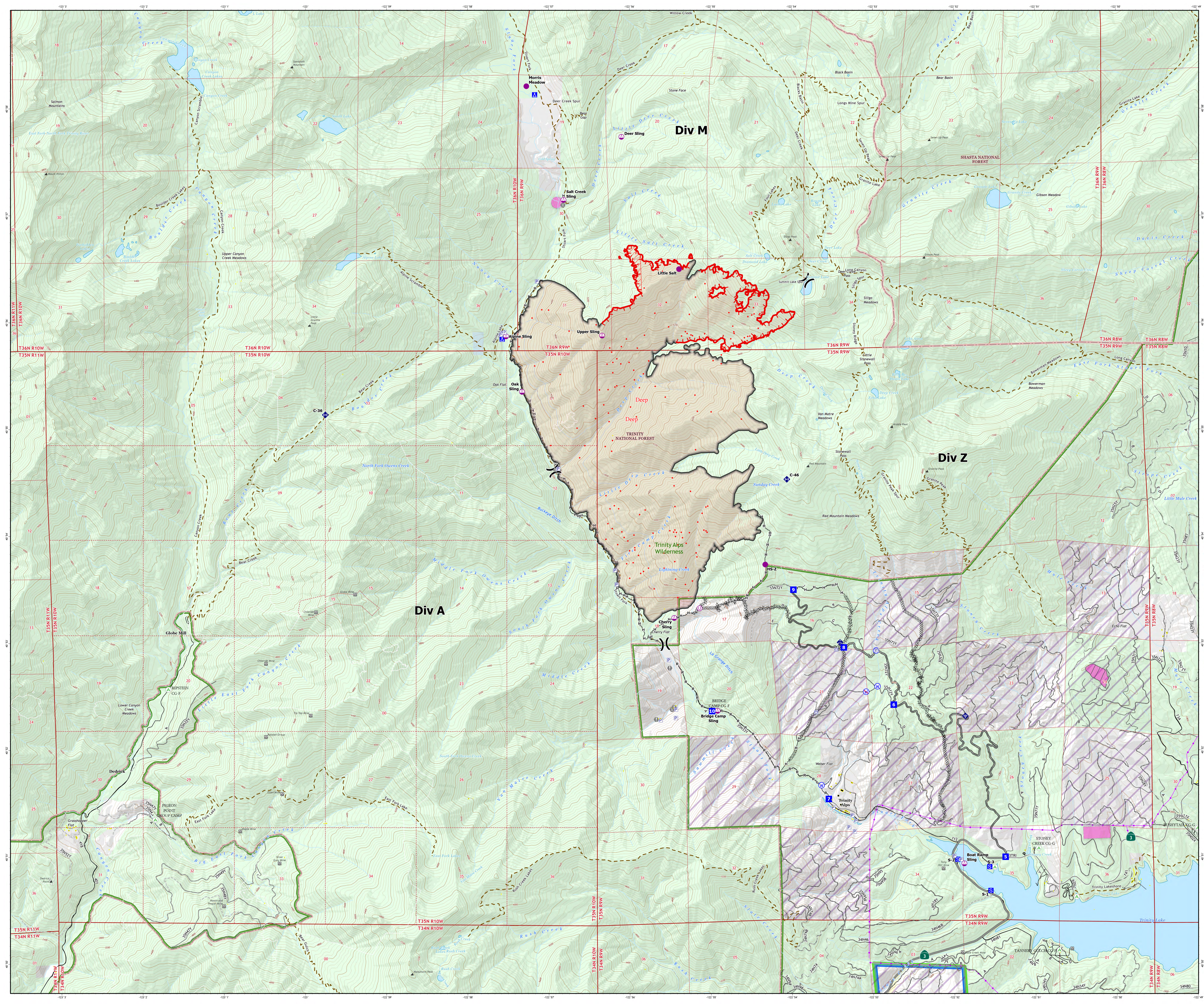
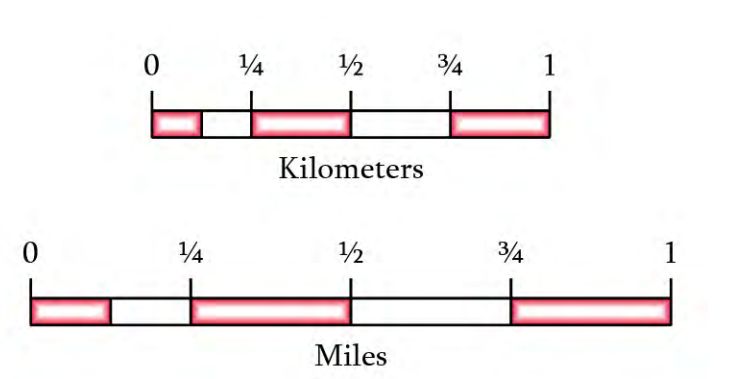


Operations Map

Deep Fire
CA-SHF-000973
September 7, 2023
4,198 acres on 9/4 at 0321Hrs



- Helipoint
- Sling Site
- Unimproved Landing Area
- ⎓ Division Break
- Drop Point
- ▲ Camp
- Staging Area
- Value at Risk
- Bridge
- ◆ Mobile Weather Unit
- ◆ Internet Access
- ◆ Repeater
- Ⓜ Water Source
- Ⓜ Restricted Water Source
- Ⓜ Pump
- Ⓜ Water Tank
- IR Isolated Heat Source
- ▨ IR Intense Heat
- ▬ Contained
- ▬ Uncontained
- ⎓ Completed Dozer Line
- ⎓ Completed Hand Line
- ⎓ Completed Road as Line
- Structures
- Mine
- ▲ Summit
- ▲ Campground
- ▬ Paved Road
- ▬ Gravel Road
- ▬ Dirt Road
- ▬ Unimproved Road
- ▬ Closed Road
- Sensitive Areas
- Trinity Alps Wilderness
- Direct Protection Areas
- CAL FIRE
- USDA/Forest Service
- Surface Management
- Bureau of Reclamation (BOR)
- State
- US Forest Service (USFS)
- SPI Lands
- Private



1:19,000
Datum: North American 1983