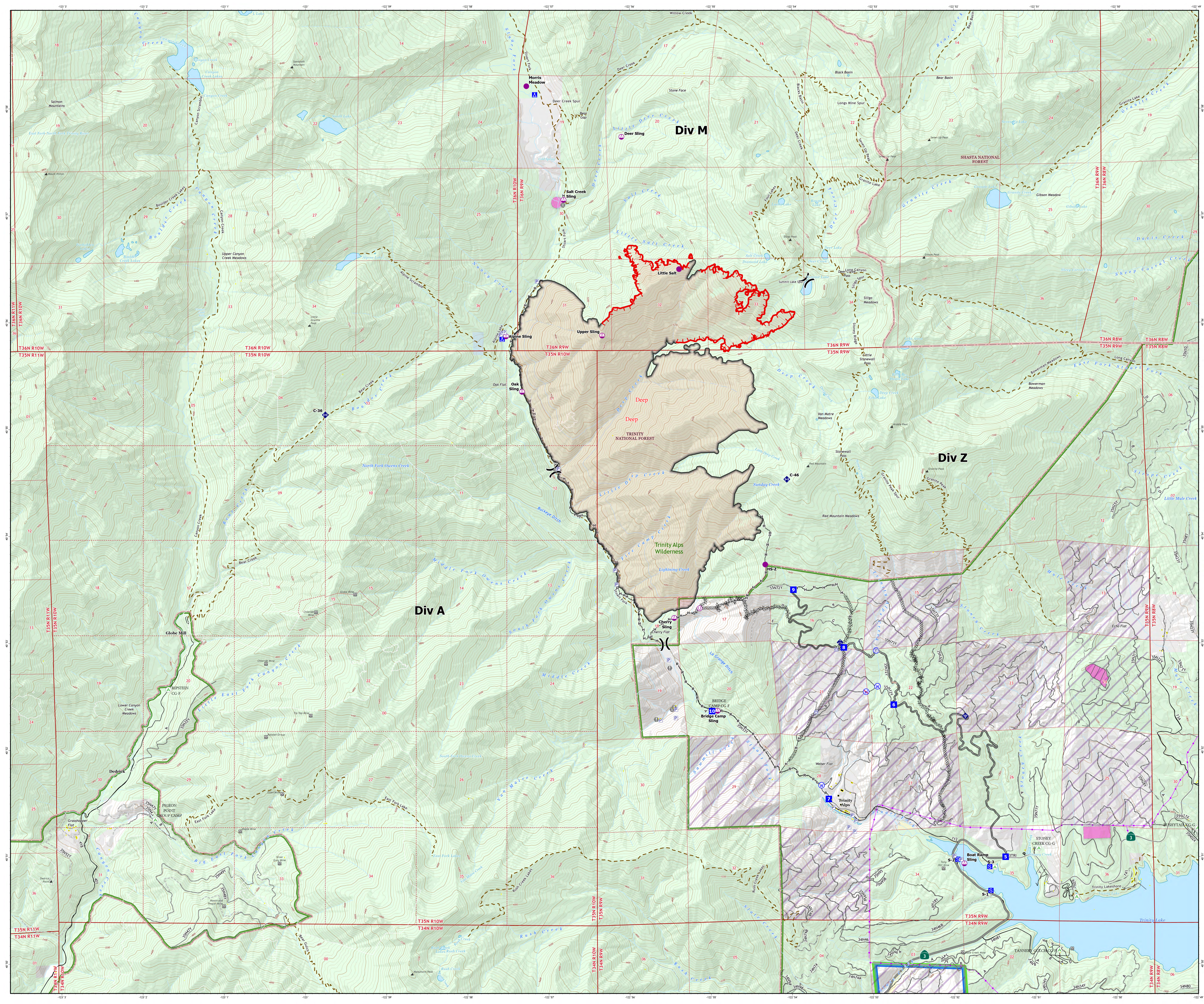
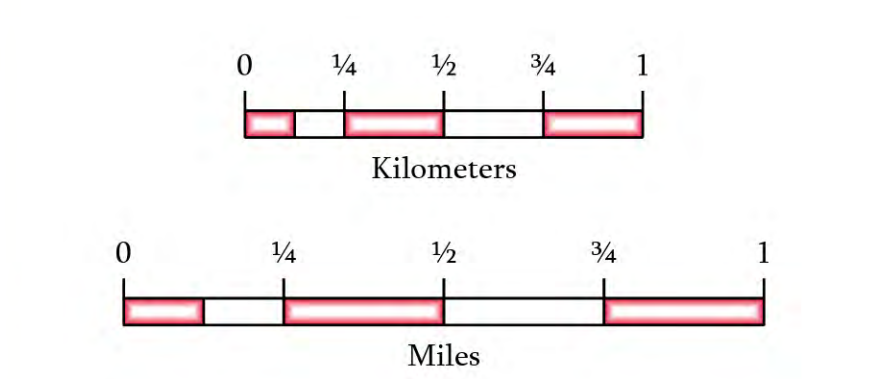


# Operations Map

Deep Fire  
CA-SHF-000973  
September 8, 2023  
4,198 acres on 9/4 at 0321Hrs



- Helipad
- Sling Site
- Unimproved Landing Area
- ⌋ Division Break
- Drop Point
- ▲ Camp
- Staging Area
- ⊕ Value at Risk
- ⊕ Bridge
- ⊕ Mobile Weather Unit
- ⊕ Internet Access
- ⊕ Repeater
- ⊕ Water Source
- ⊕ Restricted Water Source
- ⊕ Pump
- ⊕ Water Tank
- ⊕ Contained
- ⊕ Uncontained
- ⊕ Completed Dozer Line
- ⊕ Completed Hand Line
- ⊕ Completed Road as Line
- Structures
- ▲ Mine
- ▲ Summit
- ▲ Campground
- Paved Road
- Gravel Road
- Dirt Road
- Unimproved Road
- Closed Road
- Sensitive Areas
- Trinity Alps Wilderness
- Direct Protection Areas
- CAL FIRE
- USDA/Forest Service
- Surface Management
  - Bureau of Reclamation (BOR)
  - State
  - US Forest Service (USFS)
  - SPI Lands
  - Private



1:19,000  
Datum: North American 1983