

Pilot Map

Deep Fire

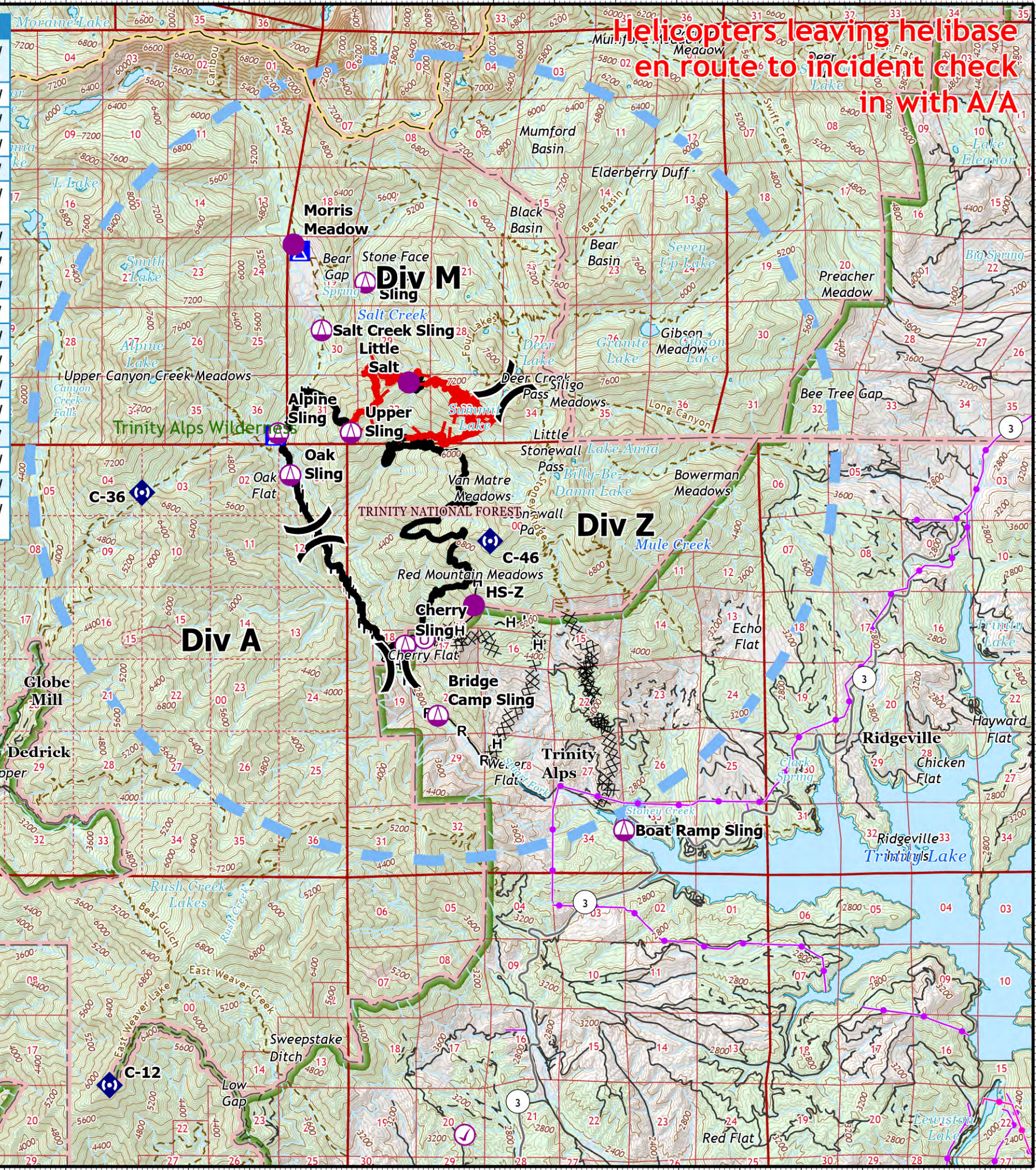
CA-SHF-000973

September 8, 2023

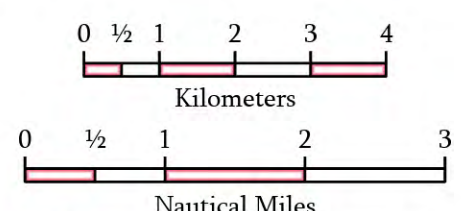
4,198 acres on 9/4 at 0321Hrs

Point Type	Label	Lat WGS84	Long WGS84
Aviation Check Point		40° 47.170' N	122° 54.491' W
Helibase		40° 44.846' N	122° 55.311' W
Helispot	HS-Z	40° 53.738' N	122° 54.331' W
Helispot	Little Salt	40° 56.502' N	122° 55.391' W
Helispot	Morris Meadow	40° 58.213' N	122° 57.276' W
Incident Command Post	ICP	40° 43.895' N	122° 56.024' W
Repeater	C-12	40° 47.788' N	123° 00.286' W
Repeater	C-36	40° 55.139' N	122° 59.756' W
Repeater	C-46	40° 54.535' N	122° 54.064' W
Sling Site	Alpine Sling	40° 55.873' N	122° 57.528' W
Sling Site	Boat Ramp Sling	40° 50.940' N	122° 51.880' W
Sling Site	Bridge Camp Sling	40° 52.370' N	122° 54.920' W
Sling Site	Cherry Sling	40° 53.240' N	122° 55.454' W
Sling Site	Deer Sling	40° 57.740' N	122° 56.101' W
Sling Site	Oak Sling	40° 55.355' N	122° 57.331' W
Sling Site	Salt Creek Sling	40° 57.150' N	122° 56.818' W
Sling Site	Upper Sling	40° 55.880' N	122° 56.341' W
Unimproved Landing Area		40° 53.330' N	122° 55.141' W

Helicopters leaving helibase
en route to incident check
in with A/A



- Aviation Check Point
- Helispot
- Sling Site
- Unimproved Landing Area
- Division Break
- Camp
- Repeater
- Completed Dozer Line
- Completed Hand Line
- Completed Road as Line
- Temporary Flight Restriction
- Transmission Lines
- Surface Management**
- Bureau of Land Management (BLM)
- Bureau of Reclamation (BOR)
- State
- US Forest Service (USFS)
- Private



1:100,000
Datum: North American 1983