

**Management Action Point #1**  
Location: Along Stuart Creek Trail from Oak Flat on the north to trailhead on the south.

Action: Evaluate and initiate operations along Alternative line as the primary control line. Alternative #1 is the Rush Creek Trail (East to West) from ridge west of Trinity Lake and Trinity Alps Resort.

Action: Evaluate operational actions for the Alternative north-south ridgeline running from East Fork Lake to Alpine Lake.

Action: Evaluate and initiate prep work on Contingency line from Pidgeon Point Group Camp north along Canyon Creek.

Recommended Resources/Logistical Concerns: Due to complex and steep terrain, Type1/Type 2 IA crews, FEMP/FEMT/REMS should be considered. Logistical needs/concerns for this MAP will require special communications network, support for resources, and medical and safety considerations.

More detailed needs are identified by Sections in the Appendix A.

**Management Action Point #2**

Location: Fire crosses handline from Cherry Flat along ridge to Section 17. North along wilderness boundary to fire's edge at Red Mountain Meadows. Depending on Intensity and location of fire crossing MAP.

Action: Utilize constructed dozer line heading south in DIV Z from wilderness boundary in Section 16, 21, 28 as control line. Continue south on Stuart Creek road to keep fire east of road.

Action: Initiate opening up secondary dozer line heading south in DIV Z from wilderness boundary in Sections 15, 22, 27 as control lines. Continue south on Stuart Creek Road to Trinity Lake.

Action: Refer to Trinity Alps Resort structure protection plans, initiate as needed. Initiate Van Matre in holdings protection plan.

Action: Make notification to Forest, CALFIRE, Sheriffs, Sierra Pacific Industries. Potential Evacuation notices for Sheriff's Dept. for areas TRC 147, 148, 149 and 150.

Recommended Resources: Resources identified in Trinity Alps Resort Structure Plan, T1/T2 IA crew for possible defensive firing.

**Management Action Point #3**

Location: From Wilderness boundary northward along Stoney Ridge to Siligo Meadows and follow Deer Creek to the north.

Action: Initiate actions on the Contingency lines from Siligo Meadows to the east, following Long Canyon Creek. Notifications to Forest, CALFIRE, Sheriff, Sierra Pacific Industries, Trinity Center VFD, Coffee Creek VFD. Depending on fire behavior and location of crossing MAP 3, the following Evacuation area could be implemented by Sheriff Dept. TRC 131, 132, 133, 139 and 140.

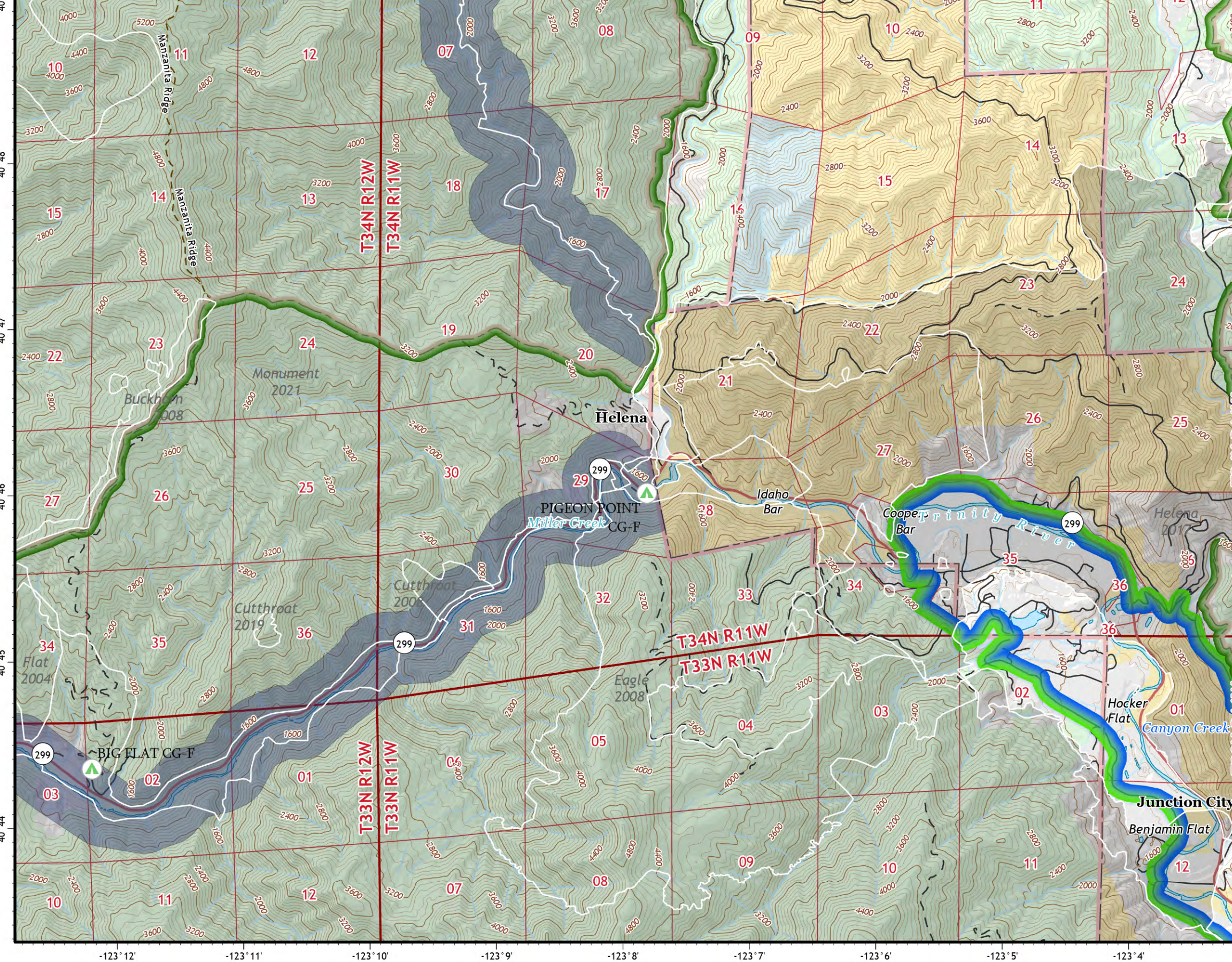
Action: Assess needs for structure protection in the Long Canyon and Lake Forest areas.

Recommended Resources: Due to numerous structures located east of fire in the Trinity Lake area, additional Water Tenders, Water Storage units will be needed along with Structure Protection resources.

**Management Action Point #4**

Location: Fire crosses Salt Creek/Little Salt Creek  
Action Contact Forest, Corral Creek Timber Co., owner of Morris Meadows. Perimeter control lines to fall back to Deer Creek to the north.

Action: Evaluate the potential of utilizing Deer Creek with the current fire behavior, time of season, and resource availability.



- Primary
- Alternate
- Contingency
- Emergency

- Aviation Check Point
- Helispot
- Helibase
- Sling Site
- Unimproved Landing Area

- Division Break
- Incident Command Post
- Drop Point
- Camp
- Staging Area

- Hot Spot - Spot Fire
- Value at Risk
- Other
- Gate
- Bridge
- Stream Crossing
- Road Repair
- Repair Point
- Hazard Tree
- Dozer Push
- Culvert

- Mobile Weather Unit
- Internet Access
- Repeater
- Water Source
- Restricted Water Source

- Contained
- Uncontained
- Completed Dozer Line
- Completed Hand Line
- Completed Road as Line
- Campground
- Secondary Hwy
- Local Connector
- Local Road
- 4WD
- Trail

- California Fire Perimeters (2003 to present)
- Trinity Alps Wilderness
- Direct Protection Areas
- CAL FIRE
- USDA/Forest Service

- Surface Management
- Bureau of Land Management (BLM)
- Bureau of Reclamation (BOR)
- State
- US Forest Service (USFS)
- Private

