

Briefing

Pearch and Let er-Buck

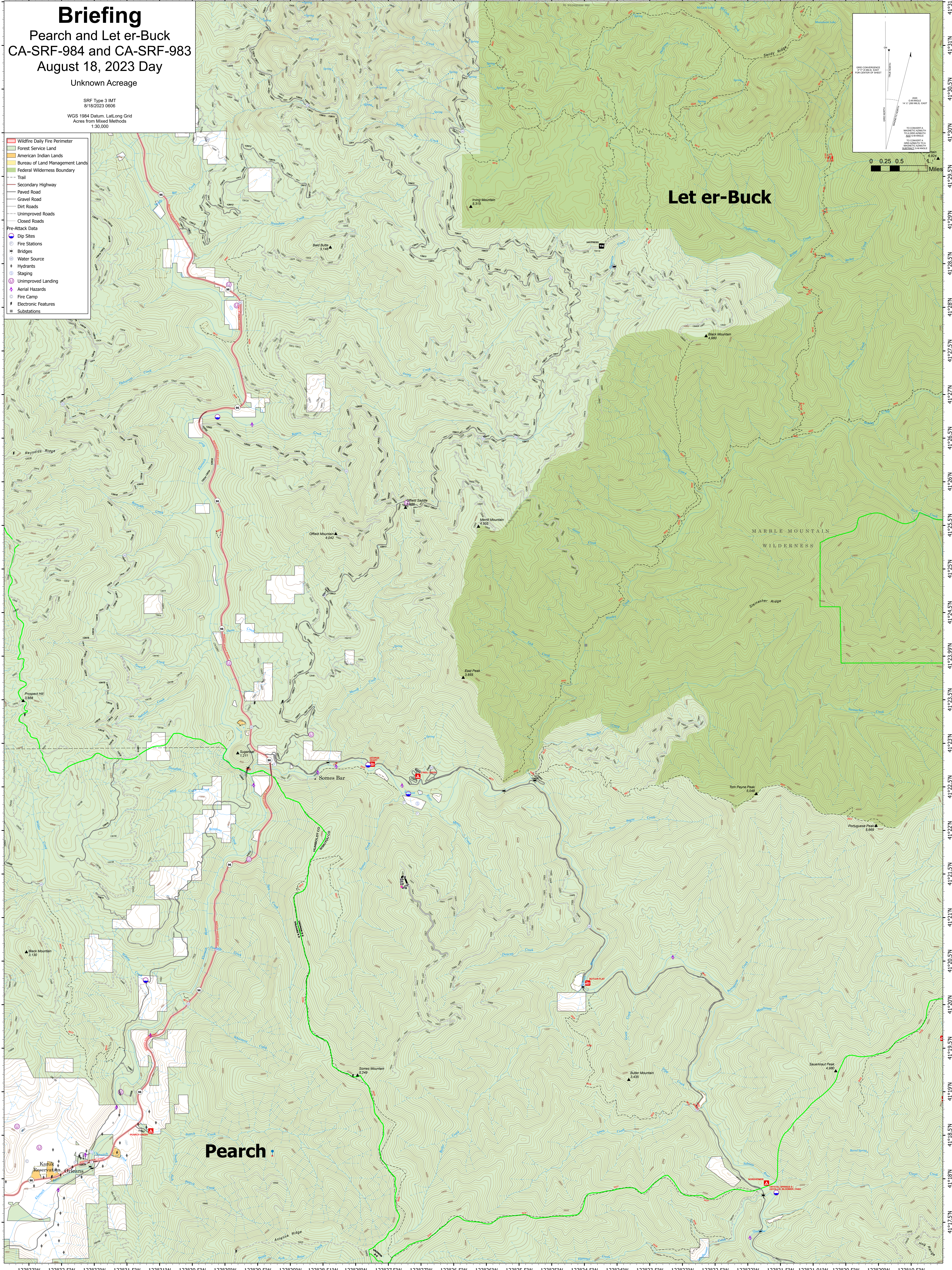
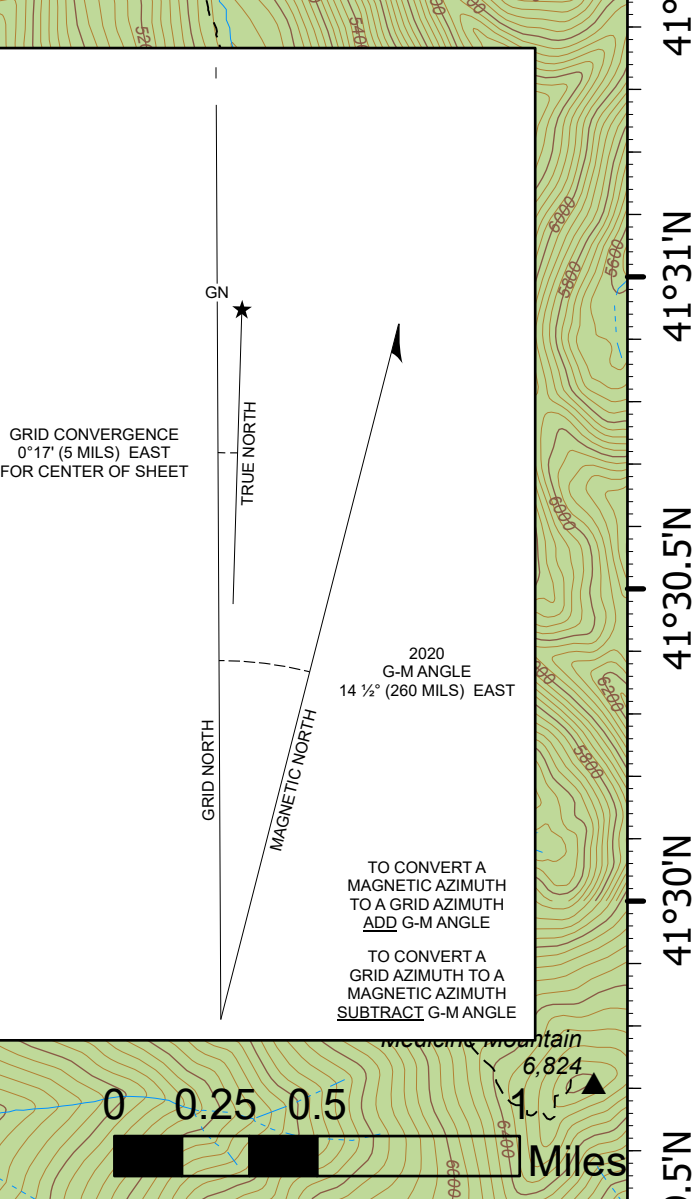
CA-SRF-984 and CA-SRF-983

August 18, 2023 Day

Unknown Acreage

SRF Type 3 IMT
8/18/2023 0606
WGS 1984 Datum, Lat/Long Grid
Acres from Mixed Methods
1:30,000

- Wildfire Daily Fire Perimeter
- Forest Service Land
- American Indian Lands
- Bureau of Land Management Lands
- Federal Wilderness Boundary
- Trail
- Secondary Highway
- Paved Road
- Gravel Road
- Dirt Roads
- Unimproved Roads
- Closed Roads
- Pre-Attack Data
- Dip Sites
- Fire Stations
- Bridges
- Water Source
- Hydrants
- Staging
- Unimproved Landing
- Aerial Hazards
- Fire Camp
- Electronic Features
- Substations



Let er-Buck

Pearch

123°33'W 123°32.5'W 123°32'W 123°31.5'W 123°31'W 123°30.5'W 123°30'W 123°29.5'W 123°29'W 123°28.5'W 123°28'W 123°27.5'W 123°27'W 123°26.5'W 123°26'W 123°25.5'W 123°25'W 123°24.5'W 123°24'W 123°23.5'W 123°23'W 123°22.5'W 123°22'W 123°21.5'W 123°21.01'W 123°20.5'W 123°20'W 123°19.5'W

41°31'N 41°30.5'N 41°30'N 41°29.5'N 41°29'N 41°28.5'N 41°28'N 41°27.5'N 41°27'N 41°26.5'N 41°26'N 41°25.5'N 41°25'N 41°24.5'N 41°24'N 41°23.99'N 41°23.5'N 41°23'N 41°22.5'N 41°22'N 41°21.5'N 41°21'N 41°20.5'N 41°20'N 41°19.5'N 41°19'N 41°18.5'N 41°18'N 41°17.5'N