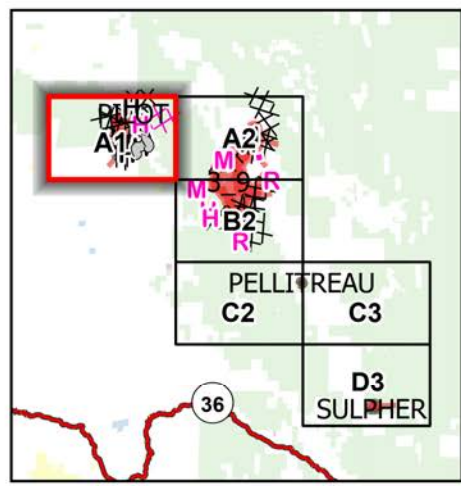
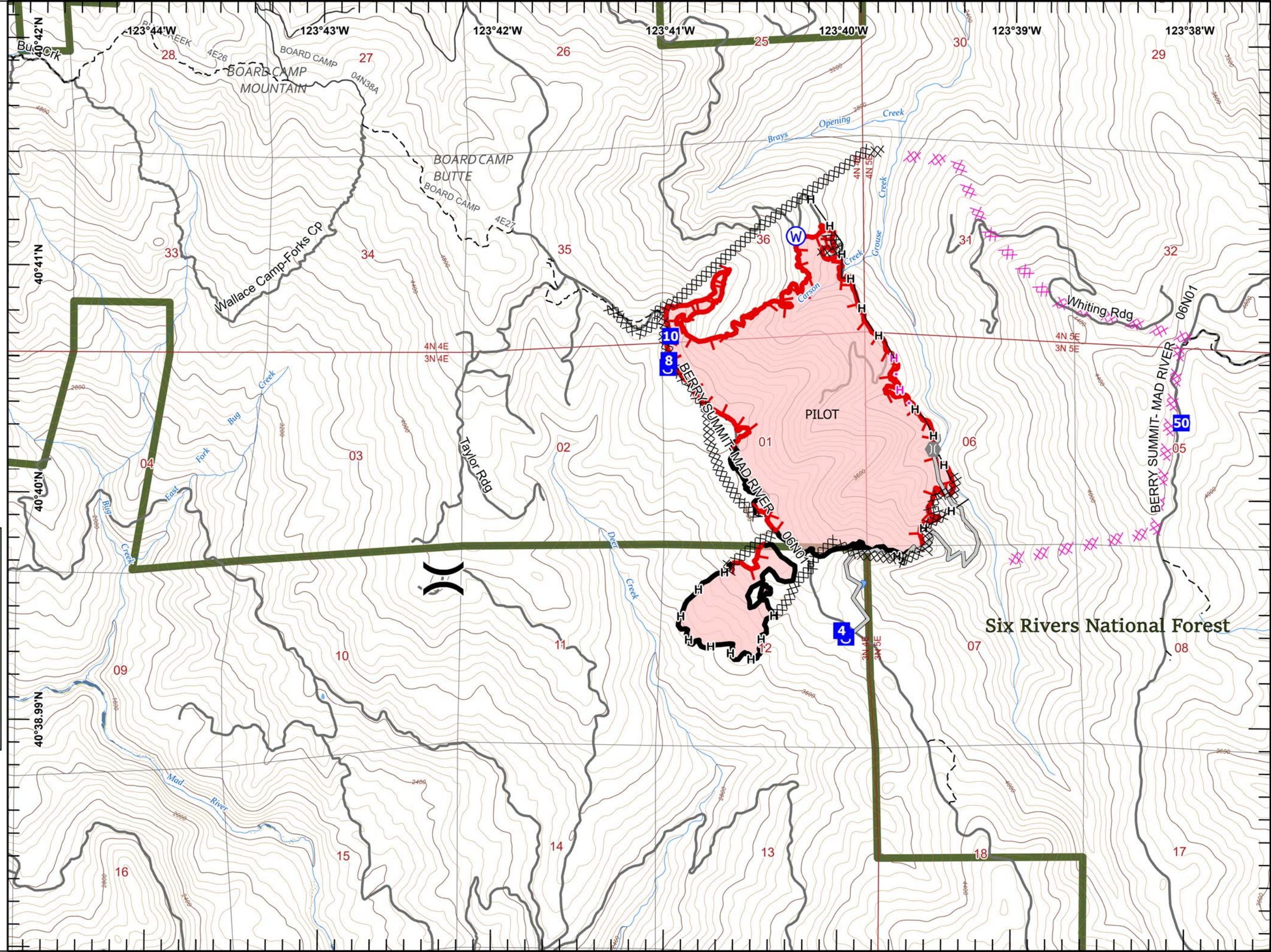


IAP South Fork Complex

CA-SHF-001004
08/23/2023

- () Division Break
- Drop Point
- S Staging Area
- ⊕ Bridge
- W Water Source
- ⊗⊗ Completed Dozer Line
- H Completed Hand Line
- ⊗ Planned Dozer Line
- H Planned Hand Line
- Access or Improved Road
- ▭ Wildfire Daily Fire Perimeter







Miles
0 0.3 0.6

1:29,000

Last Updated
8/22/2023
22:38

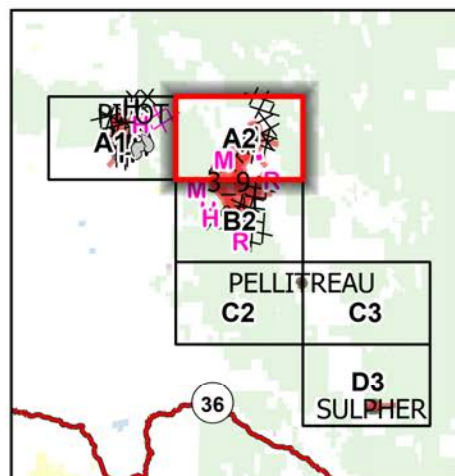


Six Rivers National Forest




IAP South Fork Complex

CA-SHF-001004
08/23/2023

-  Dip Site
-  Division Break
-  Drop Point
-  Completed Dozer Line
-  Completed Hand Line
-  Planned Dozer Line
-  Planned Hand Line
-  Planned Mixed Construction Line
-  Planned Road as Line
-  Wildfire Daily Fire Perimeter




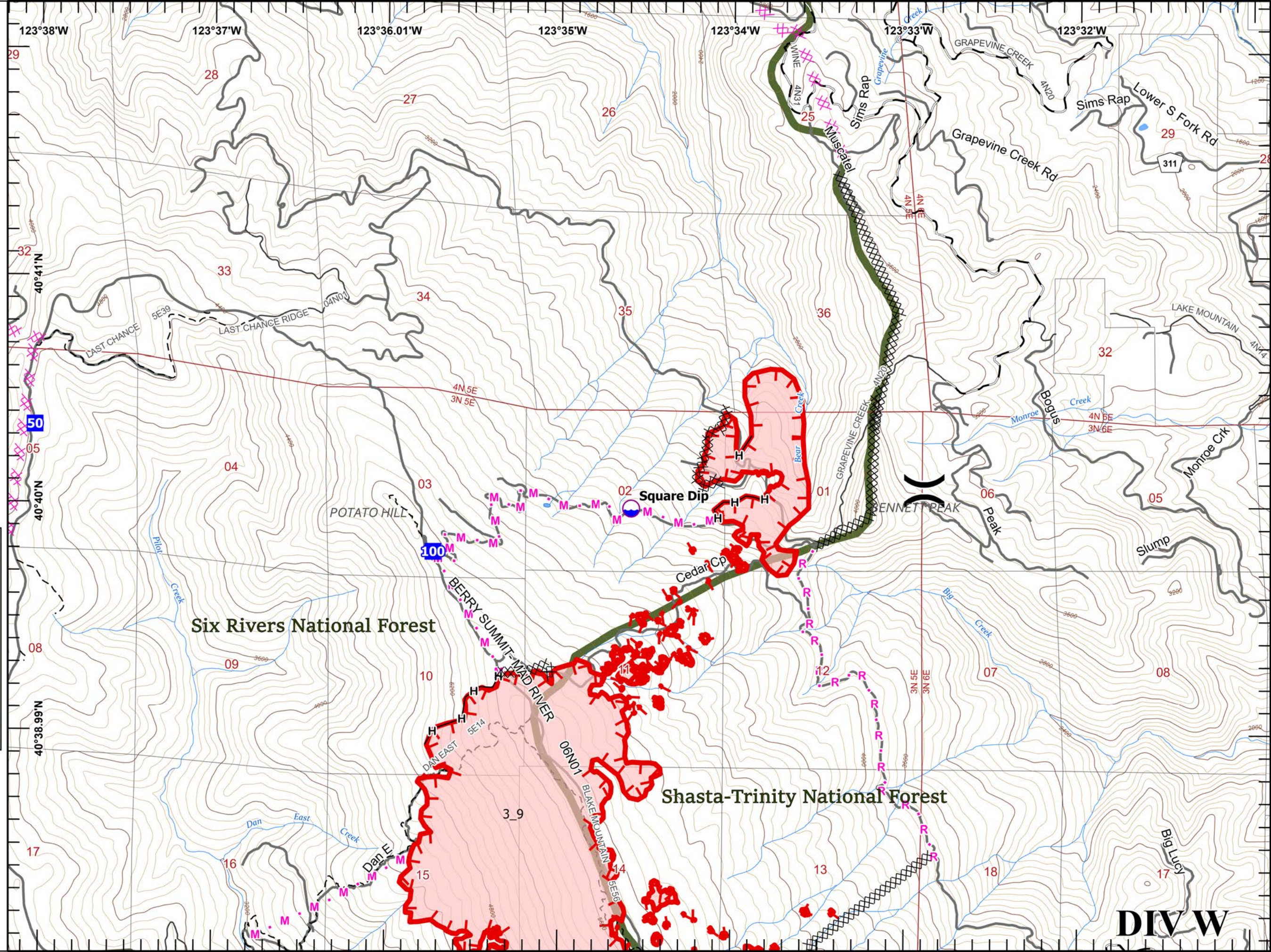
Page 2 of 6

Miles
0 0.3 0.6

1:29,000


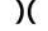









Last Updated
8/22/2023
22:40

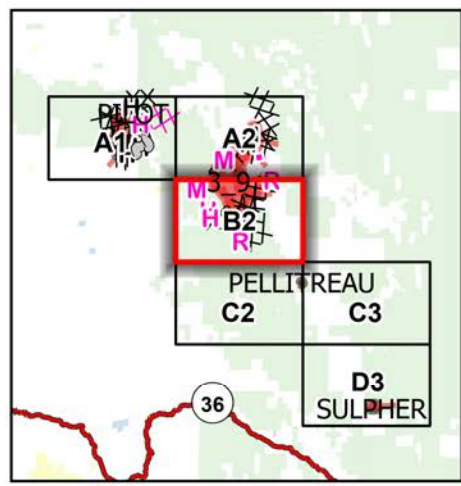



DIV W

IAP South Fork Complex

CA-SHF-001004
08/23/2023

-  Unimproved Landing Area
-  Division Break
-  Drop Point
-  Internet Access
-  Repeater
-  Completed Dozer Line
-  Completed Hand Line
-  Planned Hand Line
-  Planned Mixed Construction Line
-  Planned Road as Line
-  Wildfire Daily Fire Perimeter



Page 3 of 6



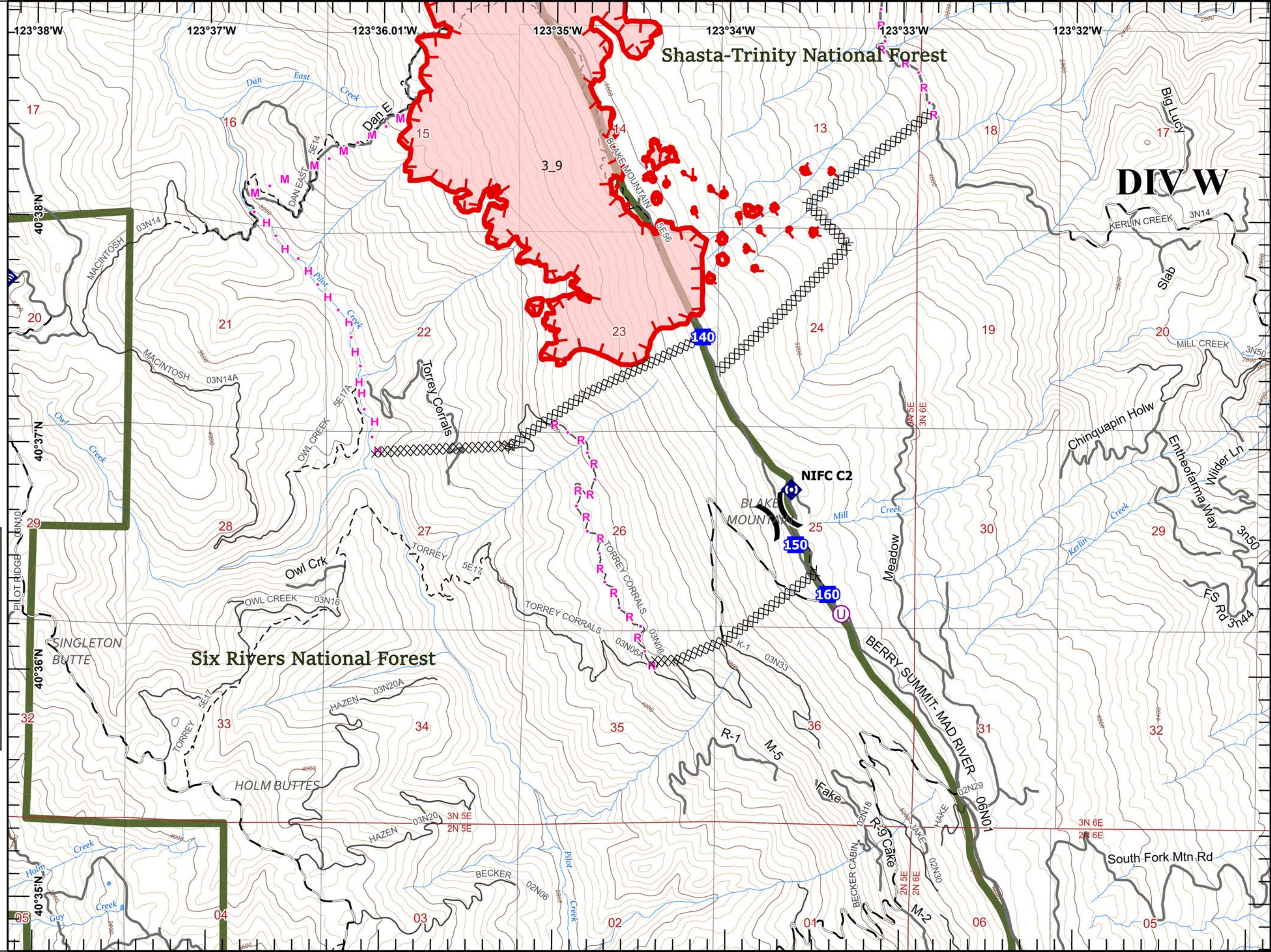


Miles

0 0.3 0.6

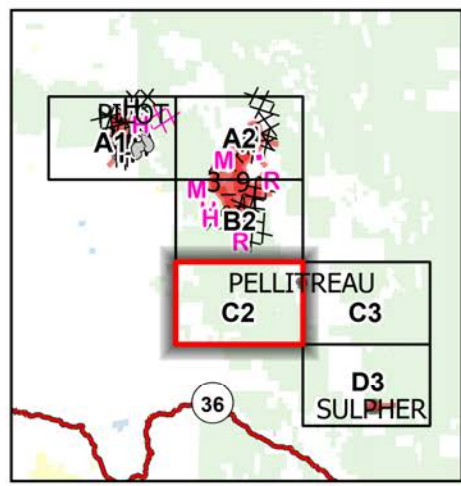
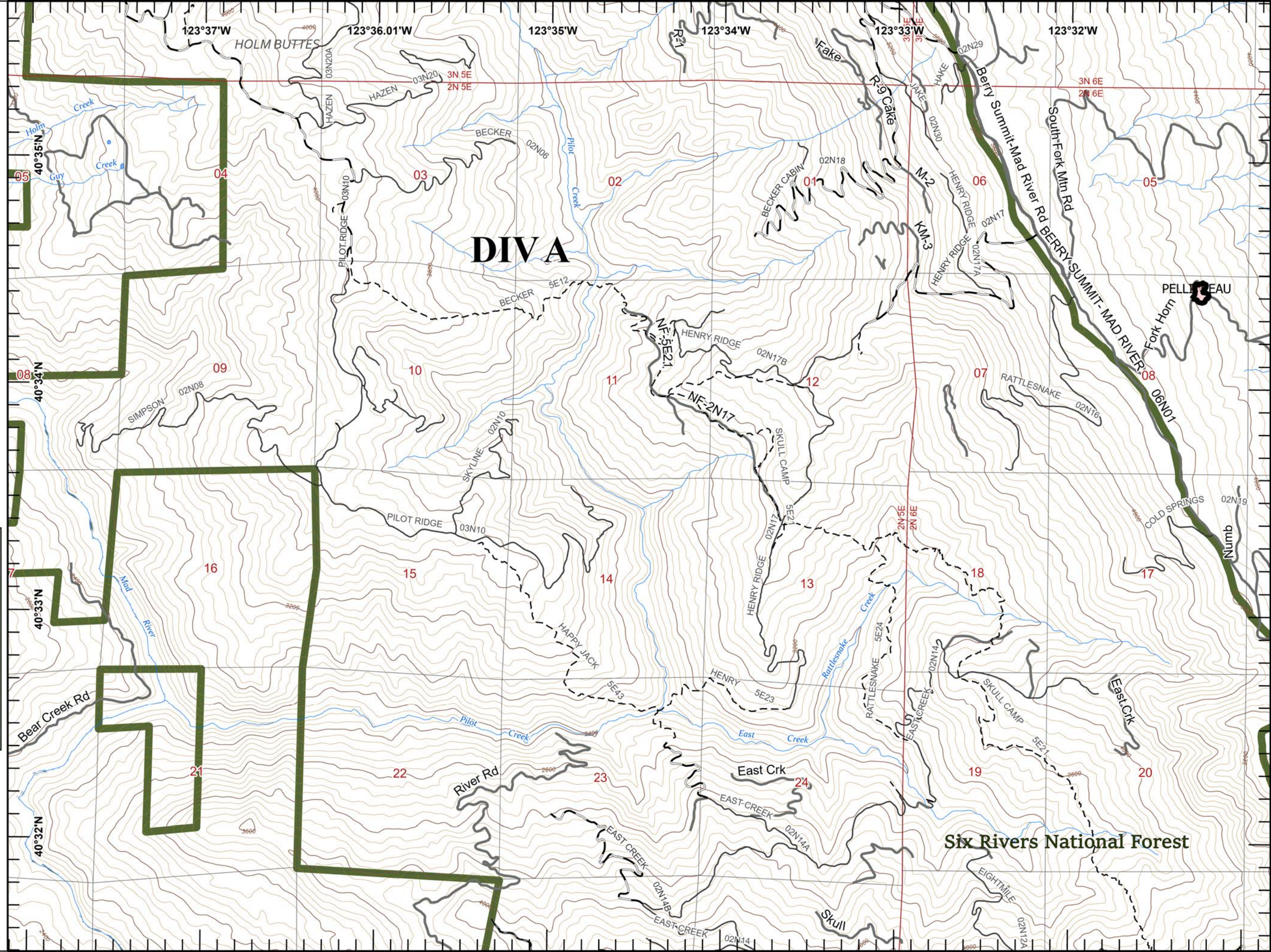

1:29,000

Last Updated 8/22/2023 22:41



DIV W

 Wildfire Daily Fire Perimeter

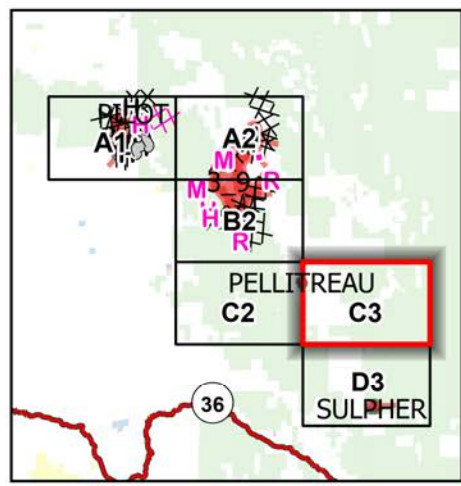
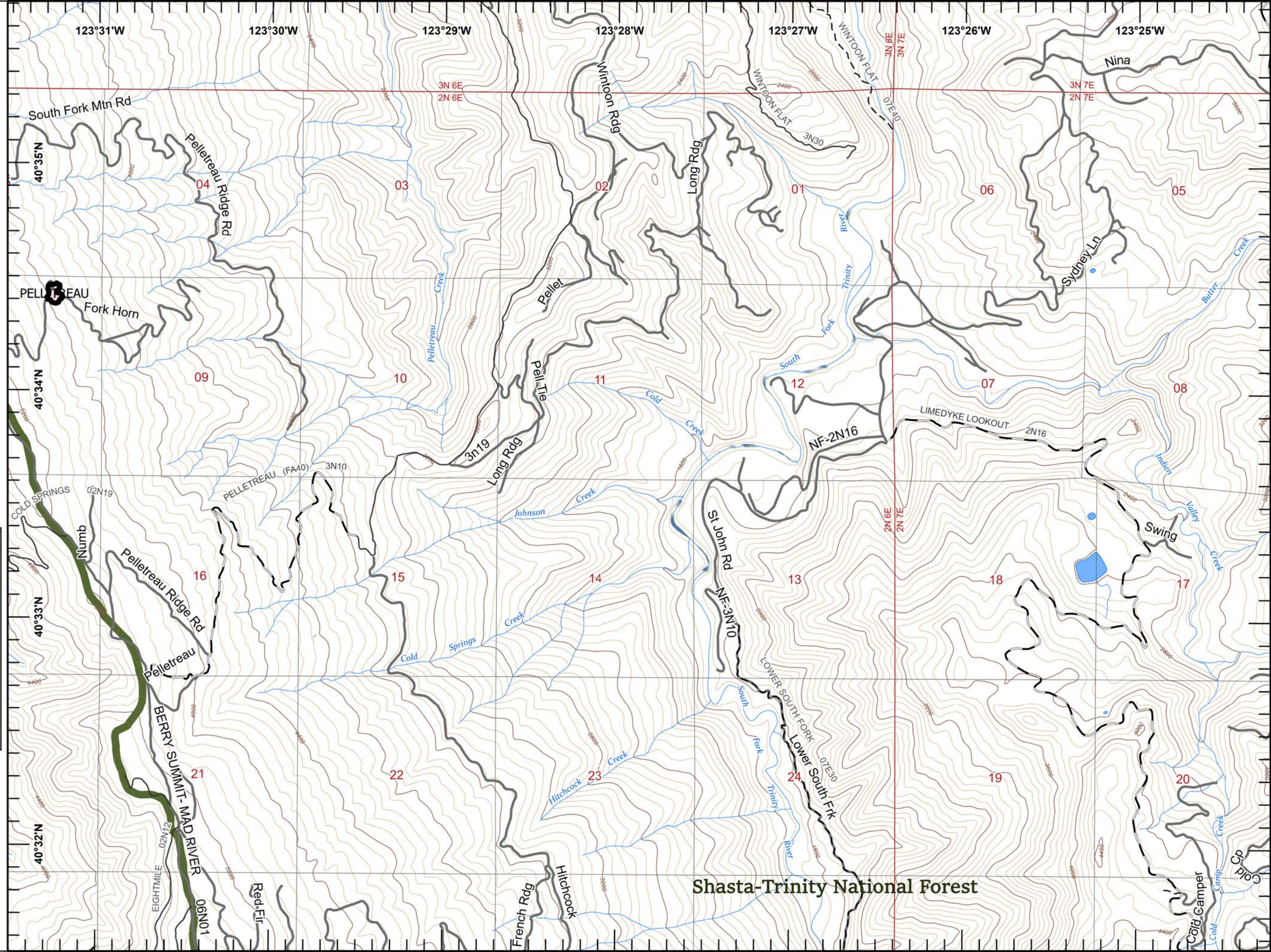
Miles
 0 0.3 0.6
 1:29,000
 Last Updated
 8/22/2023
 22:41

Six Rivers National Forest

IAP South Fork Complex

CA-SHF-001004
08/23/2023

 Wildfire Daily Fire Perimeter





Miles
0 0.3 0.6

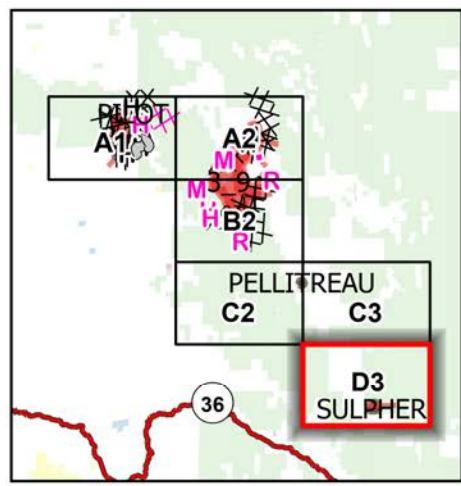

1:29,000

Last Updated
8/22/2023
22:42



Shasta-Trinity National Forest

 Stream Crossing
 Wildfire Daily Fire Perimeter



Miles
 0 0.3 0.6
 1:29,000
 Last Updated
 8/22/2023
 22:42

