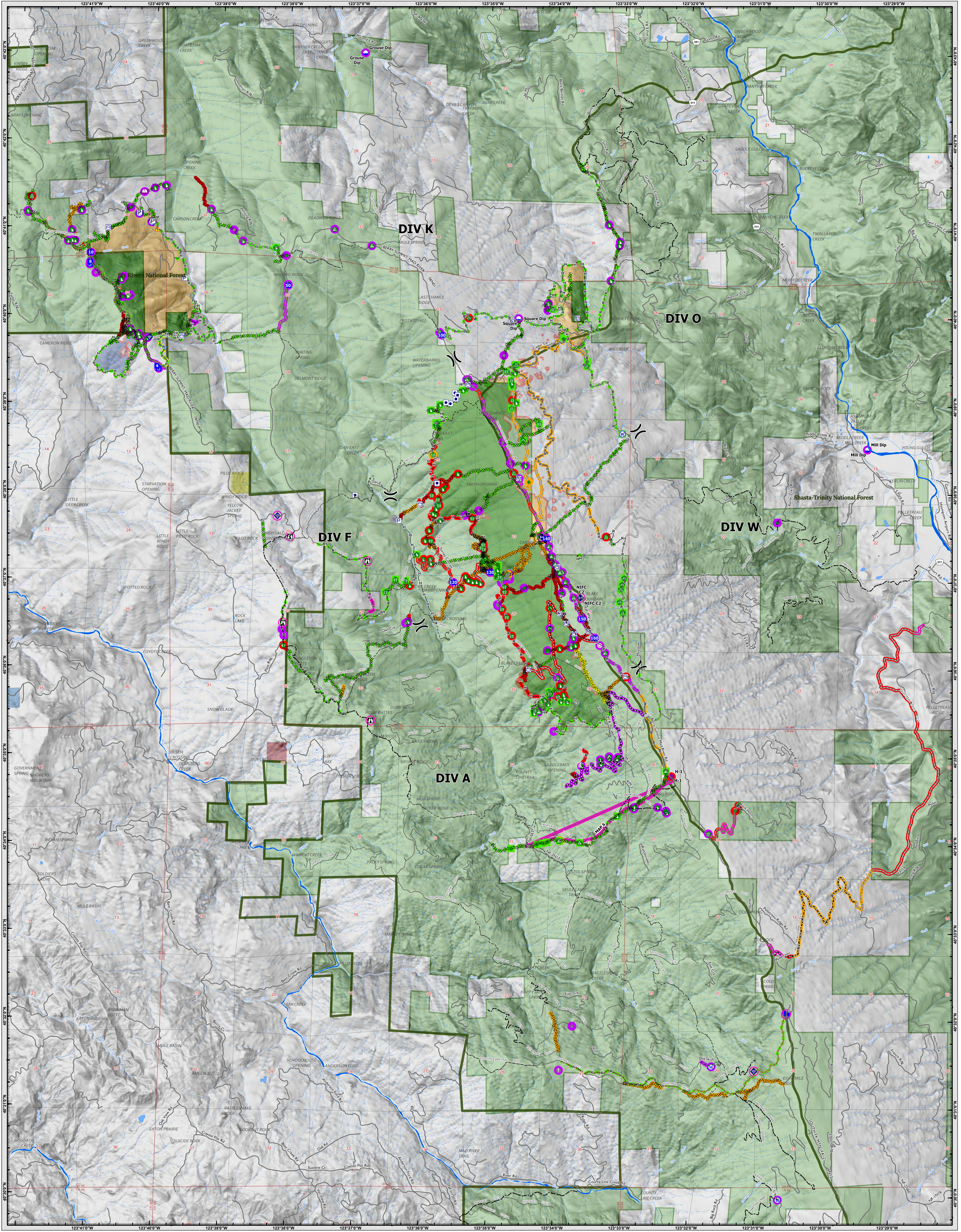


REPAIR OVERVIEW

South Fork Complex September 21, 2023

REPAIR OVERVIEW CA-SHF-001004 September 21, 2023



		Accountable Property <ul style="list-style-type: none">Other PropertyPumpWater TankDip SiteHelispot	<ul style="list-style-type: none">Unimproved Landing Area <ul style="list-style-type: none">Division Break <ul style="list-style-type: none">Drop Point <ul style="list-style-type: none">Staging Area	<ul style="list-style-type: none">Lookout <ul style="list-style-type: none">Value at Risk <ul style="list-style-type: none">Other <ul style="list-style-type: none">Landmark <ul style="list-style-type: none">Bridge <ul style="list-style-type: none">Water Development or Draft Site <ul style="list-style-type: none">Stream Crossing	<ul style="list-style-type: none">Road Repair <ul style="list-style-type: none">Retardant in Avoidance Area <ul style="list-style-type: none">Rescue Point <ul style="list-style-type: none">Landing or Log Deck <ul style="list-style-type: none">Repeater <ul style="list-style-type: none">Hazard <ul style="list-style-type: none">Water Source	<ul style="list-style-type: none">Restricted Water Source <ul style="list-style-type: none">NHDPoint <ul style="list-style-type: none">Lake / Pond <ul style="list-style-type: none">Lake / Pond (Intermittent) <ul style="list-style-type: none">Stream/River	<ul style="list-style-type: none">Stream/River Intermittent <ul style="list-style-type: none">Local Roads <ul style="list-style-type: none">Gravel Roads <ul style="list-style-type: none">Dirt Roads <ul style="list-style-type: none">Trails	Repair Status <ul style="list-style-type: none">In Use - Fire ManagementIn Use - Fire ManagementNeeds AssessmentRepair NeededIn ProgressCompleted - Ready for InspectionCompleted - InspectedNo Repair Needed	Other - See Comments <ul style="list-style-type: none">In Use - Fire ManagementNeeds AssessmentRepair NeededIn ProgressCompleted - Ready for InspectionCompleted - InspectedNo Repair Needed
--	--	--	--	---	---	--	--	---	---

Datum: NAD 1983 UTM Zone 10N