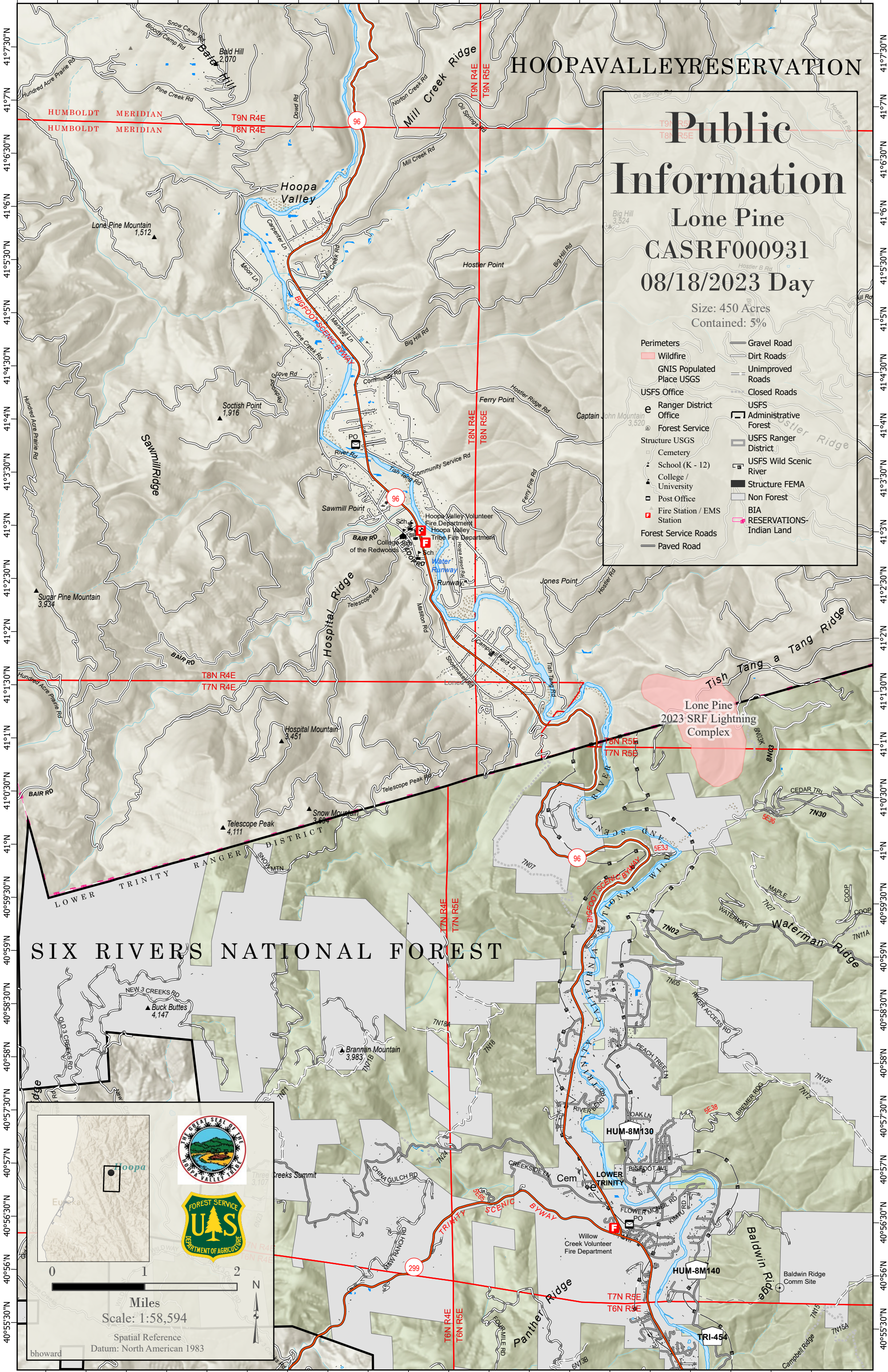


123°45'30"W 123°44'30"W 123°43'30"W 123°42'30"W 123°41'30"W 123°40'30"W 123°39'30"W 123°38'30"W 123°37'30"W 123°36'30"W 123°35'30"W



HOOPA VALLEY RESERVATION

Public Information

Lone Pine CASRF000931

08/18/2023 Day

Size: 450 Acres
Contained: 5%

Perimeters	Gravel Road
Wildfire	Dirt Roads
GNIS Populated Place USGS	Unimproved Roads
USFS Office	Closed Roads
Ranger District Office	USFS
Forest Service	Administrative Forest
Structure USGS	USFS Ranger District
Cemetery	USFS Wild Scenic River
School (K - 12)	Structure FEMA
College / University	Non Forest
Post Office	BIA
Fire Station / EMS Station	RESERVATIONS-Indian Land
Forest Service Roads	
Paved Road	

SIX RIVERS NATIONAL FOREST

Lone Pine 2023 SRF Lightning Complex

Miles Scale: 1:58,594

Spatial Reference Datum: North American 1983

123°45'W 123°44'W 123°43'W 123°42'W 123°41'W 123°40'W 123°39'W 123°38'W 123°37'W 123°36'W 123°35'W