

Briefing

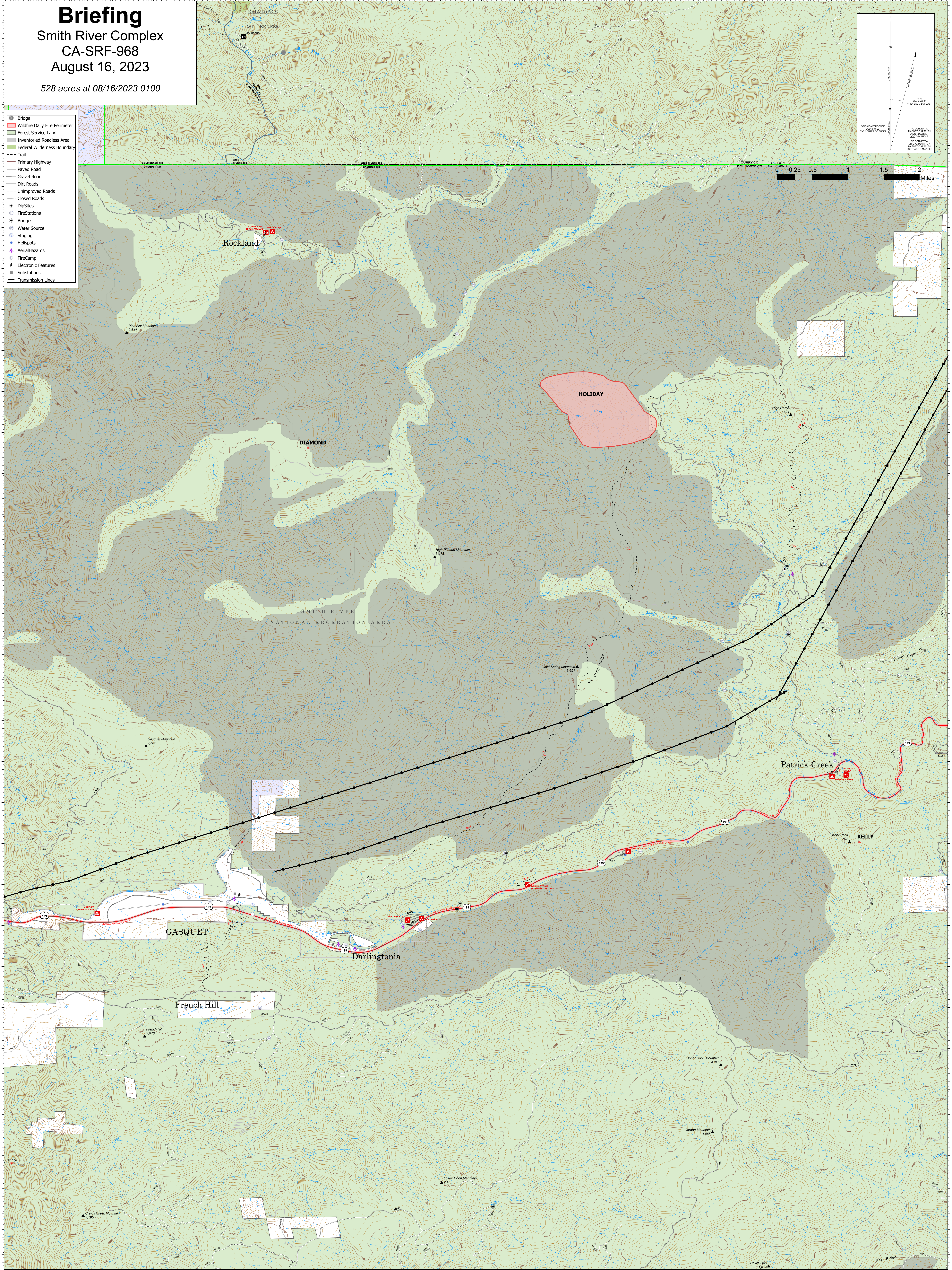
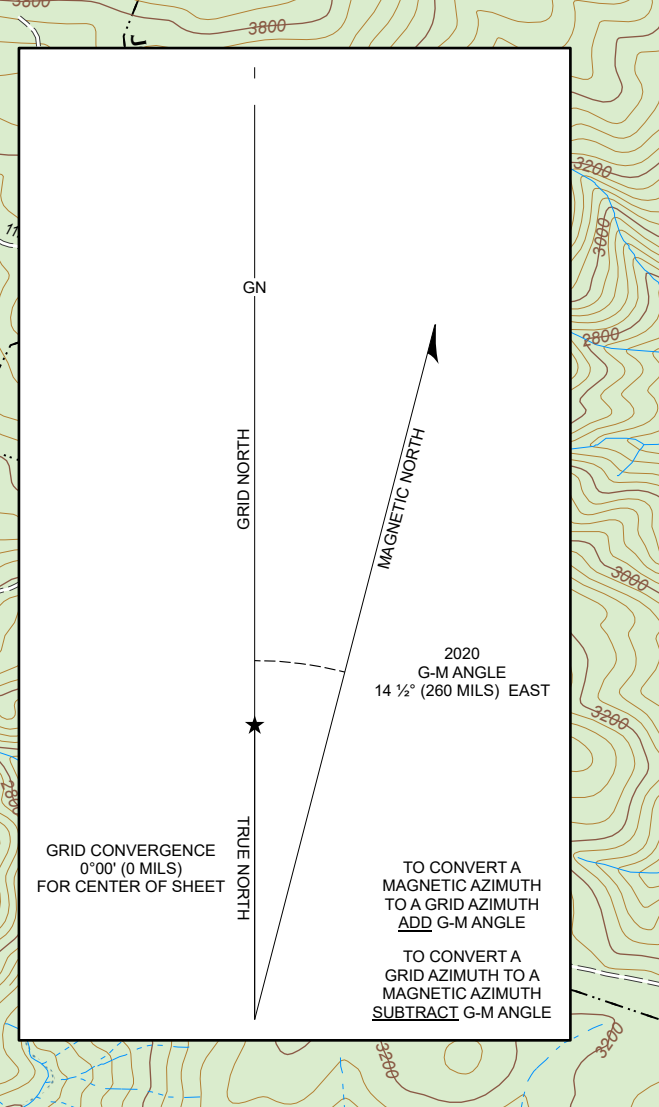
Smith River Complex

CA-SRF-968

August 16, 2023

528 acres at 08/16/2023 0100

- Bridge
- Wildfire Daily Fire Perimeter
- Forest Service Land
- Inventoried Roadless Area
- Federal Wilderness Boundary
- Trail
- Primary Highway
- Paved Road
- Gravel Road
- Dirt Roads
- Unimproved Roads
- Closed Roads
- Dip Sites
- Fire Stations
- Bridges
- Water Source
- Staging
- Helispots
- Aerial Hazards
- Fire Camp
- Electronic Features
- Substations
- Transmission Lines



124°0.5'W 124°W 123°59.5'W 123°59'W 123°58.5'W 123°58'W 123°57.5'W 123°57'W 123°56.5'W 123°56'W 123°55.5'W 123°55'W 123°54.5'W 123°54'W 123°53.5'W 123°53'W 123°52.5'W 123°52'W 123°51.5'W 123°51.01'W 123°50.5'W 123°50'W 123°49.5'W

42°1.49'N 42°1.48'N 42°1.47'N 42°1.46'N 42°1.45'N 42°1.44'N 42°1.43'N 42°1.42'N 42°1.41'N 42°1.40'N 42°1.39'N 42°1.38'N 42°1.37'N 42°1.36'N 42°1.35'N 42°1.34'N 42°1.33'N 42°1.32'N 42°1.31'N 42°1.30'N 42°1.29'N 42°1.28'N 42°1.27'N 42°1.26'N 42°1.25'N 42°1.24'N 42°1.23'N 42°1.22'N 42°1.21'N 42°1.20'N 42°1.19'N 42°1.18'N 42°1.17'N 42°1.16'N 42°1.15'N 42°1.14'N 42°1.13'N 42°1.12'N 42°1.11'N 42°1.10'N 42°1.09'N 42°1.08'N 42°1.07'N 42°1.06'N 42°1.05'N 42°1.04'N 42°1.03'N 42°1.02'N 42°1.01'N 42°1.00'N