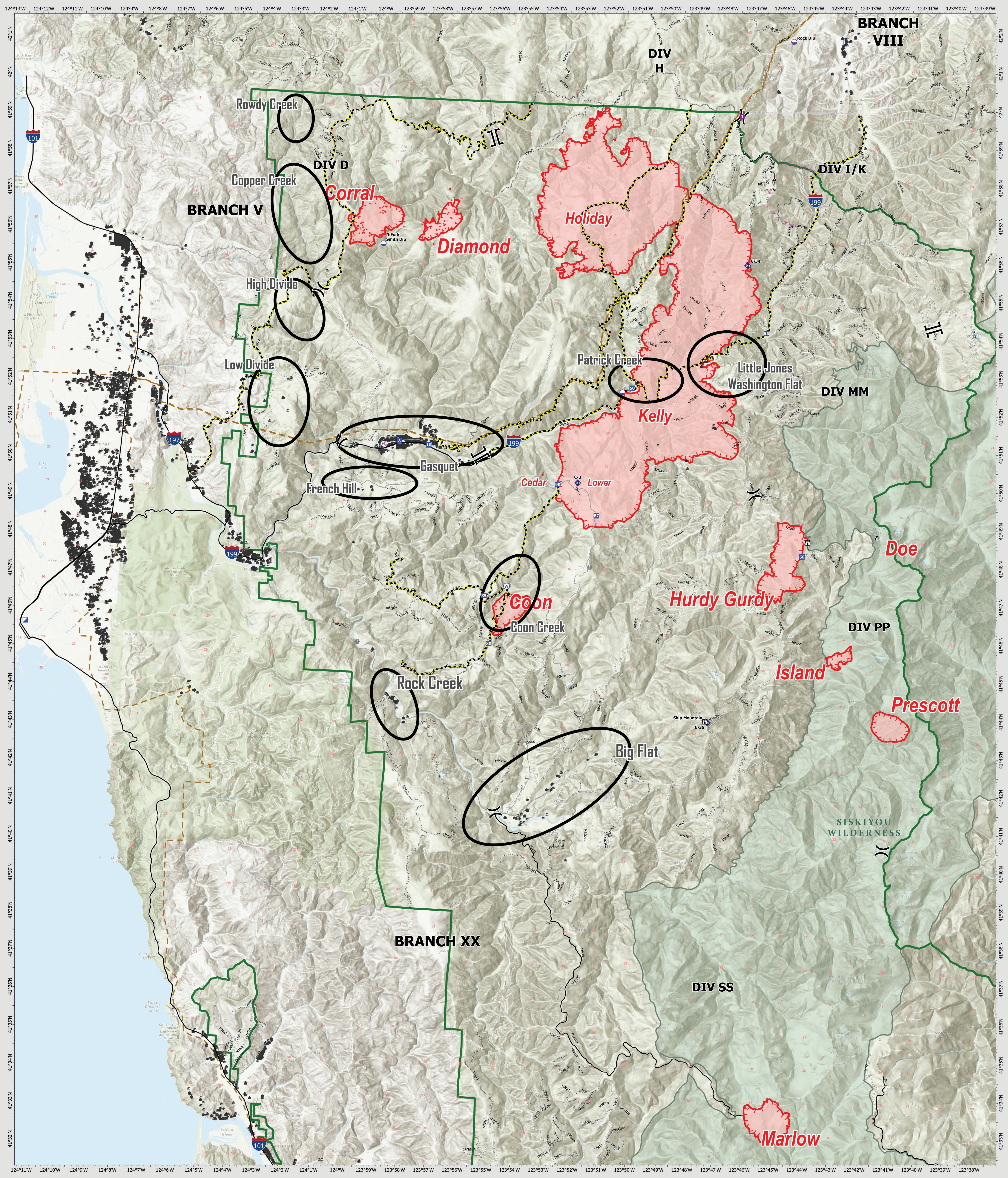


COMMUNITY





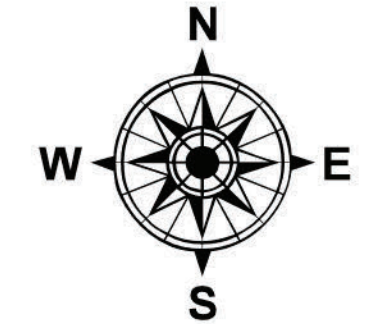
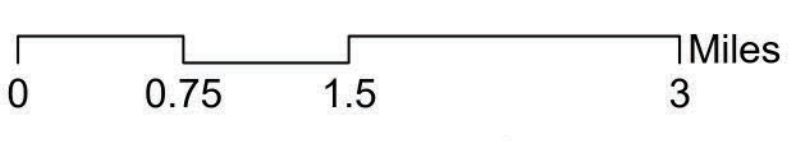
Smith River Complex

CA-SRF-000986
08/21/23

30,392 acres
Updated 08/20/23 @ 1810

<ul style="list-style-type: none"> ▭ Wildfire Daily Fire Perimeter Contained Uncontained ● Dip Site ⊙ Helispot ⊕ Helibase Division Break Branch Break 	<ul style="list-style-type: none"> ■ Incident Command Post ● Drop Point ⊙ Camp ⊕ Lookout ⊖ Value at Risk ⊗ Bridge ⊘ Repeater ⚠ Hazard ⊕ Water Source — Completed Hand Line 	<ul style="list-style-type: none"> — Completed Mixed Construction Line ⊗ Planned Dozer Line ⊙ Other Property ● IR Isolated Heat Source ● Possible IR Heat Source — Transmission Lines ▭ Six Rivers National Forest ▭ Wilderness ● Structures 	<ul style="list-style-type: none"> — Current Road Closures — State Highways — County Roads USFS Roads 1 - BASIC CUSTODIAL CARE (CLOSED) 2 - HIGH CLEARANCE VEHICLES 3 - SUITABLE FOR PASSENGER CARS 4 - MODERATE DEGREE OF USER COMFORT 5 - HIGH DEGREE OF USER COMFORT
--	--	---	---

Datum: North American 1983