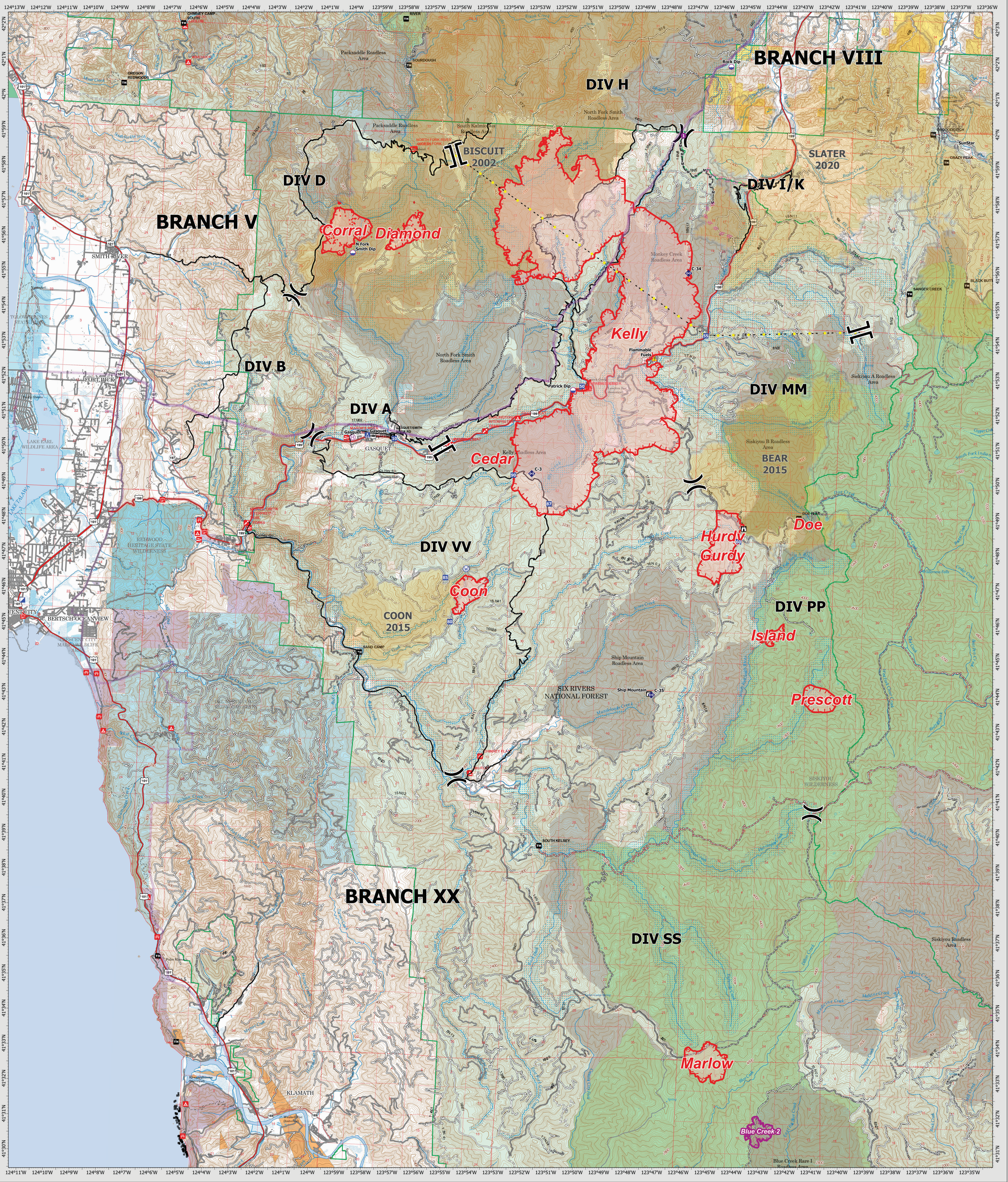
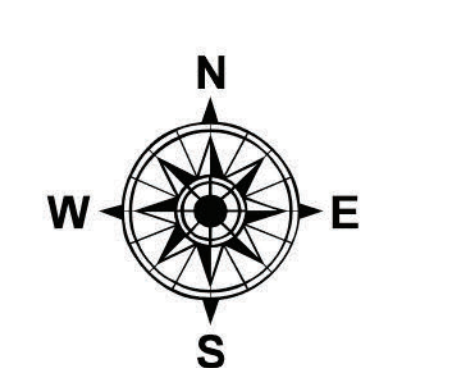


OPERATIONS - OVERVIEW



Smith River Complex - South
 CA-SRF-000986
 8/21/23
 30,392 acres
 Updated 8/20/23 @ 1810

- | | | |
|-----------------------------------|-----------------------|----------------------------------|
| Wildfire Daily Fire Perimeter | Transmission Lines | Value at Risk |
| Fire History | Dip Site | Bridge |
| Contained | Helispot | Repeater |
| Uncontained | Helibase | Hazard |
| Completed Hand Line | Division Break | Water Source |
| Completed Mixed Construction Line | Branch Break | Structures |
| Planned Dozer Line | Incident Command Post | County Road |
| Highlighted Feature | Drop Point | Wildfire Daily Perimeter (OTHER) |
| IR Isolated Heat Source | Camp | Uncontained (OTHER) |
| Possible IR Heat Source | Lookout | |



0 0.75 1.5 3 Miles
 Datum: North American 1983