

Smith River Complex - South

CA-SRF-000968
8/21/2023

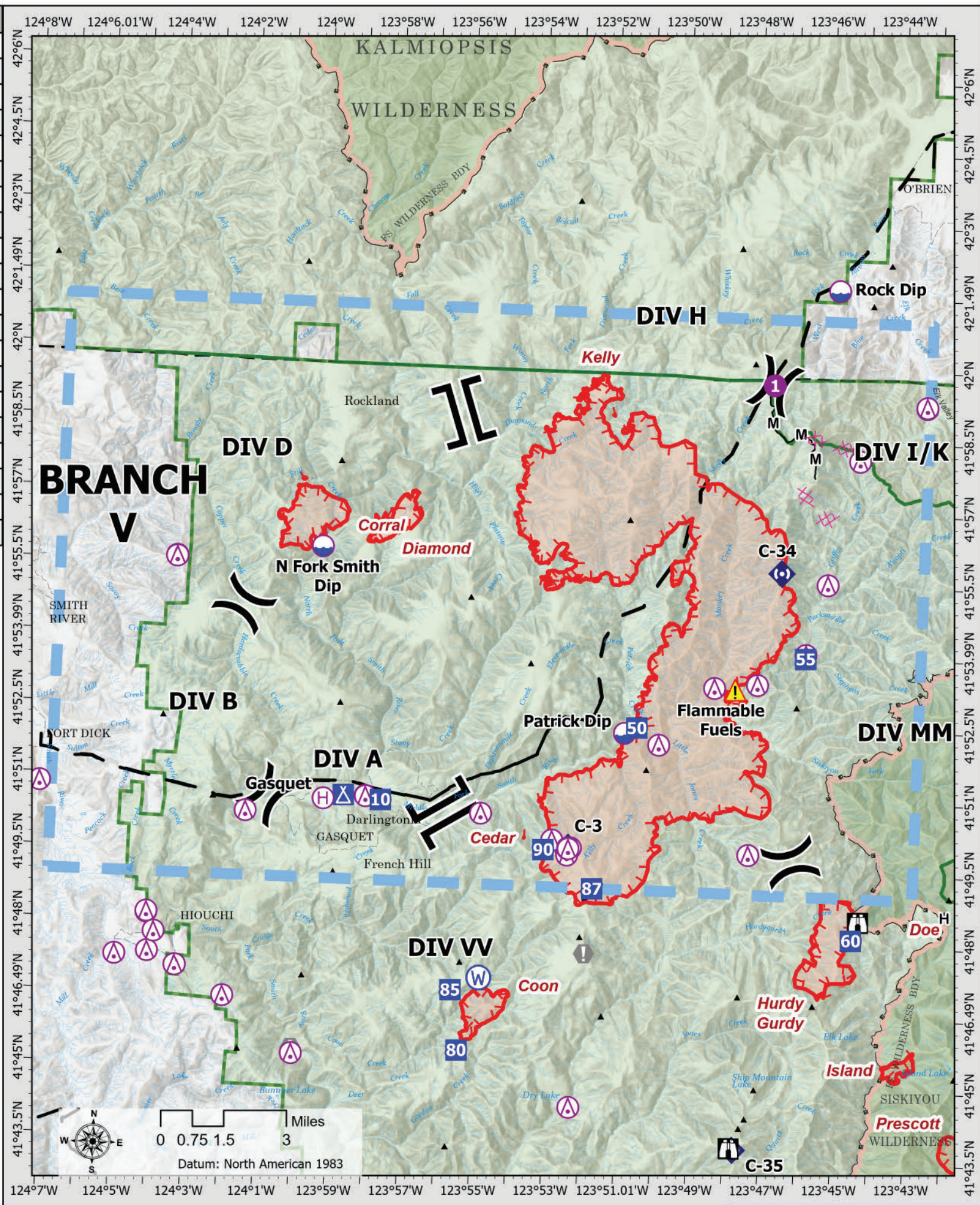
30,392 acres
updated 8/20/2023 1810

- Aerial Hazard
- Dip Site
- Helispot
- Helibase
- Division Break
- Branch Break
- Incident Command Post
- Drop Point
- Camp
- Lookout
- Value at Risk
- Bridge
- Repeater
- Hazard
- Water Source
- Summit; Gap
- Completed Hand Line
- Completed Mixed Construction Line
- Planned Dozer Line
- Temporary Flight Restriction
- Contained
- Uncontained
- Uncontained (OTHER)
- Transmission Lines
- Wildfire Daily Fire Perimeter
- Wildfire Daily Perimeter (OTHER)

Datum: North American 1983

CAIIMT15 GISS Updated: 8/21/2023 0129

Point Type	Label	Comments	Latitude	Longitude	Elevation
Camp	Gasquet		41° 50.755' N	123° 58.898' W	
Dip Site	N Fork Smith Dip		41° 55.920' N	123° 59.741' W	
Dip Site	Patrick Dip		41° 52.268' N	123° 51.165' W	
Dip Site	Seat Dip		42° 05.650' N	123° 42.329' W	
Dip Site	Rock Dip		42° 01.650' N	123° 45.641' W	
Drop Point	60	Good staging area	41° 48.137' N	123° 44.657' W	
Drop Point	90		41° 49.781' N	123° 53.296' W	
Drop Point	85		41° 46.787' N	123° 55.718' W	
Drop Point	80		41° 45.535' N	123° 55.480' W	
Drop Point	50		41° 52.389' N	123° 50.831' W	
Drop Point	10		41° 50.682' N	123° 57.866' W	
Drop Point	55		41° 53.966' N	123° 46.210' W	
Drop Point	87		41° 49.004' N	123° 51.903' W	
Helibase	Gasquet		41° 50.667' N	123° 59.455' W	
Helibase	Cave Jct		42° 06.250' N	123° 40.917' W	
Helispot	1	HIGE needs dust abatement.	41° 59.635' N	123° 47.356' W	3500
Incident Command Post			41° 45.636' N	124° 11.704' W	
Repeater	C-34		41° 55.726' N	123° 46.958' W	
Repeater	C-35		41° 43.686' N	123° 47.732' W	
Repeater	C-3		41° 49.845' N	123° 52.604' W	



General Remarks, Safety Notes, Hazards, Air Operations Special Equipment, etc.

TRACK ALL DIPSITE LOCATIONS / NUMBER OF DIPS / GALLONS TAKEN.
TRACK ALL DROP LOCATIONS / NUMBER OF DROPS / GALLONS DROPPED
All GPS DATA TO BE COLLECTED IN DEGREES, MINUTES, DECIMAL MINUTES FORMAT.

*AVOID Aerial Application of Retardant / Foam / Agent within 300' of Waterways, Bodies of Water, etc.
If Retardant / Foam / Agent is Dropped Within These Areas Immediately Notify the AOB and Provide the Following Information: Lat / Long, Estimated Number of Gallons and a Map Detailing The Area. Watch for Powerlines. Caution when operating in non-TFR areas.*

Frequencies	TX	Tone	RX	Tone	AM / FM
Command	164.1750	(T12) 127.3	172.3750	0.0000	FM
AIR / GROUND - TACTICAL	169.4875	0.0000	169.4875	0.0000	FM
AIR/AIR ROTARY WING	126.0750	0.0000	126.0750	0.0000	AM
Helco Briefing					
AIR TACTICS	173.7000	0.0000	173.7000	0.0000	FM
AIR/GROUND COMMAND	173.8500	0.0000	173.8500	0.0000	AM
TOLC			'a UI00		AM
DECK	163.1000	0.0000	163.1000	0.0000	FM
CALCORD - MEDICAL	156.0750	156.7 (6)	156.0750	156.7 (6)	FM
AIRGUARD - Emergency Only	168.6250	110.9 (1)	168.6250	0.0000	FM