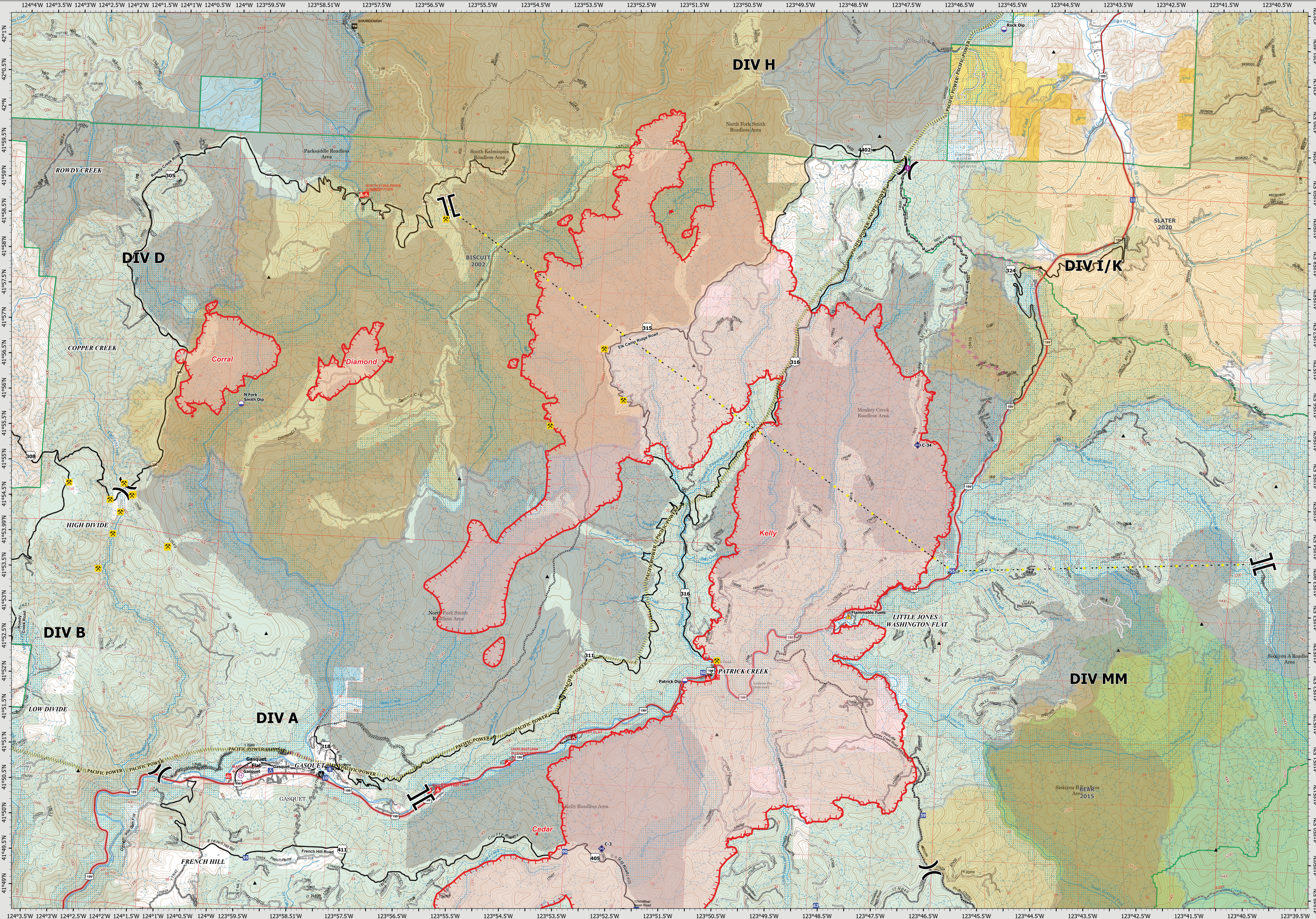


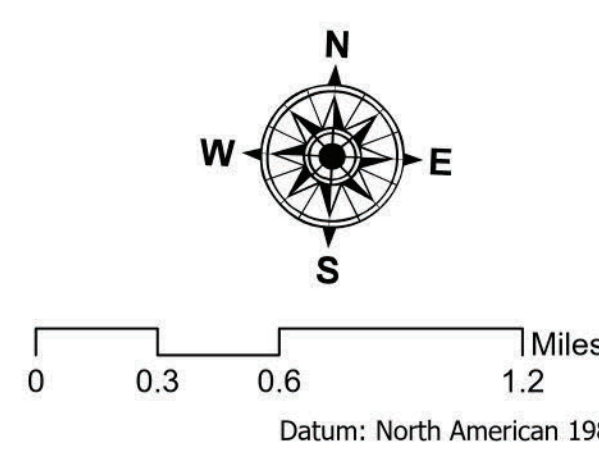
8/22/2023

OPERATIONS - BRANCH V



**Smith River Complex - South**  
 CA-SRF-000968  
 8/22/23  
 38,955 acres  
 Updated 8/21/23 @ 1300

|                                   |                     |                        |
|-----------------------------------|---------------------|------------------------|
| Smith River Cx Wildfire Perimeter | Highlighted Feature | Camp                   |
| Fire History                      | Transmission Lines  | Value at Risk          |
| Uncontained                       | Dip Site            | Repeater               |
| Completed Dozer Line              | Helispot            | Hazard                 |
| Completed Hand Line               | Helibase            | Vertical Mine Openings |
| Completed Mixed Construction Line | Division Break      | Peaks                  |
| Planned Dozer Line                | Branch Break        |                        |
| Planned Hand Line                 | Drop Point          |                        |



Author Name Updated: 8/22/2023 09:43