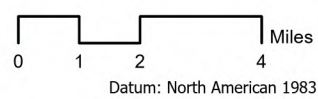
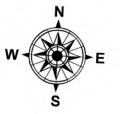


Smith River Complex - South

CA-SRF-000968
8/23/2023

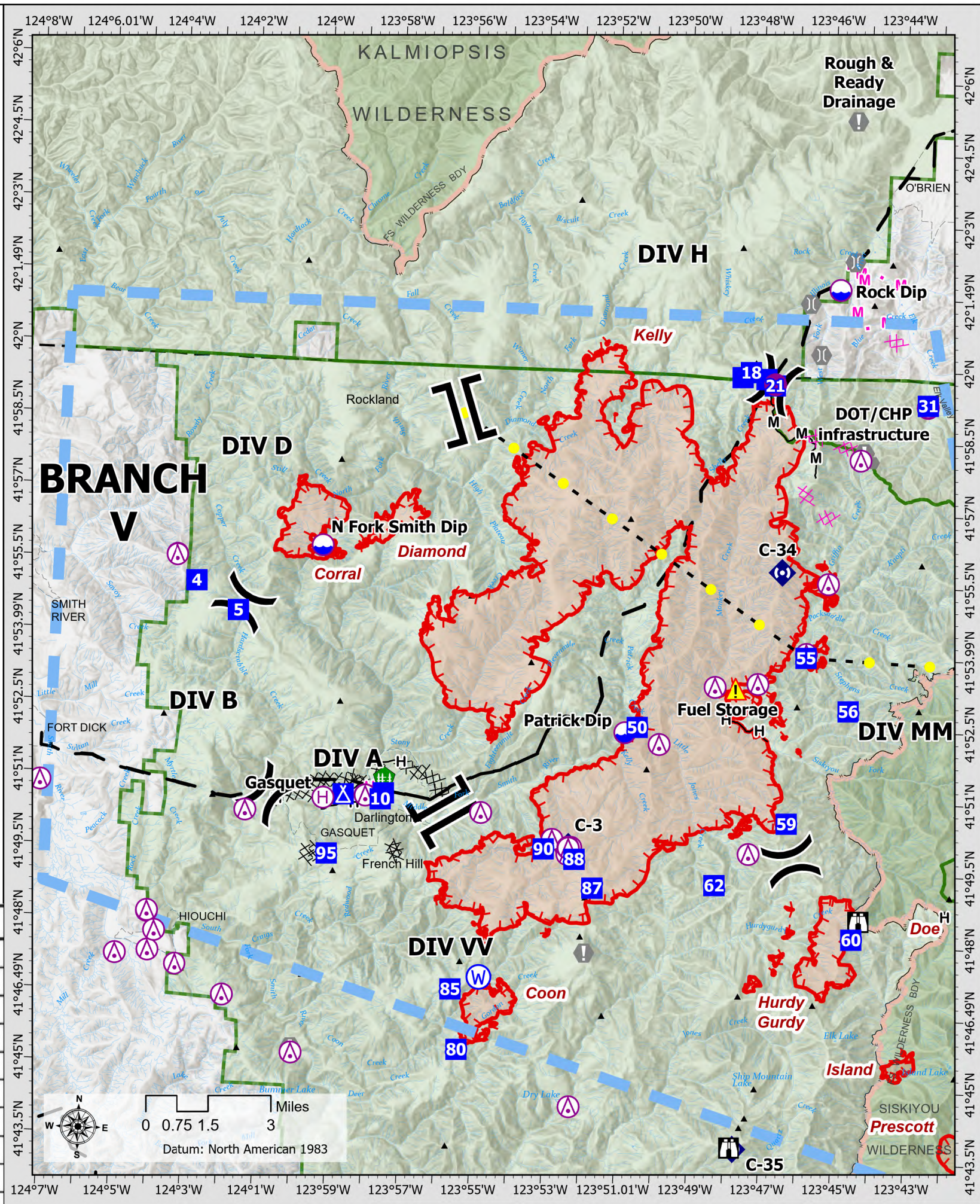
47,277 acres
updated 8/22/2023 2000

- ▬ Smith River Cx Fire Perimeter
- ▬ Other Incident Fire Perimeter
- ⊙ Aerial Hazard
- ⊙ Dip Site
- ⊙ Helispot
- ⊙ Helibase
- ⊙ Division Break
- ⊙ Branch Break
- ⊙ Incident Command Post
- ⊙ Drop Point
- ⊙ Camp
- ⊙ Staging Area
- ⊙ Lookout
- ⊙ Value at Risk
- ⊙ Other
- ⊙ Fire Station
- ⊙ Repeater
- ⊙ Hazard
- ⊙ Summit; Gap
- ⊙ Transmission Lines
- ⊙ Completed Dozer Line
- ⊙ Completed Hand Line
- ⊙ Completed Mixed Construction Line
- ⊙ Planned Dozer Line
- ⊙ Planned Hand Line
- ⊙ Planned Mixed Construction Line
- ⊙ Highlighted Feature
- ⊙ Temporary Flight Restriction
- ⊙ Contained
- ⊙ Uncontained
- ⊙ Other Uncontained



Datum: North American 1983

Point Type	Label
Dip Site	N Fork Smith Dip
Dip Site	Patrick Dip
Dip Site	Rock Dip
Dip Site	Seat Dip
Drop Point	10
Drop Point	16
Drop Point	18
Drop Point	20
Drop Point	25
Drop Point	31
Drop Point	4
Drop Point	5
Drop Point	50
Drop Point	55
Drop Point	56
Drop Point	59
Drop Point	60
Drop Point	62
Drop Point	8
Drop Point	80
Drop Point	85
Drop Point	87
Drop Point	88
Drop Point	90
Drop Point	95
Helibase	Cave Junction
Helibase	Gasquet
Helispot	1
Repeater	Bolan
Repeater	C-3
Repeater	C-34
Repeater	C-35



Frequencies	TX	Tone	RX	Tone	AM / FM
Command	164.1750	(T12) 127.3	172.3750	0.0000	FM
AIR / GROUND - TACTICAL	169.4875	0.0000	169.4875	0.0000	FM
AIR/AIR ROTARY WING	126.0750	0.0000	126.0750	0.0000	AM
Helco Briefing					
AIR TACTICS	173.7000	0.0000	173.7000	0.0000	FM
AIR/GROUND COMMAND	173.8500	0.0000	173.8500	0.0000	AM
TOLC			'a UI00		AM
DECK	163.1000	0.0000	163.1000	0.0000	FM
CALCORD - MEDICAL	156.0750	156.7 (6)	156.0750	156.7 (6)	FM
AIRGUARD - Emergency Only	168.6250	110.9 (1)	168.6250	0.0000	FM