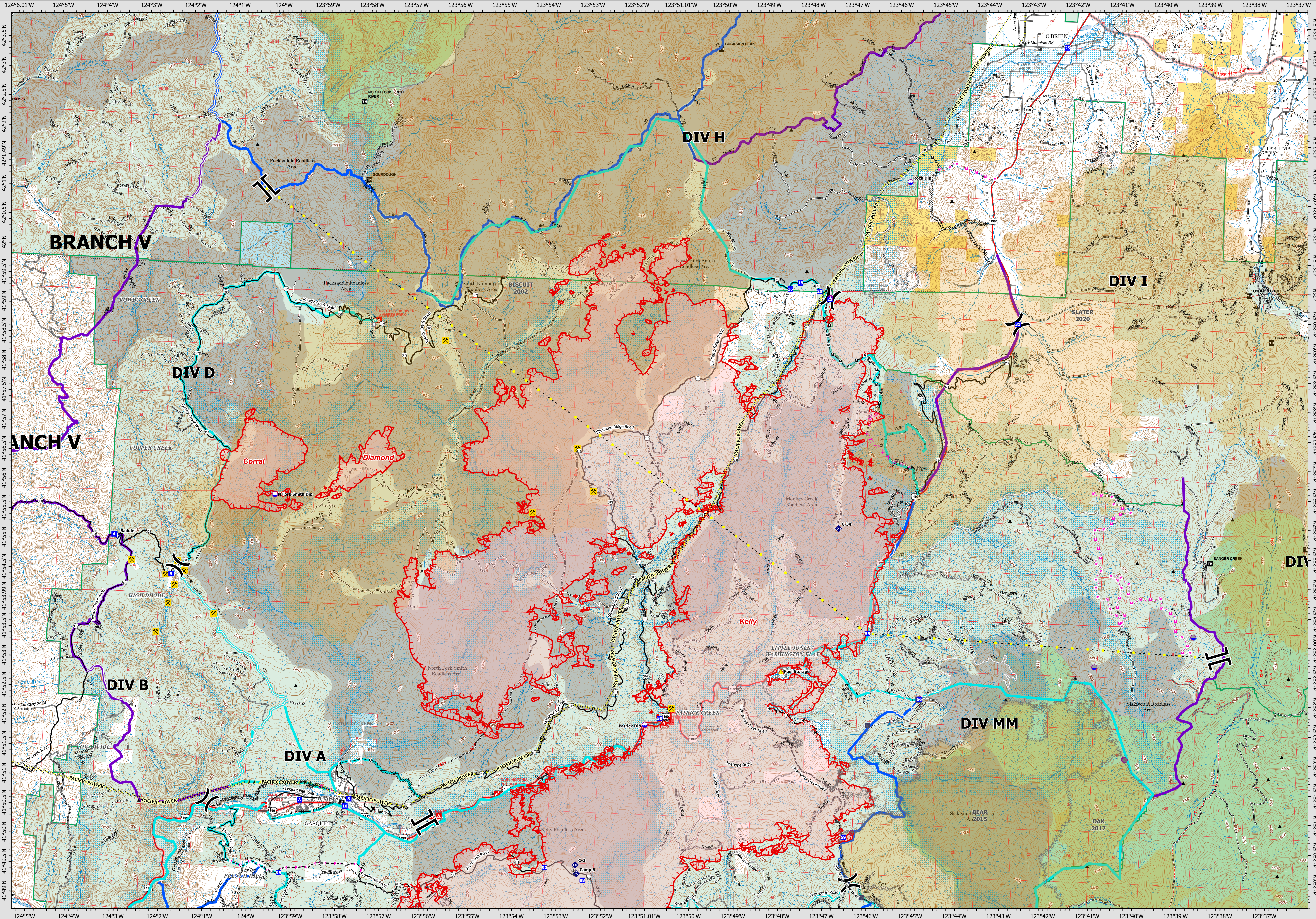


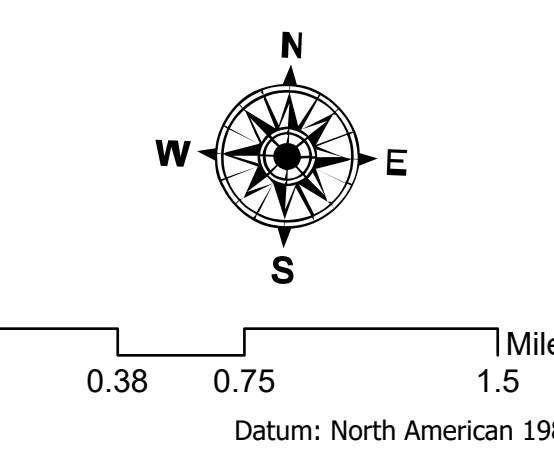
8/24/2023

OPERATIONS - BRANCH V



**Smith River Complex - South**  
 CA-SRF-000968  
 8/24/2023  
 52,563 acres  
 Updated 08/23/23 @ 2100

- |                                   |                                 |                |                       |                      |                |
|-----------------------------------|---------------------------------|----------------|-----------------------|----------------------|----------------|
| Smith River Cx Wildfire Perimeter | Planned Hand Line               | Dip Site       | Mobile Weather Unit   | Strategic Action     | Gravel or Dirt |
| Fire History                      | Planned Mixed Construction Line | Helispot       | Repeater              | Primary              | 4x4            |
| Uncontained                       | Planned Road as Line            | Division Break | Hazard                | Alternate            | Closed         |
| Completed Dozer Line              | Access or Improved Road         | Branch Break   | Historic Dip Site     | Contingency          |                |
| Completed Hand Line               | Highlighted Feature             | Drop Point     | Historic Helispot     | Other (see comments) |                |
| Completed Mixed Construction Line | Transmission Lines              | Camp           | Historic Helibase     | Roads                |                |
| Completed Road as Line            | Historic Dozer Line             | Fire Station   | Historic Drop Point   | Roads                |                |
| Planned Dozer Line                | Vertical Mine Openings          | Bridge         | Historic Water Source | Paved or Gravel      |                |



Author Name Updated: 8/24/2023 0354