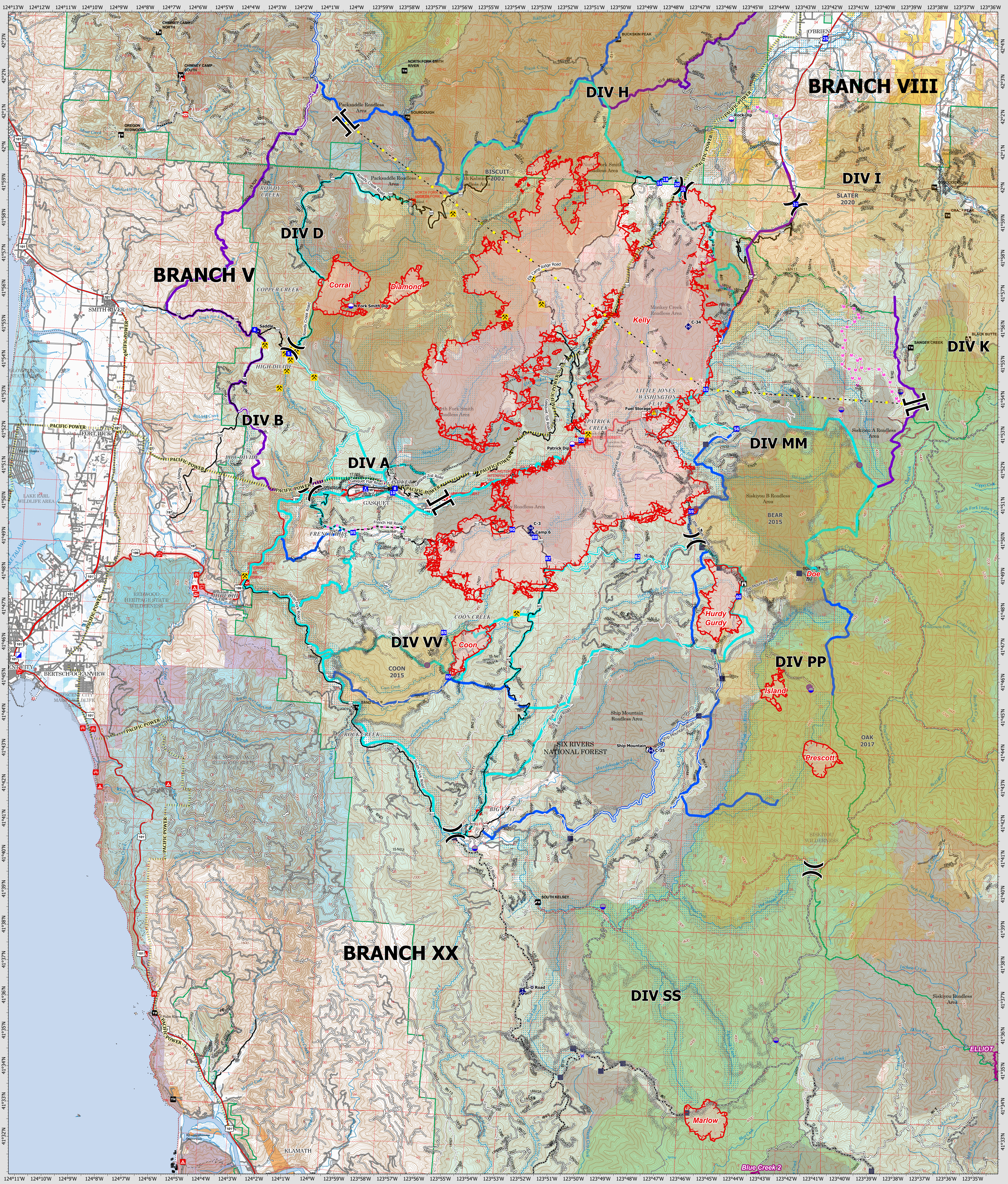


OPERATIONS - OVERVIEW



Smith River Complex - South

CA-SRF-000968
8/24/23

52,563 acres
Updated 08/23/23 @ 2100

- | | | | |
|-----------------------------------|-------------------------|-----------------------|----------------------|
| Smith River Cx Wildfire Perimeter | Planned Road as Line | Lookout | Alternate |
| Other Incident Wildfire Perimeter | Access or Improved Road | Fire Station | Contingency |
| Fire History | Highlighted Feature | Bridge | Other (see comments) |
| Contained | Transmission Lines | Mobile Weather Unit | Roads |
| Uncontained | Historic Dozer Line | Repeater | Roads |
| Uncontained (OTHER) | Vertical Mine Openings | Hazard | Paved Road |
| Completed Dozer Line | Dip Site | Historic Dip Site | Paved or Gravel |
| Completed Hand Line | Helispot | Historic Helibase | Gravel or Dirt |
| Completed Mixed Construction Line | Division Break | Historic Drop Point | 4x4 |
| Completed Road as Line | Branch Break | Historic Water Source | Closed |
| Planned Dozer Line | Incident Command Post | Strategic Action | |
| Planned Hand Line | Drop Point | | |
| Planned Mixed Construction Line | Camp | | |

