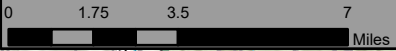


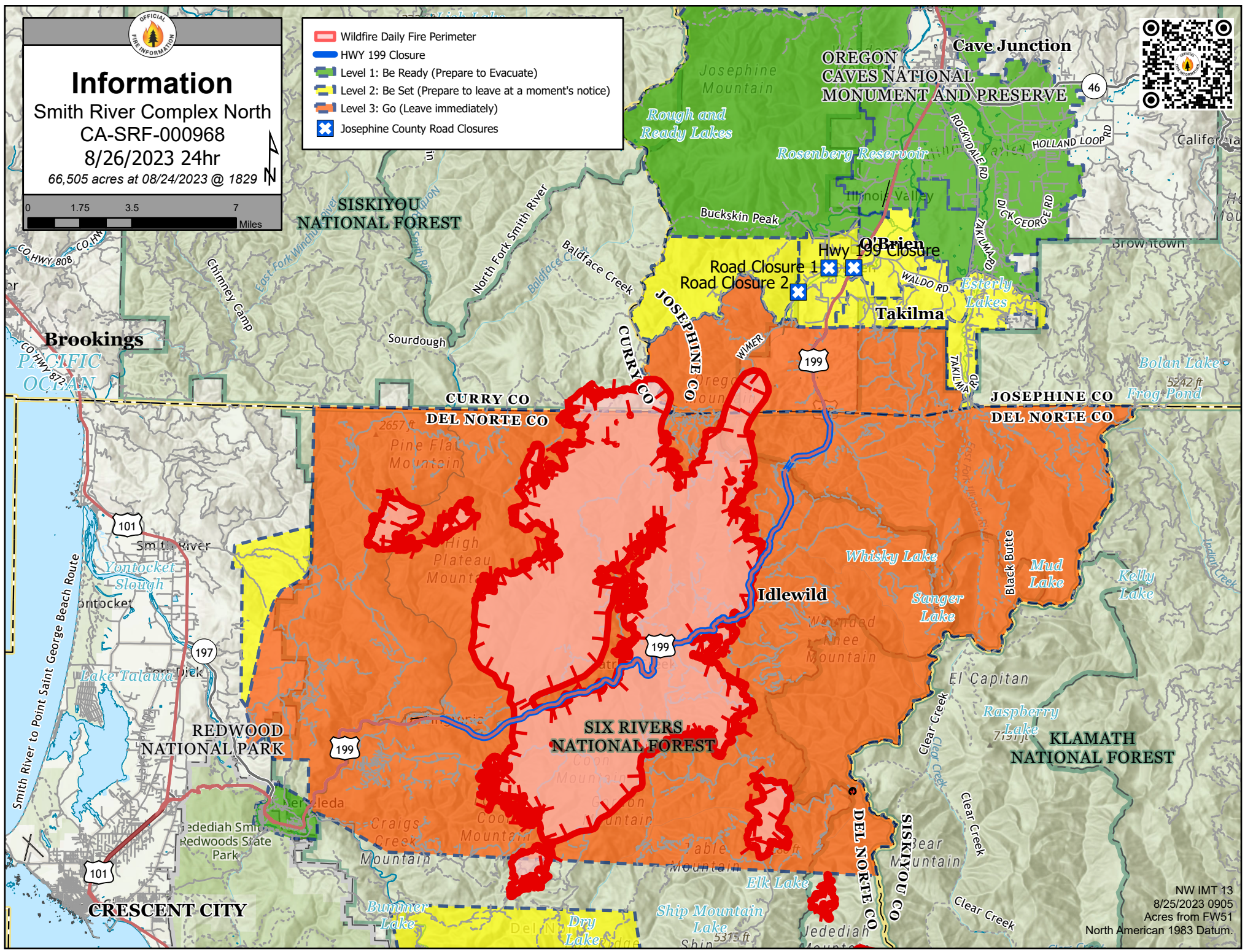


Information

Smith River Complex North
CA-SRF-000968
8/26/2023 24hr
66,505 acres at 08/24/2023 @ 1829



- Wildfire Daily Fire Perimeter
- HWY 199 Closure
- Level 1: Be Ready (Prepare to Evacuate)
- Level 2: Be Set (Prepare to leave at a moment's notice)
- Level 3: Go (Leave immediately)
- Josephine County Road Closures



NW IMT 13
8/25/2023 0905
Acres from FW51
North American 1983 Datum.