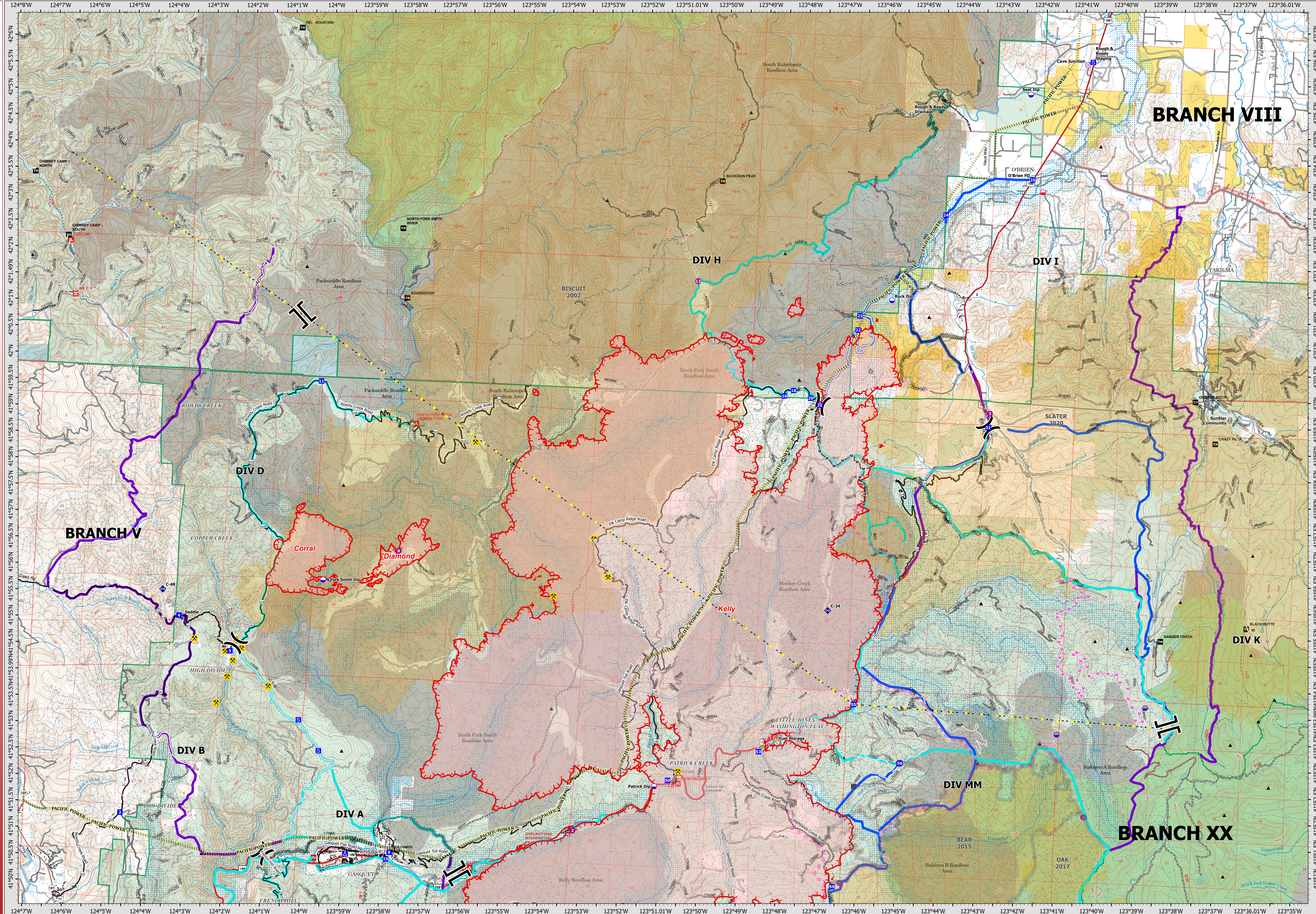


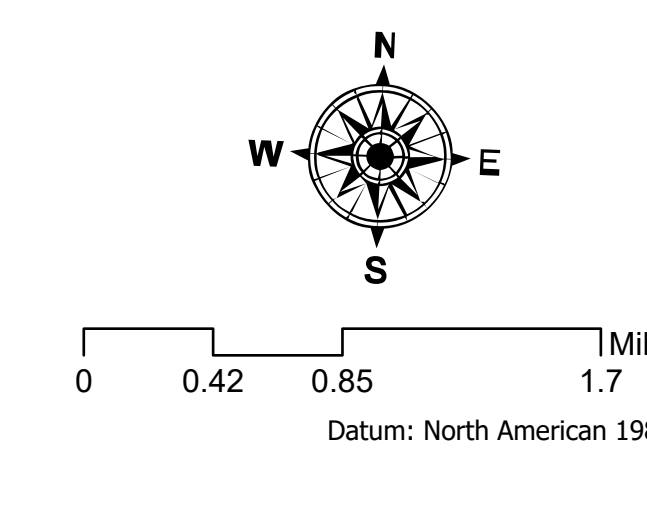
08/26/2023

OPERATIONS - BRANCH V



Smith River Complex - South
 CA-SRF-000968
 8/26/23
 67,009 acres
 Updated 08/25/23 @ 1245

<ul style="list-style-type: none"> Smith River Cx Wildfire Perimeter Fire History Uncontained Completed Dozer Line Completed Hand Line Completed Mixed Construction Line Completed Road as Line Planned Dozer Line Planned Fuel Break 	<ul style="list-style-type: none"> Planned Hand Line Planned Mixed Construction Line Planned Road as Line Access or Improved Road Highlighted Feature Transmission Lines Historic Dozer Line Historic Dozer Line Planned Dozer Line Vertical Mine Openings 	<ul style="list-style-type: none"> Dip Site Mobile Retardant Base Helispot Helibase Division Break Branch Break Drop Point Camp Staging Area 	<ul style="list-style-type: none"> Value at Risk Gate Fire Station Bridge Mobile Weather Unit Repeater Hazard 	<ul style="list-style-type: none"> Peaks Historic Dip Site Historic Helispot Historic Helibase Historic Drop Point Historic Water Source 	<ul style="list-style-type: none"> Strategic Action Primary Alternate Contingency Needs Scouting 	<ul style="list-style-type: none"> Roads County Roads Paved or Gravel Gravel or Dirt 4x4 Closed 	<ul style="list-style-type: none"> Structure Triage Defensible - Stand Alone Defensible - Prep and Hold Non-Defensible - Prep and Leave Non-Defensible - Rescue Drive-By Unknown
--	--	---	--	--	---	---	--



Author Name Updated: 8/26/2023 09:05