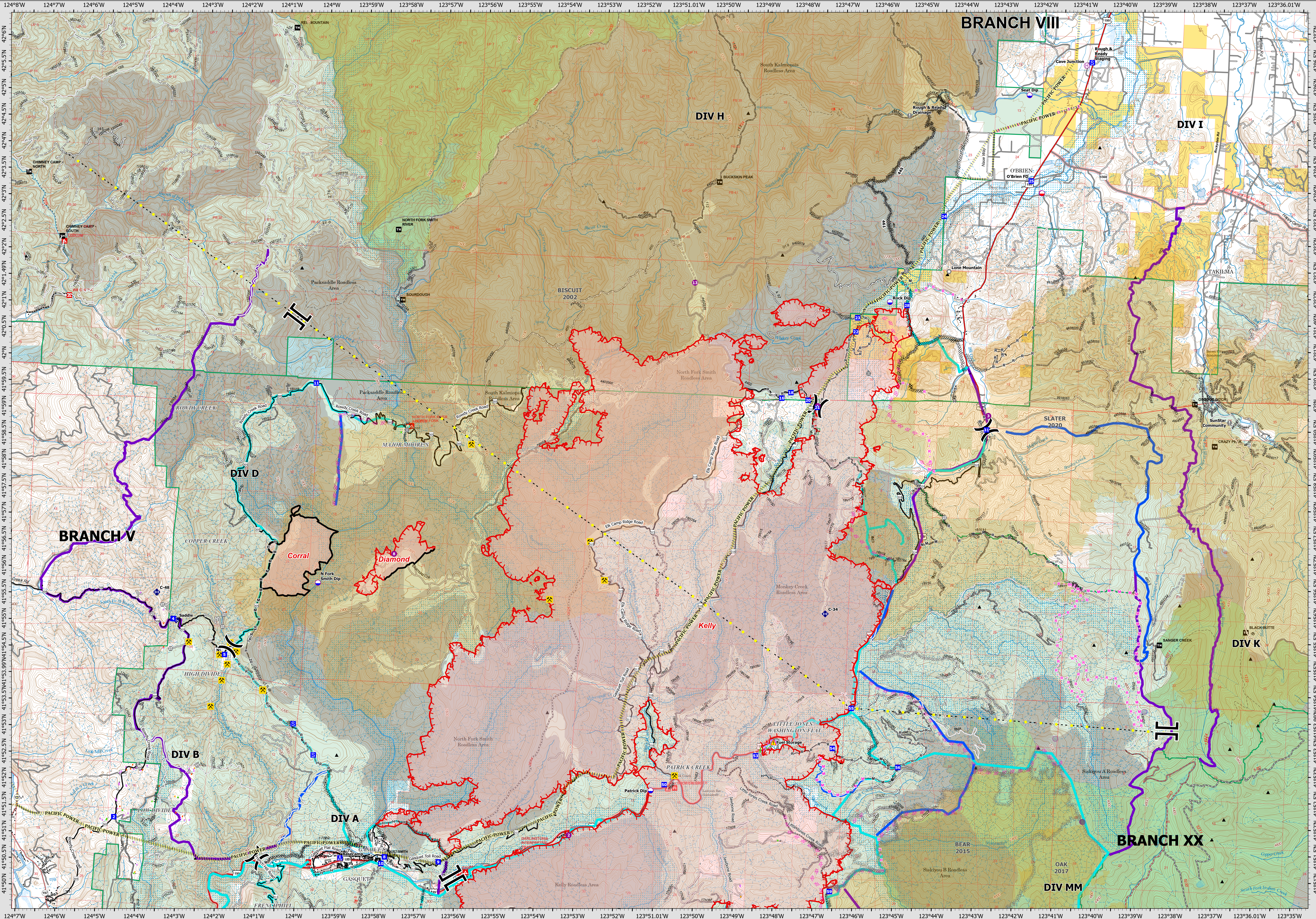


08/28/2023

OPERATIONS - BRANCH V

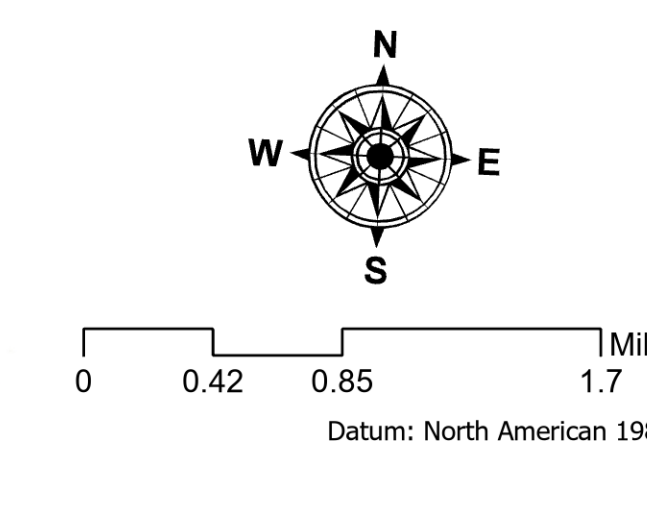


Smith River Complex - South

CA-SRF-000968
08/28/2023

70,716 acres
Acres updated 8/27/2023 2100

- Smith River Cx Wildfire Perimeter
- Fire History
- Contained
- Uncontained
- Completed Dozer Line
- Completed Fuel Break
- Completed Hand Line
- Completed Mixed Construction Line
- Completed Road as Line
- Planned Dozer Line
- Planned Hand Line
- Planned Mixed Construction Line
- Planned Road as Line
- Planned Secondary Line
- Access or Improved Road
- Highlighted Feature
- Transmission Lines
- Historic Dozer Line
- Vertical Mine Openings
- Dip Site
- Mobile Retardant Base
- Helispot
- Helibase
- Division Break
- Branch Break
- Drop Point
- Camp
- Completed Mixed Construction Line
- Completed Road as Line
- Planned Dozer Line
- Landmark
- Gate
- Fire Station
- Bridge
- Mobile Weather Unit
- Repeater
- Hazard
- Peaks
- Historic Dip Site
- Historic Helispot
- Strategic Action
- Primary
- Alternate
- Contingency
- Needs Scouting
- Roads
- County Roads
- Paved or Gravel
- Gravel or Dirt
- 4x4
- Closed
- Structure Triage
- Defensible - Stand Alone
- Defensible - Prep and Hold
- Non-Defensible - Prep and Leave
- Non-Defensible - Rescue Drive-By
- Unknown



Author Name Updated: 8/27/2023 2222