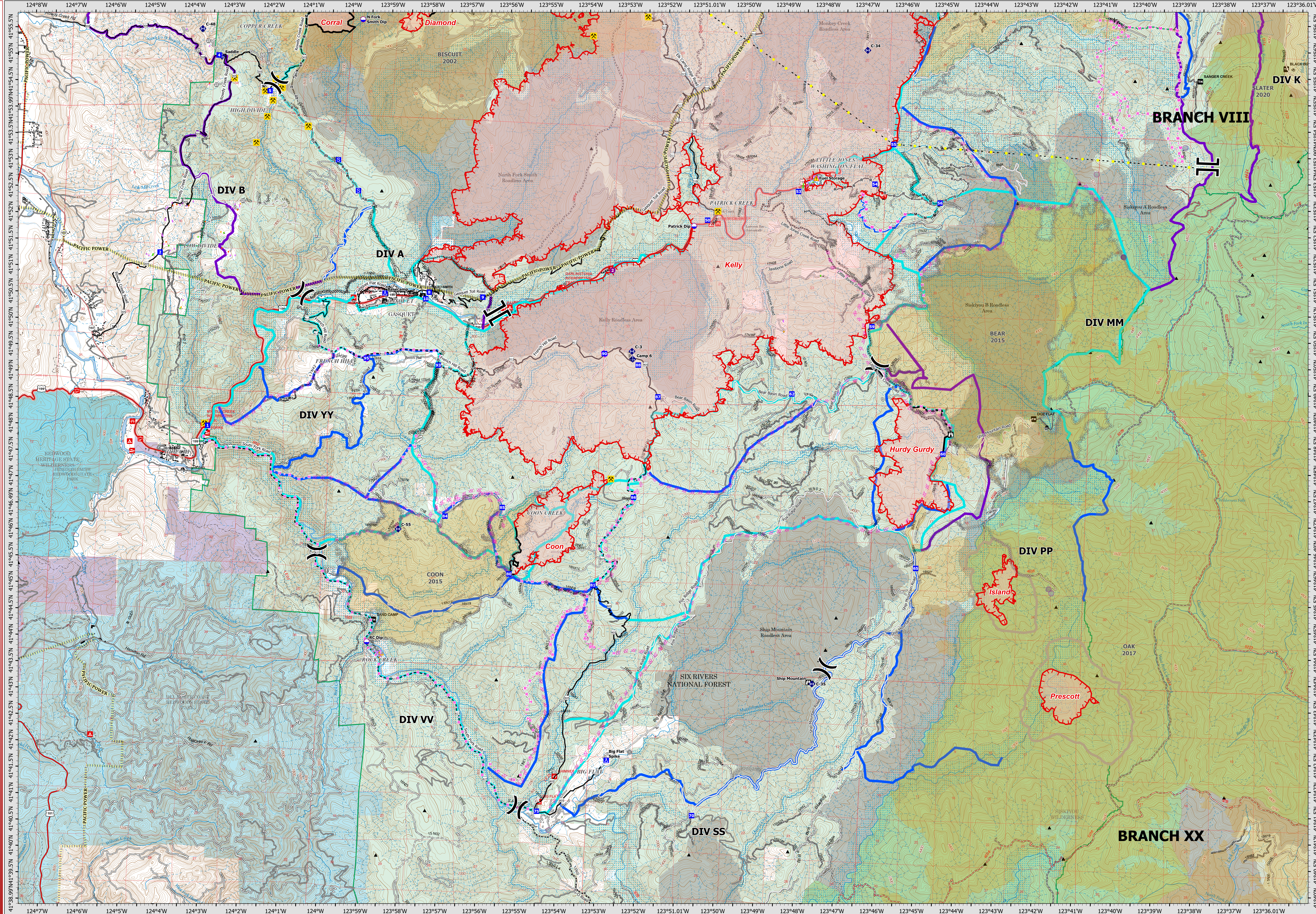


08/28/2023

OPERATIONS - BRANCH XX

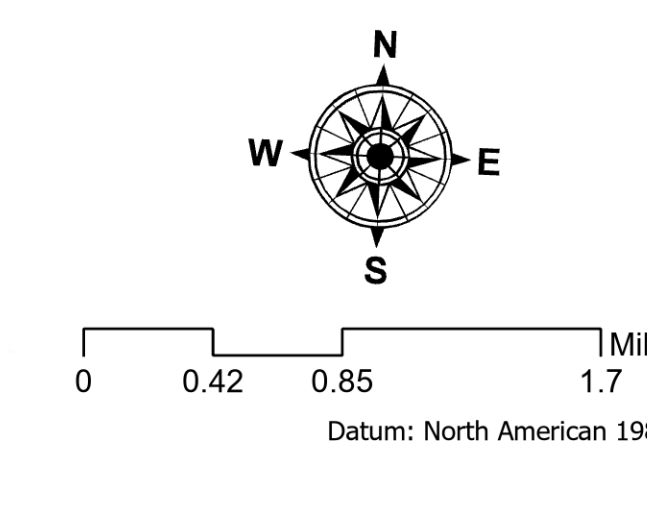


### Smith River Complex - South

CA-SRF-000968  
08/28/2023

70,716 acres  
Acres updated 8/27/2023 2100

Smith River Cx Wildfire Perimeter	Planned Hand Line	Dip Site	Bridge	Peaks	Strategic Action	Roads	Structure Triage
Fire History	Planned Mixed Construction Line	Helispot	Mobile Weather Unit	Historic Dip Site	Primary	County Roads	Defensible - Stand Alone
Contained	Planned Road as Line	Repeater	Hazard	Historic Helispot	Alternate	Paved Road	Defensible - Prep and Hold
Uncontained	Access or Improved Road	Branch Break	Value at Risk	Historic Dozer Line	Contingency	Gravel or Dirt	Non-Defensible - Prep and Leave
Completed Dozer Line	Highlighted Feature	Drop Point	Gate	Vertical Mine Openings	Needs Scouting	4x4	Non-Defensible - Rescue Drive-By
Completed Fuel Break	UAS Launch and Recovery Zone	Camp			Closed	Closed	Unknown
Completed Hand Line	Transmission Lines	Staging Area					
Completed Mixed Construction Line	Historic Dozer Line	Lookup					
Completed Road as Line	Vertical Mine Openings	Gate					
Planned Dozer Line							



Author Name Updated: 8/27/2023 2229