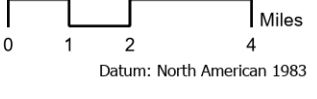


Smith River Complex - South

CA-SRF-000968
08/28/2023

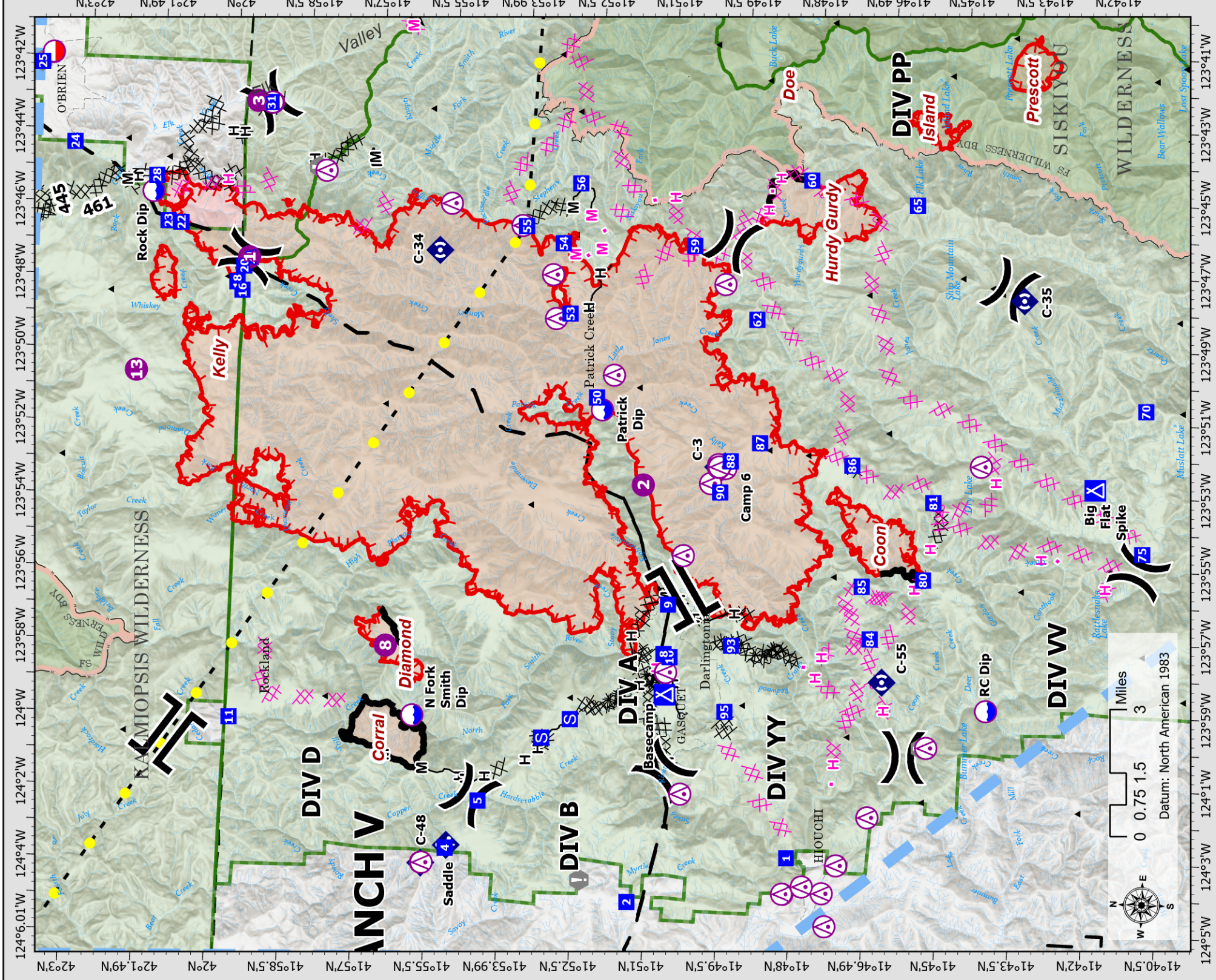
70,716 acres
updated

- | | | |
|-----------------------------------|---------------------------------|-----------------------|
| Smith River Cx Fire Perimeter | Planned Hand Line | Division Break |
| Other Incident Fire Perimeter | Planned Mixed Construction Line | Branch Break |
| Contained | Highlighted Feature | Incident Command Post |
| Uncontained | UAS Launch and Recovery Zone | Drop Point |
| Other Uncontained | Temporary Flight Restriction | Camp |
| Transmission Lines | Summit; Gap | Staging Area |
| Completed Dozer Line | Aerial Hazard | Value at Risk |
| Completed Fuel Break | Dip Site | Mobile Weather Unit |
| Completed Hand Line | Mobile Retardant Base | Repeater |
| Completed Mixed Construction Line | Helispot | |
| Planned Dozer Line | Helibase | |



| Point Type | Label | Latitude | Longitude | Elevation |
|------------|------------------|---------------|----------------|-----------|
| Camp | Basecamp | 41° 50.755' N | 123° 58.898' W | |
| Camp | Big Flat Spike | 41° 42.082' N | 123° 52.831' W | |
| Dip Site | N Fork Smith Dip | 41° 55.920' N | 123° 59.741' W | |
| Dip Site | Patrick Dip | 41° 52.268' N | 123° 51.165' W | |
| Dip Site | RC Dip | 41° 44.143' N | 123° 58.995' W | 345 |
| Dip Site | Rock Dip | 42° 01.650' N | 123° 45.641' W | |
| Dip Site | Seat Dip | 42° 05.650' N | 123° 42.329' W | |
| Drop Point | 1 | 41° 48.111' N | 124° 03.234' W | |
| Drop Point | 10 | 41° 50.682' N | 123° 57.866' W | |
| Drop Point | 11 | 41° 59.680' N | 123° 59.992' W | 2331 |
| Drop Point | 16 | 41° 59.757' N | 123° 48.268' W | |
| Drop Point | 18 | 41° 59.868' N | 123° 48.042' W | |
| Drop Point | 2 | 41° 51.352' N | 124° 04.619' W | |
| Drop Point | 20 | 41° 59.736' N | 123° 47.601' W | |
| Drop Point | 22 | 42° 01.062' N | 123° 46.472' W | |
| Drop Point | 23 | 42° 01.330' N | 123° 46.438' W | |
| Drop Point | 24 | 42° 03.304' N | 123° 44.365' W | |
| Drop Point | 25 | 42° 04.033' N | 123° 42.203' W | |
| Drop Point | 28 | 42° 01.599' N | 123° 45.210' W | |
| Drop Point | 31 | 41° 59.312' N | 123° 43.086' W | |
| Drop Point | 4 | 41° 55.131' N | 124° 03.341' W | 2083 |
| Drop Point | 5 | 41° 54.497' N | 124° 02.015' W | |
| Drop Point | 50 | 41° 52.389' N | 123° 50.831' W | |
| Drop Point | 53 | 41° 53.001' N | 123° 48.564' W | |
| Drop Point | 54 | 41° 53.197' N | 123° 46.643' W | |
| Drop Point | 55 | 41° 53.966' N | 123° 46.210' W | |
| Drop Point | 56 | 41° 52.888' N | 123° 44.982' W | |
| Drop Point | 59 | 41° 50.498' N | 123° 46.576' W | |
| Drop Point | 60 | 41° 48.137' N | 123° 44.657' W | |
| Drop Point | 62 | 41° 49.161' N | 123° 48.529' W | |

| Point Type | Label | Latitude | Longitude | Elevation |
|-----------------------|---------------|---------------|----------------|-----------|
| Drop Point | 65 | 41° 45.951' N | 123° 45.231' W | |
| Drop Point | 70 | 41° 41.102' N | 123° 50.629' W | |
| Drop Point | 75 | 41° 41.065' N | 123° 54.537' W | |
| Drop Point | 8 | 41° 50.808' N | 123° 57.784' W | |
| Drop Point | 80 | 41° 45.535' N | 123° 55.480' W | |
| Drop Point | 81 | 41° 45.390' N | 123° 53.350' W | |
| Drop Point | 84 | 41° 46.578' N | 123° 57.152' W | |
| Drop Point | 85 | 41° 46.787' N | 123° 55.718' W | |
| Drop Point | 86 | 41° 47.081' N | 123° 52.416' W | |
| Drop Point | 87 | 41° 49.004' N | 123° 51.903' W | |
| Drop Point | 88 | 41° 49.590' N | 123° 52.432' W | |
| Drop Point | 9 | 41° 50.757' N | 123° 56.427' W | |
| Drop Point | 90 | 41° 49.781' N | 123° 53.296' W | |
| Drop Point | 93 | 41° 49.432' N | 123° 57.480' W | |
| Drop Point | 95 | 41° 49.508' N | 123° 59.299' W | |
| Helibase | Cave Junction | 42° 06.250' N | 123° 40.917' W | |
| Helispot | 1 | 41° 59.635' N | 123° 47.356' W | 3500 |
| Helispot | 13 | 42° 01.867' N | 123° 50.567' W | 4000 |
| Helispot | 2 | 41° 51.365' N | 123° 53.178' W | 1000 |
| Helispot | 3 | 41° 59.577' N | 123° 43.053' W | 1700 |
| Helispot | 8 | 41° 56.525' N | 123° 57.858' W | 3000 |
| Incident Command Post | ICP | 41° 45.636' N | 124° 11.704' W | |
| Mobile Weather Unit | Camp 6 | 41° 49.700' N | 123° 52.578' W | |
| Mobile Weather Unit | G-O Road | 41° 36.715' N | 123° 52.196' W | |
| Mobile Weather Unit | Saddle | 41° 55.110' N | 124° 03.264' W | |
| Repeater | C-3 | 41° 49.845' N | 123° 52.604' W | |
| Repeater | C-34 | 41° 55.726' N | 123° 46.958' W | |
| Repeater | C-35 | 41° 43.686' N | 123° 47.732' W | |
| Repeater | C-48 | 41° 55.617' N | 124° 03.780' W | |
| Repeater | C-55 | 41° 46.298' N | 123° 58.317' W | 2791 |



| Frequencies | TX | Tone | RX | Tone | AM / FM |
|---------------------------|----------|-------------|----------|------------|---------|
| Command-South | 168.0750 | (T3) 131.8 | 170.4250 | (T3) 131.8 | FM |
| Command-North Bowlin | 162.6125 | (T31) 186.2 | 170.6000 | (T17) 67.0 | FM |
| Command-North Fiddler | 162.6125 | (T30) 179.9 | 170.5000 | (T17) 67.0 | FM |
| AIR / GROUND - TACTICAL | 169.4875 | 0.0000 | 169.4875 | 0.0000 | FM |
| AIR/AIR ROTARY WING | 123.7250 | 0.0000 | 123.7250 | 0.0000 | AM |
| TFR | 126.0750 | 0.000 | 126.0750 | 0.0000 | AM |
| AIR TACTICS | 173.7000 | 0.0000 | 173.7000 | 0.0000 | FM |
| AIR/GROUND COMMAND | 173.8500 | 0.0000 | 173.8500 | 0.0000 | AM |
| VMED 29-MEDICAL North | 155.3475 | 156.7 | 155.3475 | 156.7 | AM |
| TOLC | 168.1375 | 0.0000 | 168.1375 | 0.0000 | FM |
| CALCORD - MEDICAL South | 156.0750 | 156.7 (6) | 156.0750 | 156.7 (6) | FM |
| AIRGUARD - Emergency Only | 166.6250 | 110.9 (1) | 166.6250 | 0.0000 | FM |