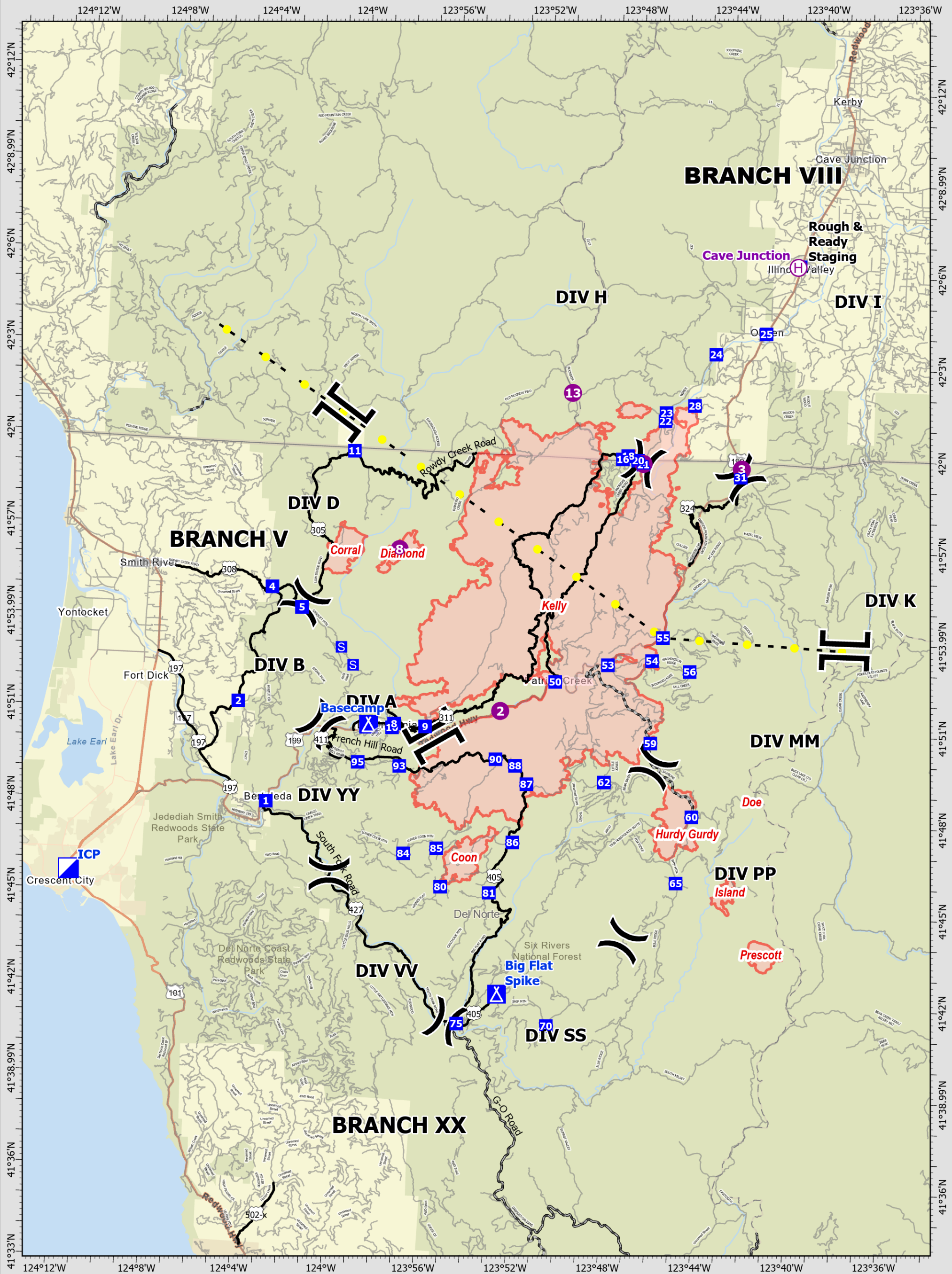


TRANSPORTATION

08/28/2023

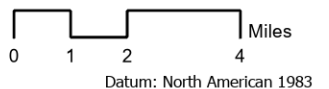
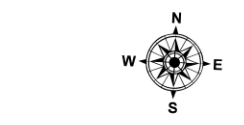


Smith River Complex - South

CA-SRF-000968
08/28/2023

70,716 acres
Updated 8/27/2023 2100

- Wildfire Daily Fire Perimeter
- Highlighted Feature
- County Road
- Paved or Gravel
- Paved
- Helispot
- Helibase
- Division Break
- Branch Break
- Incident Command Post
- Drop Point
- Camp
- Staging Area
- BranchVIII_Label



Datum: North American 1983

Author Name Updated: 8/27/2023 2259