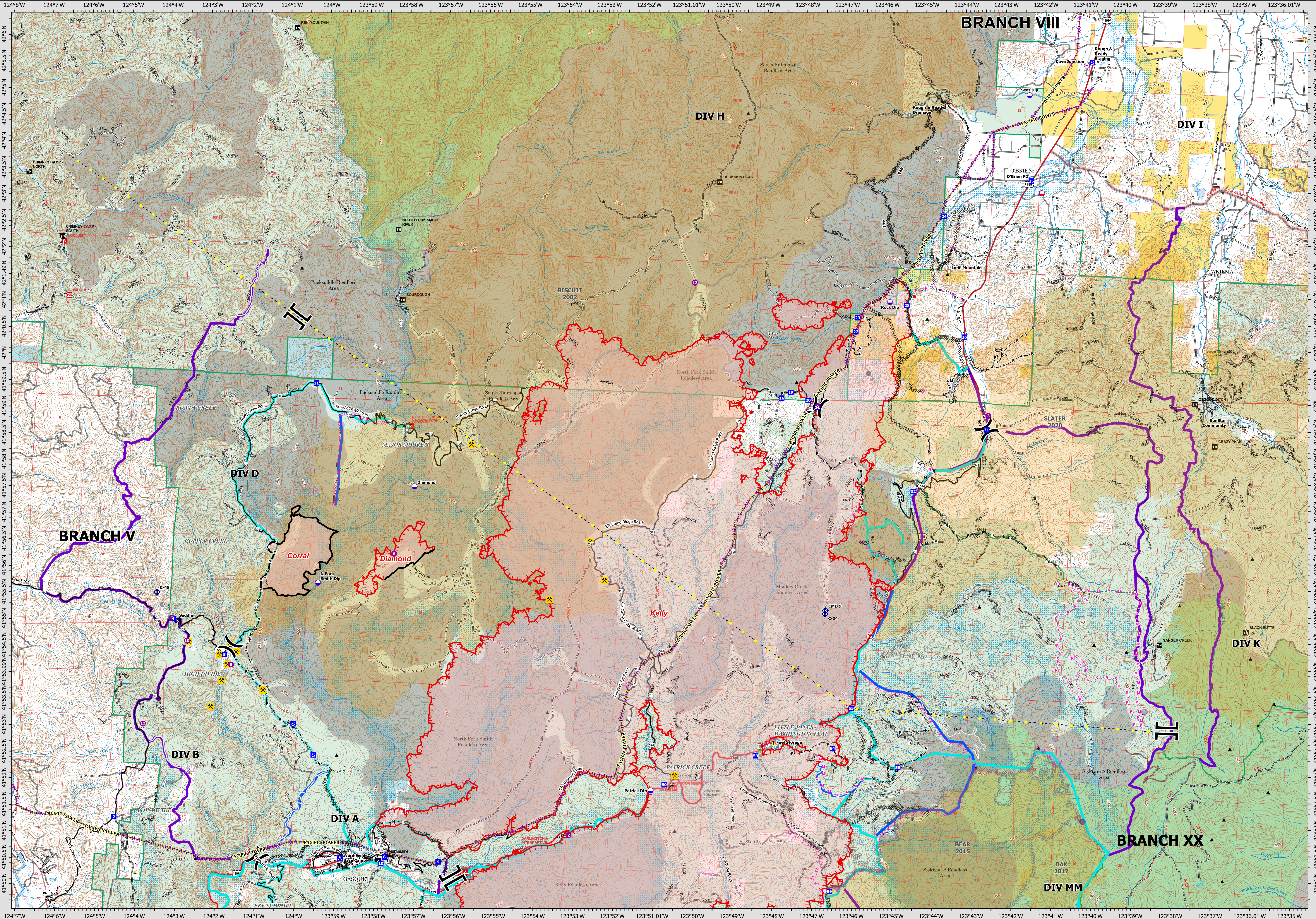


08/29/2023

OPERATIONS - BRANCH V



**Smith River Complex - South**

CA-SRF-000968  
08/29/2023

73,799 acres  
Acres updated 8/28/2023 1700

Smith River Cx Wildfire Perimeter	Completed Road as Line	Aerial Hazard	Dip Site	Staging Area	Hazard	Needs Scouting Roads	Structure Triage
Fire History	Planned Dozer Line	Transmission Lines	Mobile Retardant Base	Value at Risk	Peaks	County Roads	Defensible - Stand Alone
Contained	Planned Hand Line	Historic Dozer Line	Helispot	Landmark	Historic Dip Site	Paved or Gravel	Defensible - Prep and Hold
Uncontained	Planned Mixed Construction Line	Vertical Mine Openings	Helibase	Gate	Historic Helispot	Gravel or Dirt	Non-Defensible - Prep and Leave
Completed Dozer Line	Planned Road as Line		Division Break	Fire Station	Strategic Action	4x4	Non-Defensible - Rescue Drive-By
Completed Fuel Break	Planned Secondary Line		Drop Point	Bridge	Primary	Closed	Unknown
Completed Hand Line	Access or Improved Road		Camp	Mobile Weather Unit	Alternate		
Completed Mixed Construction Line	Highlighted Feature			Repeater	Contingency		

Datum: North American 1983

Author Name Updated: 8/28/2023 2300