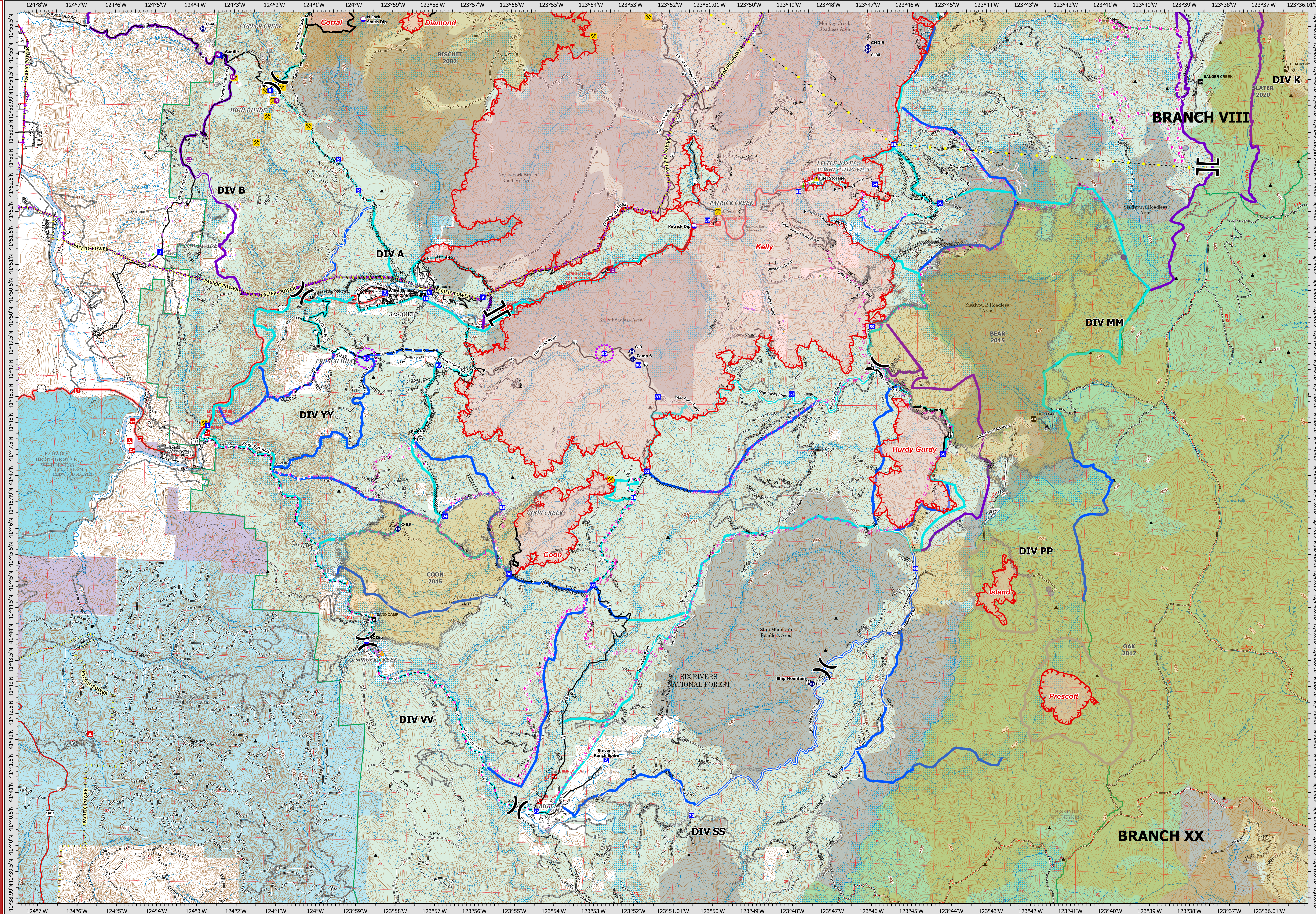


08/29/2023

OPERATIONS - BRANCH XX

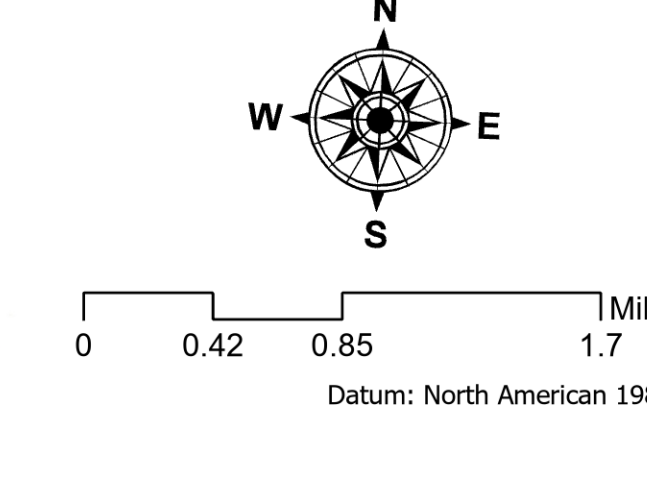


Smith River Complex - South

CA-SRF-000968
08/29/2023

73,799 acres
Acres updated 8/28/2023 1700

Smith River Cx Wildfire Perimeter	Completed Road as Line	UAS Launch and Recovery Zone	Dip Site	Value at Risk	Peaks	Strategic Action	Roads	Structure Triage
Fire History	Planned Dozer Line	Transmission Lines	Helispot	Gate	Historic Dip Site	Primary	County Roads	Defensible - Stand Alone
Contained	Planned Hand Line	Historic Dozer Lines	Division Break	Bridge	Historic Helispot	Alternate	Paved Road	Defensible - Prep and Hold
Uncontained	Planned Mixed Construction Line	Vertical Mine Openings	Branch Break	Mobile Weather Unit	Contingency	Paved or Gravel	Gravel or Dirt	Non-Defensible - Prep and Leave
Completed Dozer Line	Planned Road as Line	Access or Improved Road	Drop Point	Repeater	Needs Scouting	Gravel or Dirt	4x4	Non-Defensible - Rescue Drive-By
Completed Fuel Break	Highlighted Feature	Aerial Hazard	Staging Area	Hazard	Closed	Closed	Closed	Unknown
Completed Hand Line			Lookout					



Author Name Updated: 8/28/2023 2323