

# Evacuations

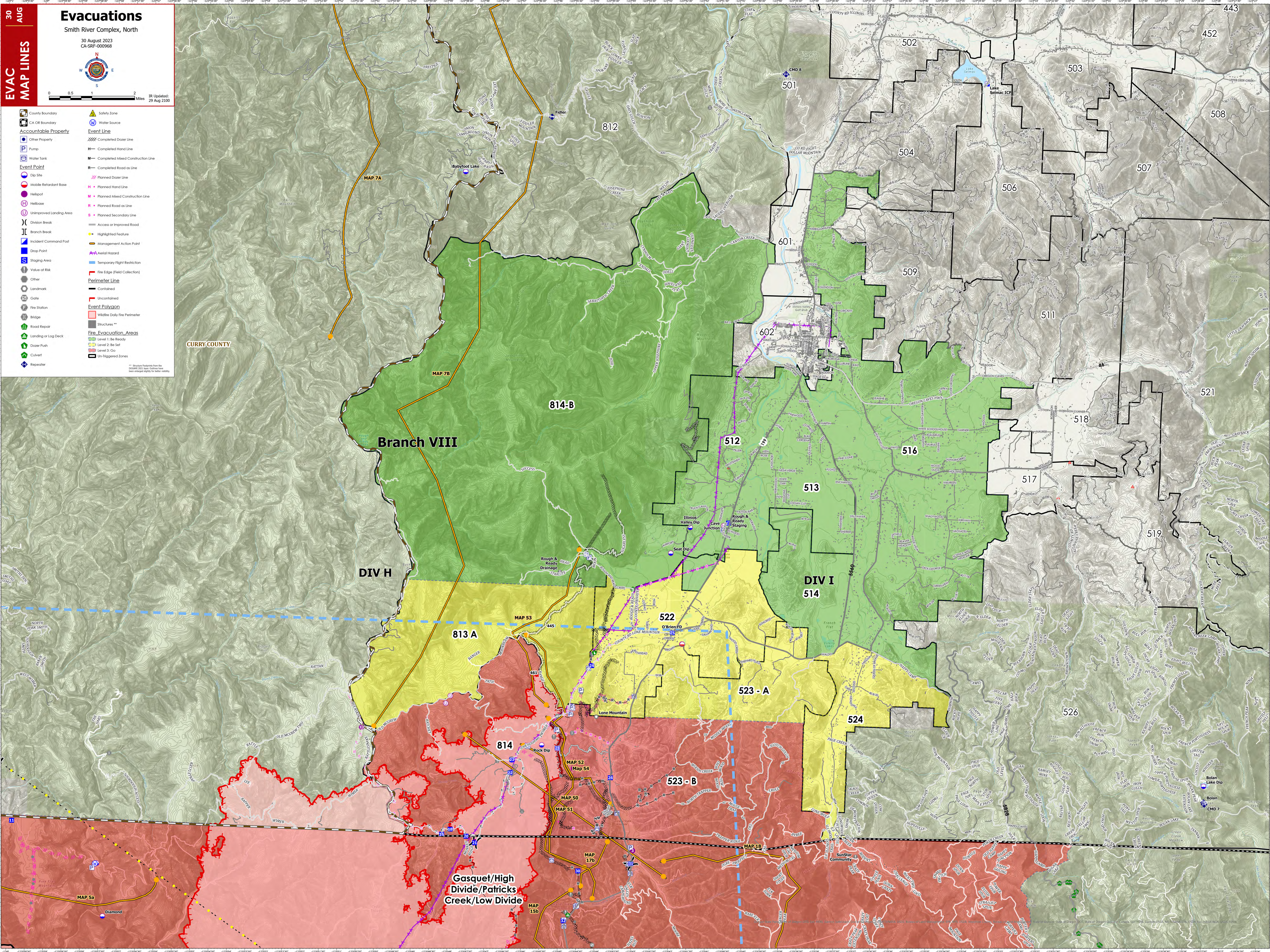
Smith River Complex, North

30 August 2023  
CA-SRF-000968



IR Updated: 29 Aug 2100

- County Boundary
- CA OR Boundary
- Accountable Property
- Other Property
- Pump
- Water Tank
- Event Point
- Dip Site
- Mobile Retardant Base
- Helipad
- Helibase
- Unimproved Landing Area
- Division Break
- Branch Break
- Incident Command Post
- Drop Point
- Staging Area
- Value of Risk
- Other
- Landmark
- Gate
- Fire Station
- Bridge
- Road Repair
- Landing or Log Deck
- Doser Push
- Culvert
- Repeater
- Safety Zone
- Water Source
- Event Line
- Completed Doser Line
- Completed Hand Line
- Completed Mixed Construction Line
- Completed Road as Line
- Planned Doser Line
- Planned Hand Line
- Planned Mixed Construction Line
- Planned Road as Line
- Planned Secondary Line
- Access or Improved Road
- Highlighted Feature
- Management Action Point
- Aerial Hazard
- Temporary Flight Restriction
- Fire Edge (Field Collection)
- Other
- Perimeter Line
- Contained
- Uncontained
- Event Polygon
- Wildfire Daily Fire Perimeter
- Structures \*\*
- Fire Evacuation Areas
- Level 1: Be Ready
- Level 2: Be Set
- Level 3: Go
- Un-triggered Zones



CURRY COUNTY

Branch VIII

DIV H

DIV I

Gasquet/High Divide/  
Creek/Low Divide