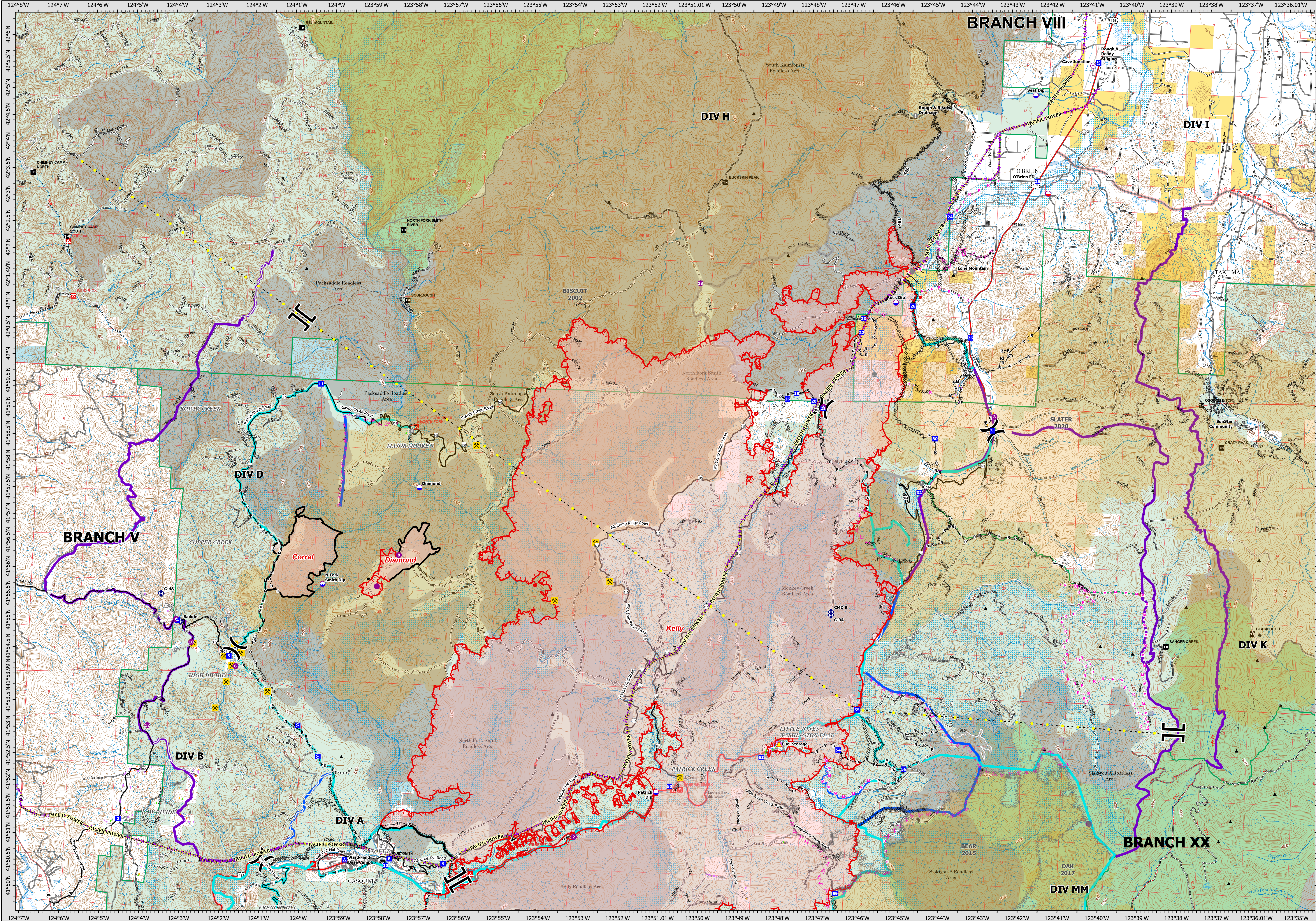


08/30/2023

OPERATIONS - BRANCH V



Smith River Complex - South
 CA-SRF-000968
 08/30/2023
 76,857 acres
 Acres updated 08/29/2023 2115

Smith River Cx Wildfire Perimeter	Completed Road as Line	Aerial Hazard	Helibase	Gate	Historic Dip Site	Structure Triage	County Roads
Fire History	Planned Dozer Line	Transmission Lines	Division Break	Fire Station	Historic Helispot	Defensible - Stand Alone	Paved or Gravel
Contained	Planned Hand Line	Historic Dozer Line	Branch Break	Bridge	Mobile Weather Unit	Defensible - Prep and Hold	Gravel or Dirt
Uncontained	Planned Mixed Construction Line	Peaks	Drop Point	Repeater	Hazard	Non-Defensible - Prep and Leave	4x4
Completed Dozer Line	Planned Road as Line	Vertical Mine Openings	Camp	Hazard	Dip Site	Non-Defensible - Rescue Drive-By	Closed
Completed Fuel Break	Planned Secondary Line	Access or Improved Road	Staging Area	Mobile Retardant Base	Helispot	Unknown	
Completed Hand Line	Highlighted Feature		Value at Risk	Landmark			
Completed Mixed Construction Line							

Miles: 0, 0.42, 0.85, 1.7
 Datum: North American 1983