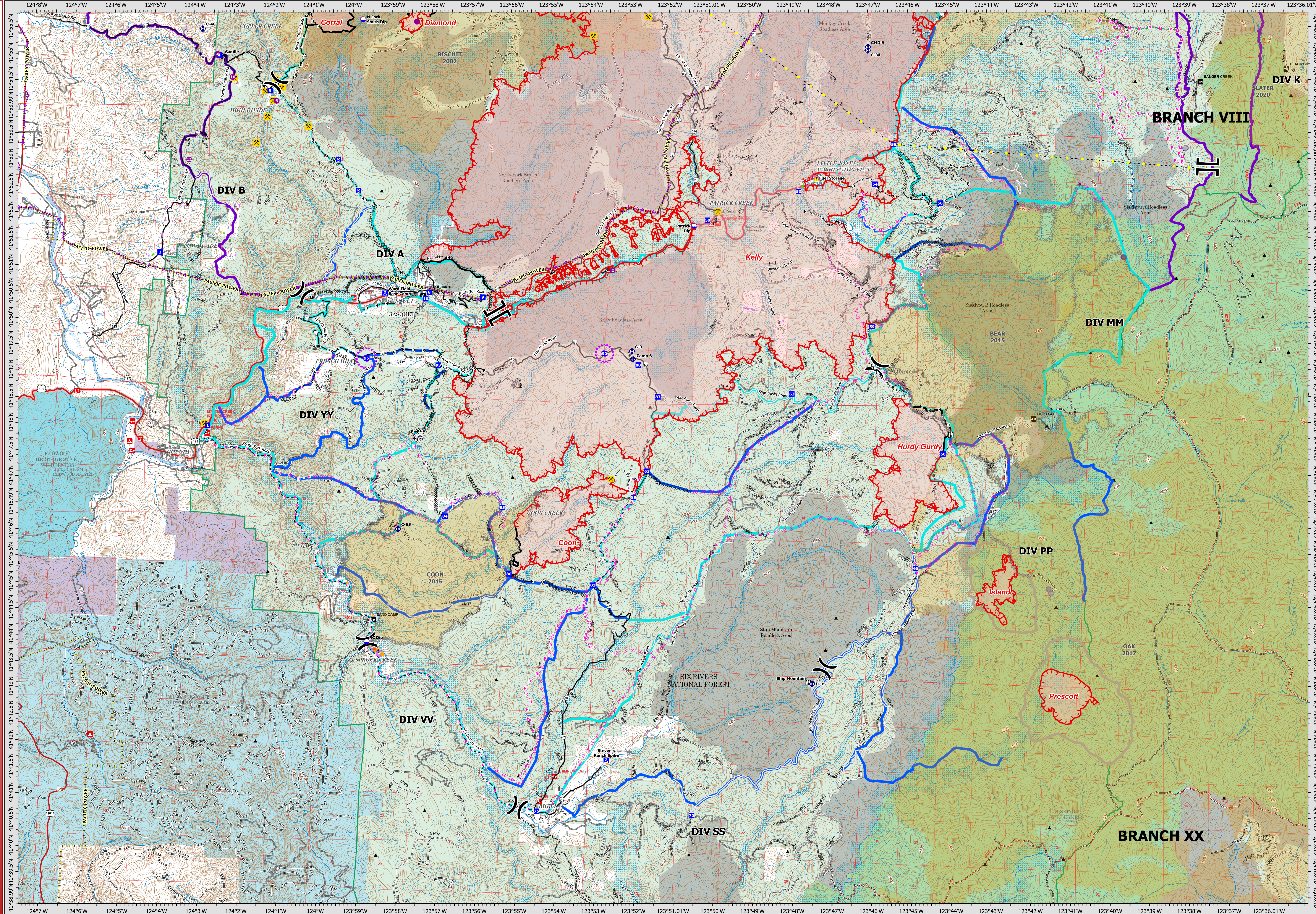


08/30/2023

OPERATIONS - BRANCH XX



**Smith River Complex - South**

CA-SRF-000968  
08/30/2023

76,857 acres  
Acres updated 08/29/2023 2115

Smith River Cx Wildfire Perimeter	Completed Road as Line	UAS Launch and Recovery Zone	Dip Site	Value at Risk	Peaks
Fire History	Planned Dozer Line	Transmission Lines	Helispot	Gate	Historic Dip Site
Contained	Planned Hand Line	Historic Dozer Line	Division Break	Bridge	Historic Helispot
Uncontained	Planned Mixed Construction Line	Vertical Mine Openings	Branch Break	Mobile Weather Unit	Contingency
Completed Dozer Line	Planned Road as Line	Access or Improved Road	Drop Point	Repeater	Needs Scouting
Completed Fuel Break	Completed Hand Line	Highlighted Feature	Staging Area	Hazard	County Roads
Completed Hand Line	Completed Mixed Construction Line	Aerial Hazard	Lookout		Paved Road
					Paved or Gravel
					Gravel or Dirt
					4x4
					Closed

**Structure Triage**

- Defensible - Stand Alone
- Defensible - Prep and Hold
- Non-Defensible - Prep and Leave
- Non-Defensible - Rescue Drive-By
- Unknown

0 0.42 0.85 1.7 Miles  
Datum: North American 1983

Author Name Updated: 8/29/2023 2345