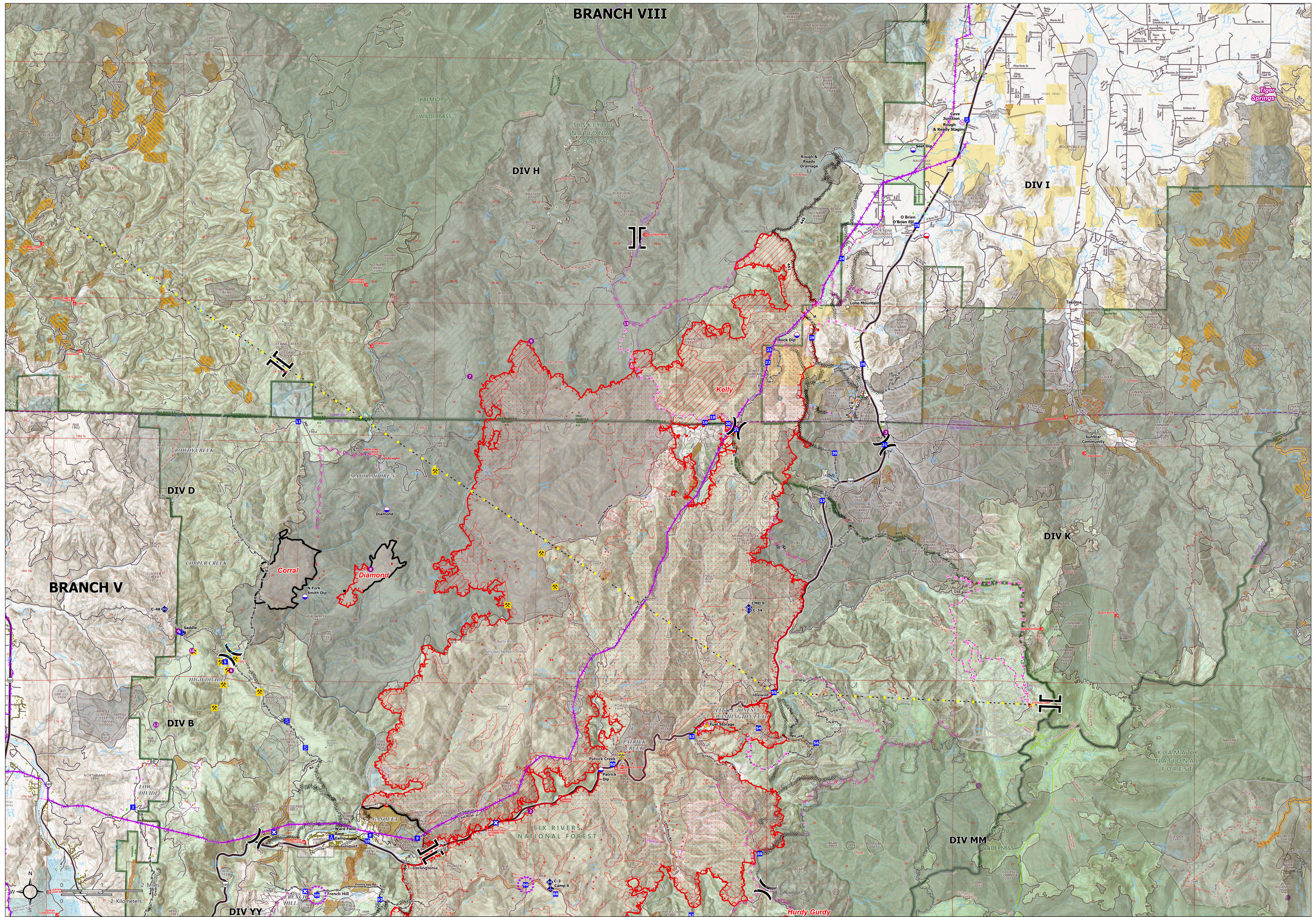


BRANCH VIII



OPERATIONS BRANCH V

Smith River Complex - South CA-SRF-000968
83,974 acres at 8/30/2023 2146 PDT
08/31/2023

144,000 - SW2 GIS - 8/31/2023 0639 - North American 1983 Datum, Lat Long Grid

Smith River Cx Wildfire Perimeter	Completed Hand Line	Rental Hazard	Closure	Hazard	Bureau of Land Management (BLM)	Non-Defensible - Rescue Drive-By
IR Heat Perimeter	Completed Mixed Construction Line	UAS Launch and Recovery Zone	Camp	Highway	State	Unknown
IR Intense Heat	Planned Dozer Line	Powerline	Staging Area	Local Connecting Road	US Forest Service (USFS)	Historic Dip Site
IR Scattered Heat	Planned Road as Line	Dip Site	Value at Risk	Local Road	Undetermined	Historic Helispot
IR Isolated Heat Source	Planned Hand Line	Mobile Retardant Base	Landmark	4WD	Vertical Mine Openings	Historic Dip Site
Possible IR Heat Source	Planned Mixed Construction Line	Helispot	Gate	Closed Road	Historic Dozer Line	Historic Helispot
Uncountained	Planned Road as Line	Helibase	Fire Station	Paved Road	Deferrable - Stand Alone	
Fire History	Planned Secondary Line	Access or Improved Road	Bridge	Gravel Road	Deferrable - Prep and Hold	
Completed Dozer Line	Highlighted Feature	Branch Break	Mobile Weather Unit	Primitive Road	Non-Defensible - Prep and Leave	
		Drop Point	Repeater	Closed Roads		
				Trail		
				National Designated Trail		
				Completed Timber Harvest (2003-present)		
				Integrated Interagency Fuel Treatments		
				Administrative FS Boundary		
				Ranger District Boundary		
				FS Roadless Area		
				State Boundary		
				County Boundary		
				Federal Wilderness Boundary		

