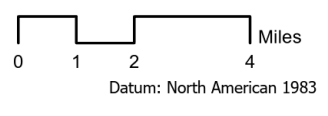


### Smith River Complex - South

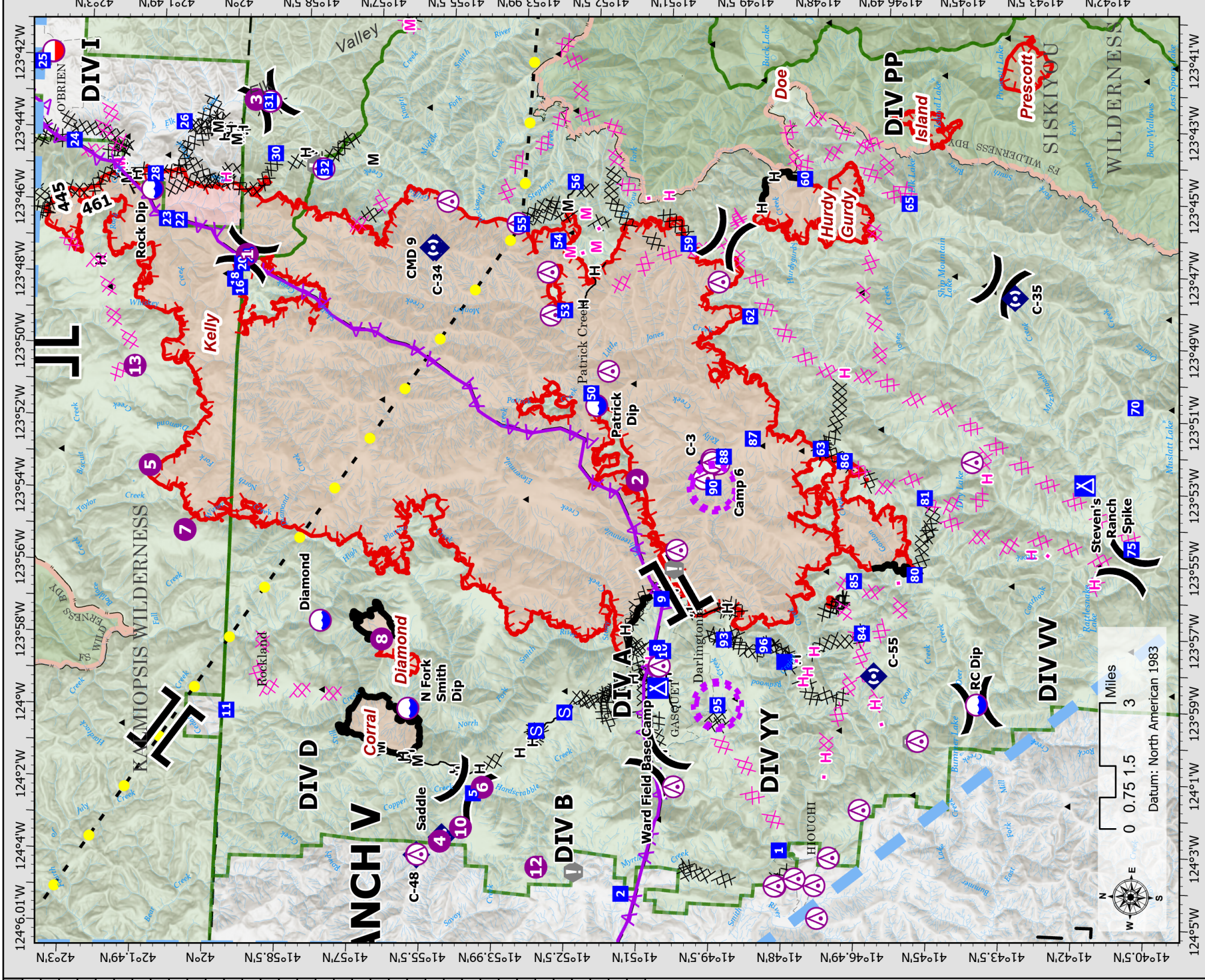
CA-SRF-000968  
08/31/2023

83,972 acres  
updated

- Smith River Cx Fire Perimeter
- - - Other Incident Fire Perimeter
- Contained
- Other Contained
- Other Uncontained
- Transmission Lines
- Completed Dozer Line
- Completed Hand Line
- Completed Mixed Construction Line
- Planned Dozer Line
- H Planned Hand Line
- M Planned Mixed Construction Line
- Highlighted Feature
- ▲ Aerial Hazard
- UAS LRZ (300 ft)
- Temporary Flight Restriction
- ▲ Summit; Gap
- Aerial Hazard
- Dip Site
- Mobile Retardant Base
- Helispot
- Helibase
- X Division Break
- || Branch Break
- Incident Command Post
- Drop Point
- Camp
- Staging Area
- Value at Risk
- Mobile Weather Unit
- Repeater







Point Type	Label	Latitude	Longitude	Elevation	Point Type	Label	Latitude	Longitude	Elevation
Camp	Steven's Ranch Spike	41° 42.082' N	123° 52.831' W		Drop Point	70	41° 41.102' N	123° 50.629' W	
Camp	Ward Field Base Camp	41° 50.755' N	123° 58.898' W		Drop Point	75	41° 41.065' N	123° 54.537' W	
Dip Site	Diamond	41° 57.811' N	123° 57.412' W	700	Drop Point	80	41° 50.808' N	123° 57.784' W	
Dip Site	N Fork Smith Dip	41° 55.920' N	123° 59.741' W		Drop Point	81	41° 45.535' N	123° 55.480' W	
Dip Site	Patrick Dip	41° 52.268' N	123° 51.165' W		Drop Point	84	41° 45.390' N	123° 53.350' W	
Dip Site	RC Dip	41° 44.143' N	123° 58.995' W	345	Drop Point	85	41° 46.578' N	123° 57.152' W	
Dip Site	Rock Dip	42° 01.650' N	123° 45.641' W		Drop Point	86	41° 46.787' N	123° 55.718' W	
Drop Point	1	41° 48.111' N	124° 03.234' W		Drop Point	87	41° 47.081' N	123° 52.416' W	
Drop Point	10	41° 50.682' N	123° 57.866' W		Drop Point	88	41° 49.004' N	123° 51.903' W	
Drop Point	11	41° 59.680' N	123° 59.992' W	2331	Drop Point	90	41° 49.590' N	123° 52.432' W	
Drop Point	16	41° 59.757' N	123° 48.268' W		Drop Point	91	41° 50.757' N	123° 56.427' W	
Drop Point	18	41° 59.868' N	123° 48.042' W		Drop Point	93	41° 49.781' N	123° 53.296' W	
Drop Point	2	41° 51.352' N	124° 04.619' W		Drop Point	95	41° 49.432' N	123° 57.480' W	
Drop Point	20	41° 59.736' N	123° 47.601' W		Drop Point	96	41° 49.508' N	123° 59.299' W	
Drop Point	22	42° 01.062' N	123° 46.472' W		Drop Point	99	41° 48.606' N	123° 57.598' W	
Drop Point	23	42° 01.330' N	123° 46.438' W	3500	Helispot	1	41° 59.635' N	123° 47.356' W	3500
Drop Point	24	42° 03.304' N	123° 44.365' W	2400	Helispot	10	41° 54.727' N	124° 02.973' W	2400
Drop Point	25	42° 04.033' N	123° 42.203' W	1920	Helispot	12	41° 53.128' N	124° 03.984' W	1920
Drop Point	26	42° 01.041' N	123° 43.735' W	4000	Helispot	13	42° 01.867' N	123° 50.567' W	4000
Drop Point	28	42° 01.599' N	123° 45.210' W	1000	Helispot	2	41° 51.365' N	123° 53.178' W	1000
Drop Point	30	41° 59.121' N	123° 44.524' W	1700	Helispot	3	41° 59.577' N	123° 43.053' W	1700
Drop Point	31	41° 59.312' N	123° 43.086' W	2120	Helispot	4	41° 55.148' N	124° 03.379' W	2120
Drop Point	32	41° 58.098' N	123° 44.868' W		Helispot	5	42° 01.470' N	123° 53.299' W	
Drop Point	4	41° 55.131' N	124° 03.341' W	2083	Helispot	6	41° 54.312' N	124° 01.841' W	1612
Drop Point	5	41° 54.497' N	124° 02.015' W		Helispot	7	42° 00.692' N	123° 55.056' W	
Drop Point	50	41° 52.389' N	123° 50.831' W		Helispot	8	41° 56.525' N	123° 57.858' W	3000
Drop Point	53	41° 53.001' N	123° 48.564' W		Mobile Weather Unit	Camp 6	41° 49.700' N	123° 52.578' W	
Drop Point	54	41° 53.197' N	123° 46.643' W		Mobile Weather Unit	Saddle	41° 55.110' N	124° 03.264' W	
Drop Point	55	41° 53.966' N	123° 46.210' W		Repeater	C-3	41° 49.845' N	123° 52.604' W	
Drop Point	56	41° 52.888' N	123° 44.982' W		Repeater	C-34	41° 55.726' N	123° 46.958' W	
Drop Point	59	41° 50.498' N	123° 46.576' W		Repeater	C-35	41° 43.686' N	123° 47.732' W	
Drop Point	60	41° 48.137' N	123° 44.657' W		Repeater	C-48	41° 55.617' N	124° 03.780' W	
Drop Point	62	41° 49.161' N	123° 48.529' W	2791	Repeater	C-55	41° 46.298' N	123° 58.317' W	2791
Drop Point	63				Repeater	CMD 9	41° 55.789' N	123° 46.959' W	
Drop Point	65	41° 45.951' N	123° 45.231' W						

Frequencies	TX	Tone	RX	Tone	AM / FM
Command-South	168.0750	(T3) 131.8	170.4250	(T3) 131.8	FM
Command-North Bowlan	162.6125	(T31) 186.2	170.6000	(T17) 67.0	FM
Command-North Fiddler	162.6125	(T30) 179.9	170.5000	(T17) 67.0	FM
AIR / GROUND - TACTICAL	169.4875	0.0000	169.4875	0.0000	FM
AIR/AIR ROTARY WING	123.7250	0.0000	123.7250	0.0000	AM
TFR	126.0750	0.0000	126.0750	0.0000	AM
AIR TACTICS	173.7000	0.0000	173.7000	0.0000	FM
AIR/GROUND COMMAND	173.8500	0.0000	173.8500	0.0000	AM
V/MEC 29-MEDICAL North	155.3475	156.7	155.3475	156.7	AM
TOLC	168.1375	0.0000	168.1375	0.0000	FM
CALCORD - MEDICAL South	156.0750	156.7 (6)	156.0750	156.7 (6)	FM
AIRGUARD - Emergency Only	166.6250	110.9 (1)	166.6250	0.0000	FM