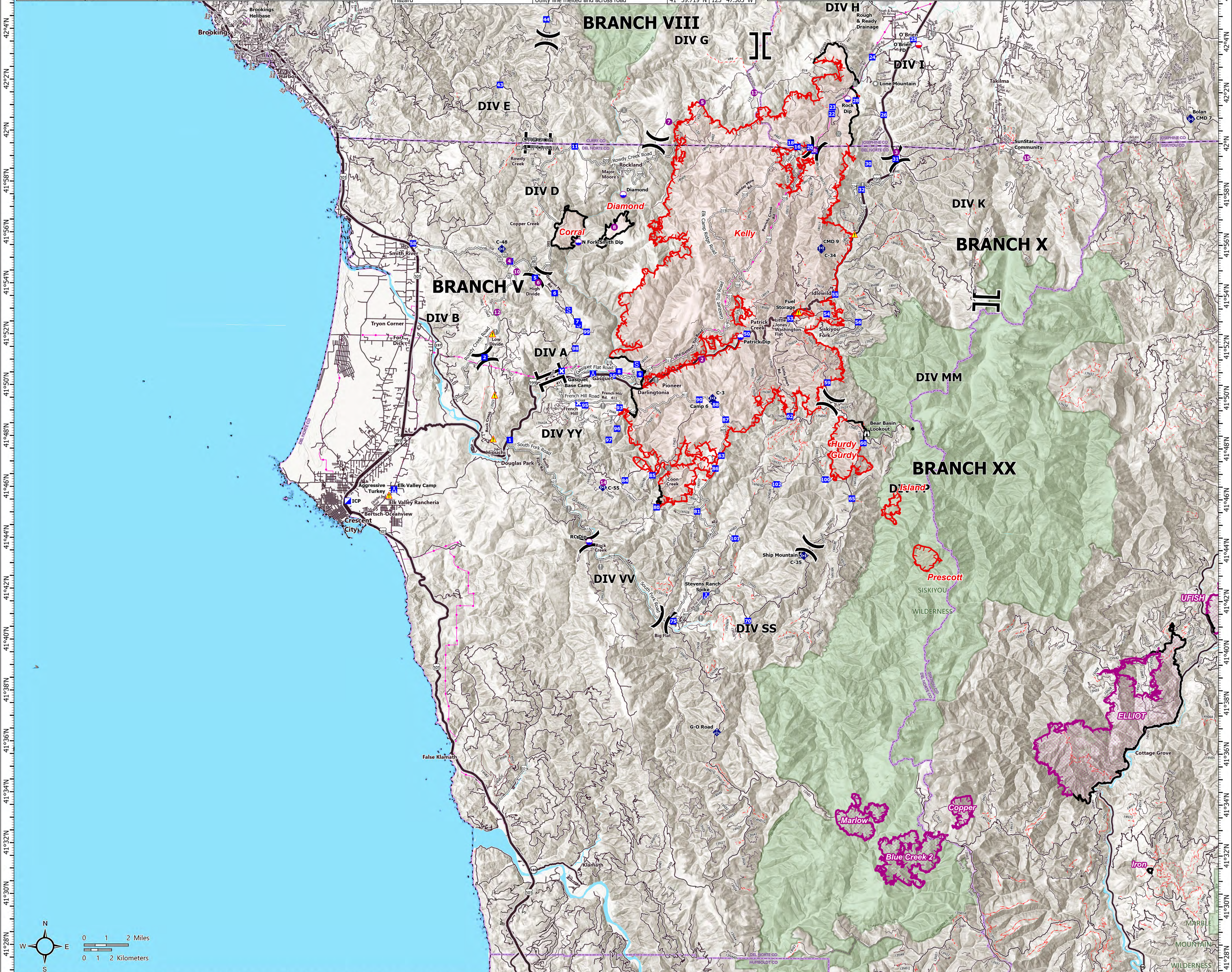


FC Point Type	Label	Comments	Lati WGS84	Long WGS84	FC Point Type	Label	Comments	Lati WGS84	Long WGS84	FC Point Type	Label	Comments	Lati WGS84	Long WGS84
Branch Break			42° 00.916' N	124° 00.538' W	Drop Point	32	New Drop Point Kilo	41° 58.998' N	123° 44.868' W	Hazard	Aggressive Turkey		41° 53.268' N	123° 48.130' W
Branch Break			41° 53.772' N	123° 38.257' W	Drop Point	4	Large gravel pit that can be used as a drop point or as a staging area. Can also be used as a medic site for a Type 2 or 3 helicopter.	41° 55.131' N	124° 03.341' W	Hazard	Fuel Storage	fuel cell, roughly 500 gallons. unsure on amount in tank	41° 53.268' N	123° 48.130' W
Branch Break			41° 50.464' N	123° 56.047' W						Helibase	Brookings Helibase		42° 04.433' N	124° 17.390' W
Branch Break			42° 03.709' N	123° 50.274' W	Drop Point	43		42° 02.062' N	124° 03.981' W	Helibase	Cave Junction		42° 06.250' N	123° 40.917' W
Bridge			42° 00.287' N	123° 46.107' W	Drop Point	44		42° 04.660' N	124° 01.580' W	Helispot	1	HIGE needs dust abatement.	41° 59.635' N	123° 47.356' W
Bridge			42° 03.709' N	123° 50.274' W	Drop Point	45	Needed for contingency group	42° 08.970' N	123° 42.165' W	Helispot	10	Good gravel. Type 3 Only. 2-way approach. HOGE	41° 54.727' N	124° 02.973' W
Bridge		Be Nard McClendon bridge over the North Fork of the Smith River.	41° 58.869' N	123° 57.663' W	Drop Point	46		42° 06.262' N	124° 01.163' W	Helispot	12	Large open gravel pit. Type 283. HOGE	41° 53.128' N	124° 03.984' W
Bridge		Coon Creek Bridge	41° 47.079' N	123° 54.870' W	Drop Point	47		42° 09.282' N	124° 04.771' W	Helispot	13	Type 2-3 approved. Dust abate.	42° 01.867' N	123° 50.567' W
Bridge		Last inspected 6/1/2022.	42° 01.128' N	123° 57.415' W	Drop Point	48	Propped DP	42° 09.378' N	124° 06.644' W	Helispot	14	Approved by HUCO 1530 9/2.	41° 59.400' N	123° 36.180' W
Bridge		Need clearance for heavy equipment. Just heard from Branch 20 the local resource advisor says the bridge is good for transport access.	41° 42.258' N	123° 52.253' W	Drop Point	49	Proposed DP	41° 54.497' N	124° 02.015' W	Helispot	15	Approved. Type 2 or Type 3	41° 51.365' N	123° 43.178' W
Bridge		Per property owner, bridge was rated at 5 tons during Coon Fire in 2015.	41° 41.833' N	123° 52.939' W	Drop Point	50		41° 53.389' N	123° 48.831' W	Helispot	2	Type 1-2-3 approved. No dust abate.	41° 55.148' N	124° 03.379' W
Bridge		Small bridge over ditch to gain access to structures. Will not support large truck.	41° 41.571' N	123° 53.340' W	Drop Point	53	Div MM requested new DP at this location, Leonard ARCH cleared 8/25	41° 53.001' N	123° 48.564' W	Helispot	4	Good Type 2 & 3 Gravel but not too dusty. HOGE	42° 01.470' N	123° 53.299' W
Bridge		Type 6 Engines only. No Tenders or Type 3	42° 04.258' N	123° 41.143' W	Drop Point	54	Create a Drop Point Please DIV MM (t) Josh Fudge	41° 53.197' N	123° 46.643' W	Helispot	5	Potential dust abatement needed. Type 3 only. HOGE	41° 54.312' N	124° 01.841' W
Bridge		Wood bridge. Structure wrapped. 8.25	42° 01.345' N	123° 46.453' W	Drop Point	55	Road intersection that can be used as a drop point, is large enough that it can potentially be used as a medic site for a Type 3 and potentially a Type 2 helicopter	41° 53.966' N	123° 46.210' W	Helispot	6		42° 00.692' N	123° 55.056' W
Bridge		Wooden bridge. Wrapped 8.25	42° 02.248' N	123° 45.257' W	Drop Point	56		41° 52.888' N	123° 44.982' W	Helispot	7		41° 56.525' N	123° 57.858' W
Camp	Elk Valley Camp		41° 46.112' N	124° 09.222' W						Helispot	8	Type 2 and 3 approved. Dust abate. / minimal improvements needed 6-8 small trees. No other Hazards identified, Type 2 or 3, No Dust abatement needed	41° 54.636' N	124° 11.704' W
Camp	Gasquet Base Camp		41° 50.755' N	123° 58.898' W						Incident Command Post	ICP		42° 15.431' N	123° 34.177' W
Camp	Stevens Ranch Spike		41° 42.082' N	123° 52.831' W	Drop Point	58	Placed per Div B - Bill Tavares; at large turnout with hydrant	41° 55.788' N	124° 08.458' W	Incident Command Post	Lake Selmac ICP		42° 02.269' N	123° 44.186' W
Closure			41° 49.588' N	123° 59.637' W	Drop Point	59		41° 50.498' N	123° 46.576' W	Landmark	Lone Mountain	Potential repeater site and raws	41° 53.128' N	124° 03.984' W
Closure	Gasquet Mt Rd Closure 8/30/23		41° 50.850' N	124° 00.552' W	Drop Point	6		41° 53.907' N	124° 00.970' W	Lookout	Ship Mountain		42° 03.812' N	123° 47.824' W
Dip Site	Diamond	Diamond Dip	41° 57.811' N	123° 57.412' W	Drop Point	60		41° 48.137' N	123° 44.657' W	Mobile Retardant Base			42° 03.810' N	123° 41.920' W
Dip Site	N Fork Smith Dip		41° 55.920' N	123° 59.741' W	Drop Point	62	Good staging area	41° 49.161' N	123° 48.529' W	Mobile Retardant Base			41° 49.700' N	123° 52.578' W
Dip Site	Patrick Dip		41° 52.268' N	123° 51.165' W	Drop Point	63		41° 49.432' N	123° 52.480' W	Mobile Weather Unit	Camp 6		42° 00.992' N	123° 52.196' W
Dip Site	RC Dip	Potential Dip Site	41° 44.143' N	123° 58.995' W	Drop Point	64		41° 45.535' N	123° 55.480' W	Repeater	G-O Road		41° 49.845' N	123° 52.604' W
Dip Site	Rock Dip		42° 01.650' N	123° 45.641' W	Drop Point	65	Very small better use is for a water tank	41° 45.390' N	123° 53.350' W	Repeater	C-3		41° 55.726' N	123° 46.958' W
Dip Site	Seat Dip		42° 05.650' N	123° 42.329' W	Drop Point	66		41° 46.578' N	123° 57.152' W	Repeater	C-34		41° 43.686' N	123° 47.732' W
Division Break			41° 49.730' N	123° 46.405' W	Drop Point	67		41° 46.781' N	123° 52.416' W	Repeater	C-48	High Divide	41° 55.170' N	124° 03.780' W
Division Break			41° 43.989' N	123° 47.423' W	Drop Point	70		41° 47.081' N	123° 52.416' W	Repeater	C-55		41° 46.298' N	123° 58.317' W
Division Break			41° 41.122' N	123° 55.025' W	Drop Point	75		41° 49.004' N	123° 51.903' W	Repeater	CMD 7	Boland Peak Kit#4312-FCK-C221 RPTR ID: C43	42° 00.954' N	123° 27.535' W
Division Break			41° 59.635' N	123° 47.356' W	Drop Point	80	New DP 8 due to school reopening	41° 49.590' N	123° 52.432' W	Repeater	CMD 8	8 Dollar Mt. Kit# 4312-FCK-C163 RPTR ID: C53	42° 15.475' N	123° 39.686' W
Division Break			41° 54.651' N	124° 01.874' W	Drop Point	81		41° 50.755' N	123° 56.427' W	Repeater	CMD 9	Monkey Ridge Kit#4312-FCK-C203 Rptr ID: C51	41° 55.789' N	123° 46.959' W
Division Break			41° 50.686' N	124° 00.985' W	Drop Point	84		41° 49.781' N	123° 53.296' W	Repeater	Fidler		42° 14.422' N	123° 46.037' W
Division Break			41° 59.312' N	123° 43.086' W	Drop Point	85		41° 49.432' N	123° 52.480' W	Staging Area		50'x50'	41° 51.145' N	123° 56.605' W
Division Break			41° 45.799' N	124° 00.342' W	Drop Point	86		41° 49.508' N	123° 59.299' W	Staging Area		Dozer here to create staging area	41° 53.245' N	124° 00.215' W
Division Break			41° 59.868' N	123° 55.743' W	Drop Point	87		41° 48.606' N	123° 57.598' W	Staging Area			41° 52.675' N	123° 59.677' W
Division Break		Echo Foxtrof Break	42° 03.863' N	124° 01.525' W	Drop Point	88		41° 48.162' N	123° 58.026' W	Staging Area		Rough & Ready Staging	42° 06.307' N	123° 40.782' W
Drop Point	1		41° 48.111' N	124° 03.234' W	Drop Point	9		41° 51.741' N	123° 59.837' W	Value at Risk		Big Flat	41° 41.185' N	123° 53.104' W
Drop Point	10		41° 50.682' N	123° 57.866' W	Drop Point	90		41° 52.400' N	123° 59.253' W	Value at Risk		Community of O'Brien	42° 04.047' N	123° 42.189' W
Drop Point	100	Fox Ridge	41° 46.689' N	123° 46.627' W	Drop Point	93		42° 04.050' N	123° 42.213' W	Value at Risk		DOT/CHP infrastructure	41° 58.272' N	123° 48.811' W
Drop Point	101	Drop Point in DIVS SS	41° 44.339' N	123° 51.339' W	Drop Point	95		41° 52.391' N	124° 02.582' W	Value at Risk		French Hill	41° 49.491' N	123° 58.356' W
Drop Point	102	DIVS SS Drop	41° 46.486' N	123° 49.192' W	Drop Point	96		41° 55.205' N	124° 03.872' W	Value at Risk		Gasquet	41° 50.574' N	123° 58.387' W
Drop Point	11	Possible drop point or staging area location. With the removal of a few trees could be used as a medic site for a Type 3 helicopter.	41° 59.680' N	123° 59.992' W	Drop Point	97		41° 55.392' N	124° 03.627' W	Value at Risk		Hiouchi	41° 47.620' N	124° 03.968' W
Drop Point	16		41° 59.757' N	123° 48.268' W	Drop Point	99		41° 54.566' N	124° 03.373' W	Value at Risk		Pappas Flats	41° 50.740' N	123° 59.739' W
Drop Point	18		41° 59.916' N	123° 48.618' W	Drop Point	99		41° 55.021' N	124° 02.990' W	Value at Risk		Rock Creek	41° 43.169' N	124° 04.069' W
Drop Point	2	several dozer pushes to clear area. several trees removed	41° 51.352' N	124° 04.619' W	Gate		Gate to 1700 Lower Divide Residence	41° 55.255' N	124° 02.582' W	Value at Risk		Seismographic sensor and solar panel assembly.	41° 52.351' N	124° 04.069' W
Drop Point	20		41° 59.736' N	123° 47.601' W	Gate		Gate to driveway off of the Rowdy Creek Road.	41° 55.392' N	124° 03.627' W	Value at Risk		Solar panels, radio antenna, cameras	41° 50.527' N	123° 55.581' W
Drop Point	21	DP 21	41° 59.610' N	123° 47.363' W	Gate		Locked gate at the top of driveway leading down to structures	41° 55.392' N	124° 03.627' W	Value at Risk		Spring fed water supply line to house	41° 48.515' N	123° 44.480' W
Drop Point	22	DP 22	42° 01.062' N	123° 46.472' W	Gate		Locked gate at top of driveway.	41° 54.566' N	124° 03.373' W	Value at Risk		Tollefson House	41° 45.488' N	124° 00.081' W
Drop Point	23	DP 23	42° 01.330' N	123° 46.438' W	Gate		Locked gate on driveway	41° 55.021' N	124° 02.990' W	Value at Risk		Value at Risk	41° 55.170' N	124° 03.780' W
Drop Point	24	DP 24	42° 03.304' N	123° 44.365' W	Gate		Second Gate located on driveway.	41° 55.255' N	124° 02.582' W	Value at Risk		Value at Risk	41° 50.527' N	123° 55.581' W
Drop Point	25	DP 25	42° 04.033' N	123° 42.203' W	Hazard		CALTran Log and Brush landing	41° 56.338' N	123° 45.217' W	Value at Risk		Value at Risk	41° 48.515' N	123° 44.480' W
Drop Point	26	DP 26	42° 01.041' N	123° 43.735' W	Hazard		Possible collapsed mine shaft	41° 48.149' N	124° 04.112' W	Value at Risk		Value at Risk	42° 05.180' N	123° 45.332' W
Drop Point	28	DP 28	42° 01.599' N	123° 45.210' W	Hazard		soft shoulder on west side of dozerline/road. pink flagging	41° 49.868' N	124° 04.062' W	Value at Risk		Value at Risk	41° 59.622' N	123° 36.977' W
Drop Point	30	DP 30	41° 59.121' N	123° 44.524' W	Hazard		Uncapped well	41° 52.277' N	124° 04.218' W	Value at Risk		Value at Risk	41° 59.622' N	123° 36.977' W
Drop Point	31	DP31 at bug station	41° 59.312' N	123° 43.086' W	Hazard		Utility line melted and across road	41° 59.719' N	123° 47.505' W	Value at Risk		Value at Risk	41° 59.622' N	123° 36.977' W



TRANSPORTATION
 Smith River Complex - South CA-SRF-000968
 85,429 acres as 9/04/2023 0137 PDT
 09/04/2023

<ul style="list-style-type: none"> Dip Site Mobile Retardant Base Helispot Helibase Division Break 	<ul style="list-style-type: none"> Branch Break Incident Command Post Drop Point Closure Camp 	<ul style="list-style-type: none"> Staging Area Value at Risk Landmark Gate 	<ul style="list-style-type: none"> Fire Station Bridge Mobile Weather Unit Repeater Hazard 	<ul style="list-style-type: none"> Contained Uncontained Smith River Cx Wildfire Perimeter Other Incident Wildfire Perimeter 	<ul style="list-style-type: none"> Contained (OTHER) Interstate Highway Local Connecting Road 	<ul style="list-style-type: none"> County Road Paved Road Gravel Road Primitive Road Closed Roads 	<ul style="list-style-type: none"> Powerline County Boundary Federal Wilderness Boundary State Boundary
---	--	---	---	--	---	--	--

SOUTHWEST AREA
 INCIDENT MANAGEMENT TEAM