

# Operations

Smith River Complex North  
CA-SRF-000968

9/5/2023 24hr

85,429 acres at 9/04/2023 0137 PDT



PACIFIC OCEAN

PACIFIC OCEAN

PACIFIC OCEAN

PACIFIC OCEAN

PACIFIC OCEAN

PACIFIC OCEAN

PACIFIC OCEAN

PACIFIC OCEAN

PACIFIC OCEAN

PACIFIC OCEAN

PACIFIC OCEAN

PACIFIC OCEAN

PACIFIC OCEAN

PACIFIC OCEAN

PACIFIC OCEAN

PACIFIC OCEAN

PACIFIC OCEAN

PACIFIC OCEAN

PACIFIC OCEAN

PACIFIC OCEAN

PACIFIC OCEAN

PACIFIC OCEAN

PACIFIC OCEAN

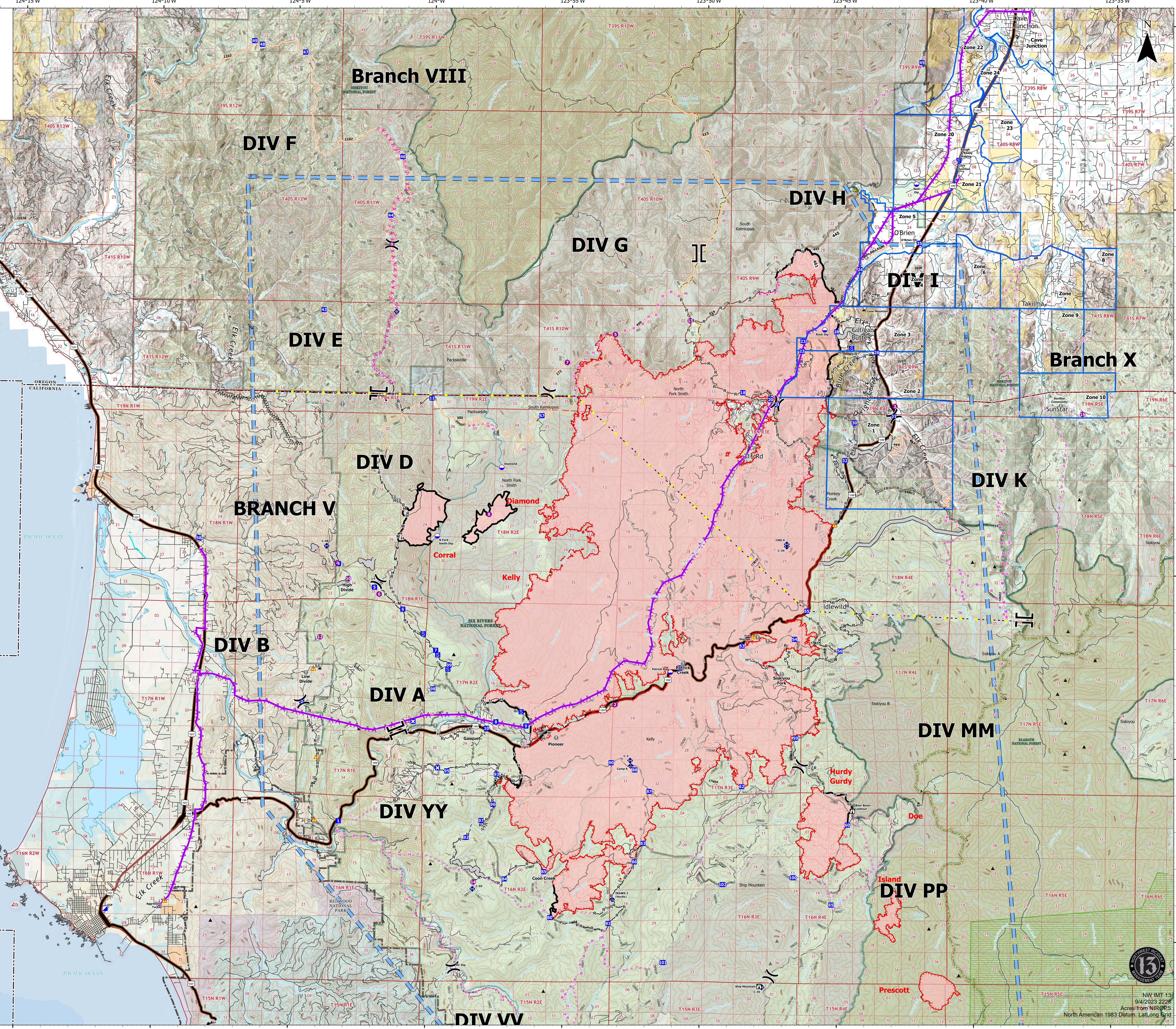
PACIFIC OCEAN

PACIFIC OCEAN

PACIFIC OCEAN

PACIFIC OCEAN

PACIFIC OCEAN



	Planned Wheel Construction Line	
	Planned Road as Line	
	Planned Secondary Line	
	Access or Improved Road	
	Highlighted Feature	
	Aerial Hazard	
	Temporary Flight Restriction	
	Uncollected	
	City, County, Other	
	State	
	BLM	
	ANCSA/Private	
	USFS	
	USFS	
	NPS	
	Nonresidential Shore	
	Fire Station	
	Mobile Weather Unit	
	Internet Access	
	Repeater	
	Safety Zone	
	Wildfire Daily Fire Perimeter	
	Completed Burnout	
	Completed Outer Line	
	Completed Fuel Break	
	Completed Hand Line	
	Completed Wheel Construction Line	
	Planned Burnout	
	Planned Outer Line	
	Planned Hand Line	
	Planned Wheel Construction Line	
	Access or Improved Road	
	Highlighted Feature	
	Aerial Hazard	
	Temporary Flight Restriction	
	Uncollected	