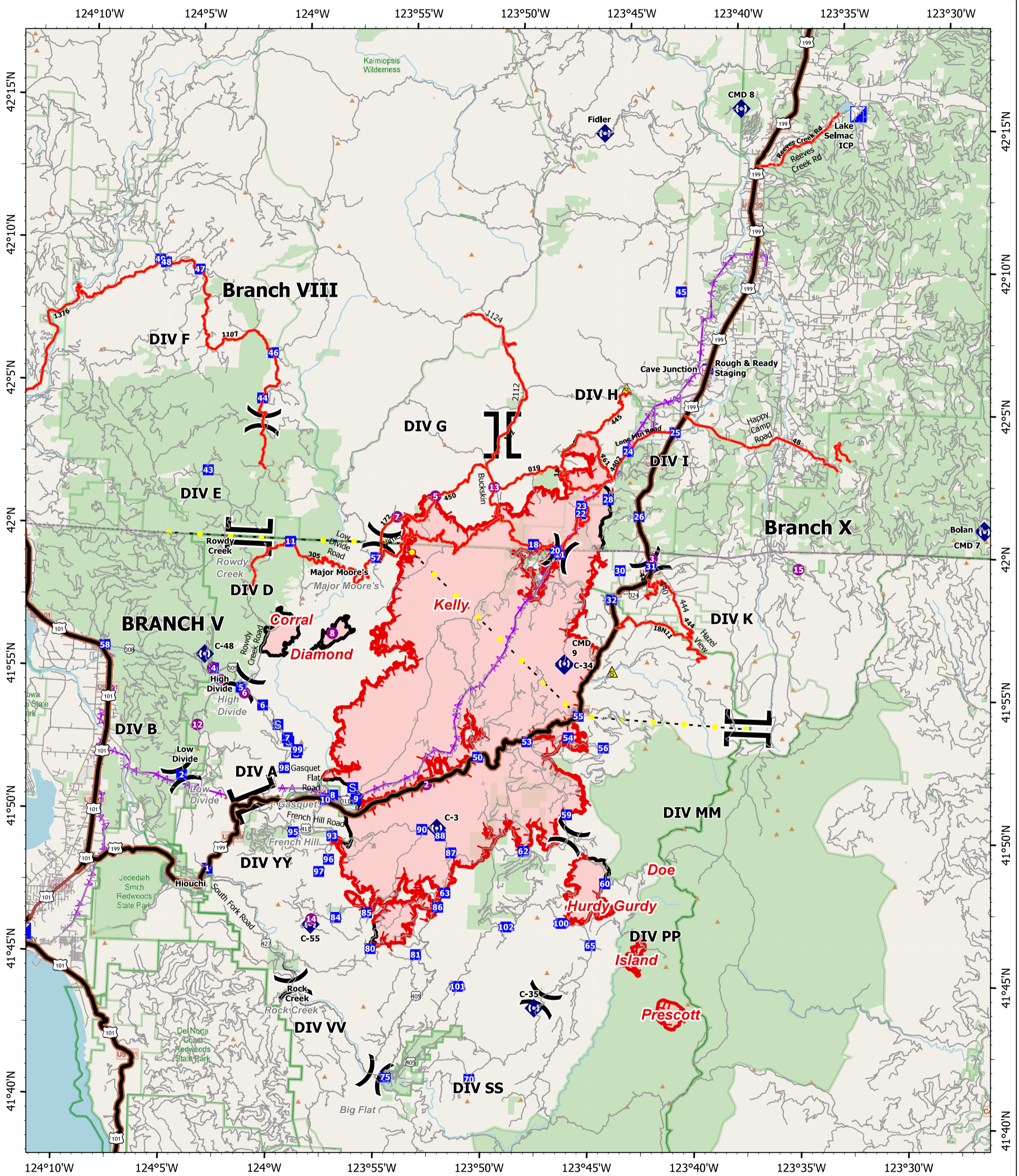


TRANSPORTATION

9/5/2023

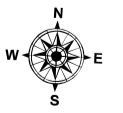


SMITH RIVER COMPLEX NORTH

9/5/2023

85,429 acres
IR updated 9/04/2023 0137 PDT

- | | | | |
|-----------------------|---------------------|---------------|-------------------------------|
| Helispot | Drop Point | Aerial Hazard | Tunnel |
| Helibase | Staging Area | Contained | Minor roads |
| Division Break | Repeater | Uncontained | Major ops roads |
| Branch Break | Safety Zone | County Road | USGS Roads |
| Incident Command Post | Highlighted Feature | Major Roads | Wildfire Daily Fire Perimeter |
| | | Expressway | |
| | | Secondary Hwy | |



0 1 2 4 Miles
Datum: North American 1983

Author Name Updated: 9/4/2023 1804