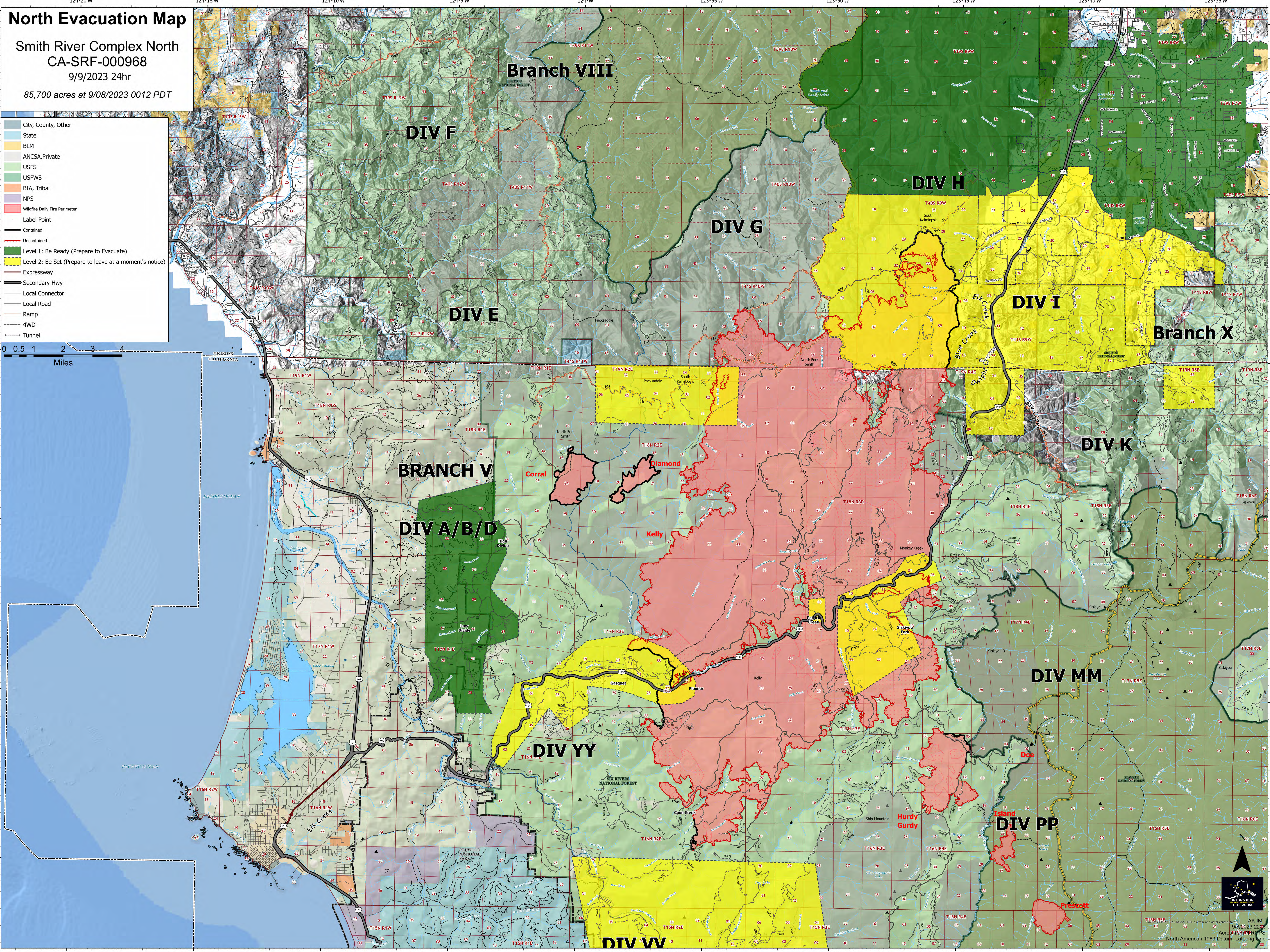


North Evacuation Map

Smith River Complex North
CA-SRF-000968
9/9/2023 24hr

85,700 acres at 9/08/2023 0012 PDT

- City, County, Other
- State
- BLM
- ANCSA, Private
- USFS
- USFWS
- BIA, Tribal
- NPS
- Wildfire Daily Fire Perimeter
- Label Point
- Contained
- Uncontained
- Level 1: Be Ready (Prepare to Evacuate)
- Level 2: Be Set (Prepare to leave at a moment's notice)
- Expressway
- Secondary Hwy
- Local Connector
- Local Road
- Ramp
- 4WD
- Tunnel



AK IMT
9/8/2023 2200
Acres from NUR of US
North American 1983 Datum, Lat, Long, UTM