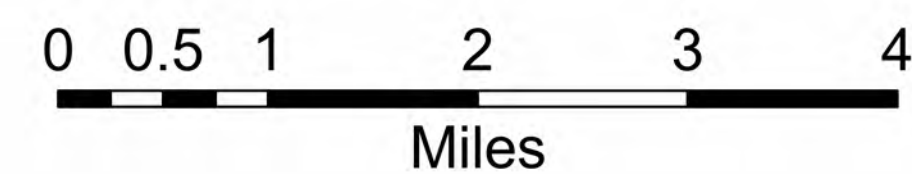


Operations

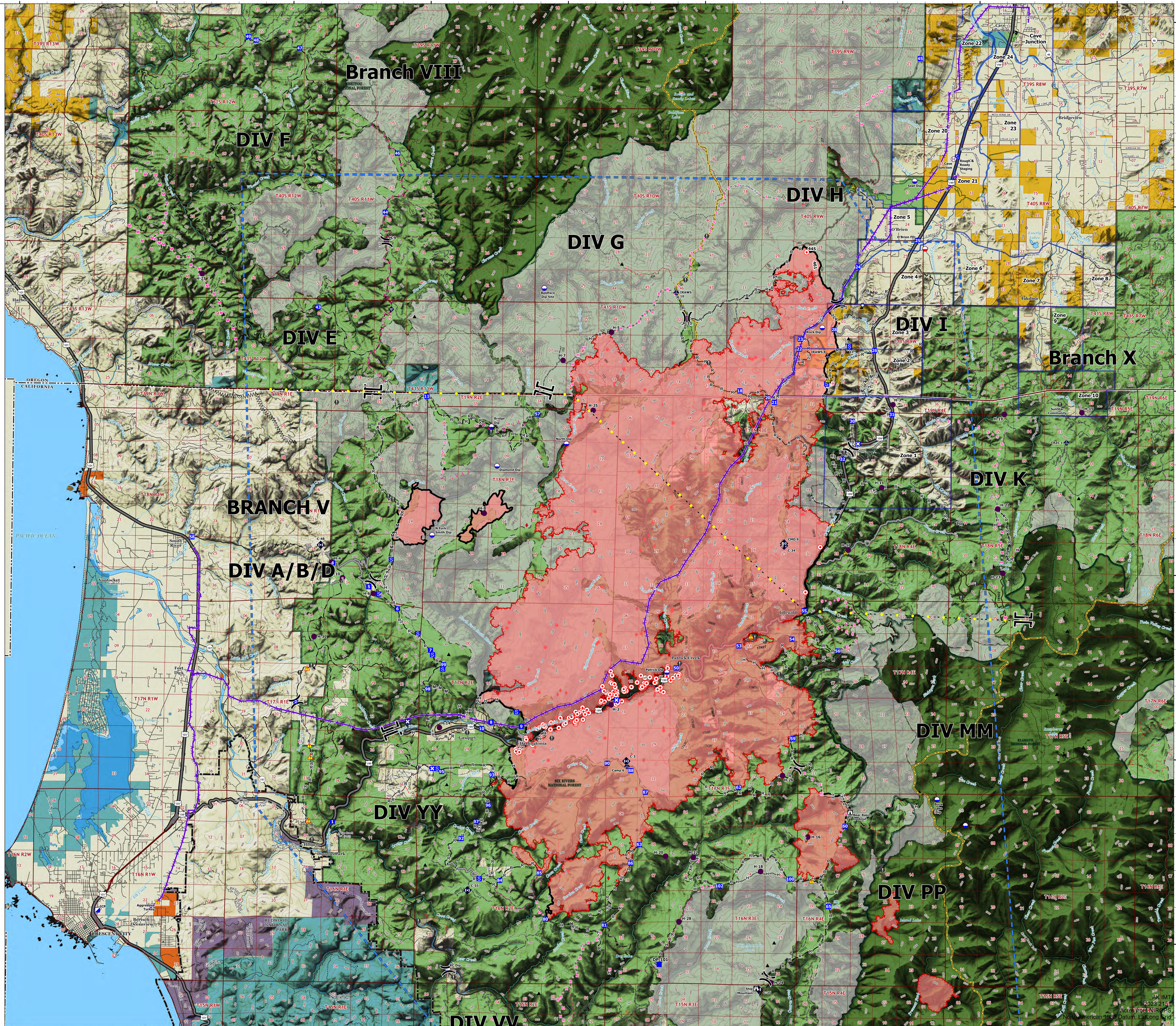
Smith River Complex North
CA-SRF-000968

9/10/2023

85,708 acres at 9/08/2023 2036 PDT



- Structure Zones
- Dip Site
- Mobile Retardant Base
- Hellspot
- Helibase
- Division Break
- Branch Break
- Incident Command Post
- Drop Point
- Closure
- Staging Area
- Lookout
- Hot Spot - Spot Fire
- Value at Risk
- Landmark
- Fire Station
- Mobile Weather Unit
- Internet Access
- Repeater
- Safety Zone
- Hazard
- Completed Burnout
- Completed Dozer Line
- MAA Completed Fuel Break
- M- Completed Hand Line
- M- Completed Mixed Construction Line
- R- Completed Road as Line
- Planned Dozer Line
- V Planned Fuel Break
- Planned Hand Line
- Planned Mixed Construction Line
- Planned Road as Line
- Planned Secondary Line
- Access or Improved Road
- Highlighted Feature
- Aerial Hazard
- Temporary Flight Restriction
- Contained
- Uncountained
- Wildfire Daily Fire Perimeter
- Symbol, Surface_Type, Oper_Maint_Level
- Paved Road
- Gravel Road
- Dirt Roads
- Unimproved Roads
- Closed Roads
- TNMFRS
- Expressway
- Secondary Hwy
- Local Connector
- Local Road
- Ramp
- 4WD
- Tunnel
- Trail
- City, County, Other
- State
- BLM
- ANCSA, Private
- USFS
- USFWS
- BIA, Tribal
- NPS
- National Wilderness Areas
- Peaks
- State or Territory
- County or Equivalent
- NPS
- Forest Service
- RoadlessArea



124°20'W 124°15'W 124°10'W 124°5'W 124°W 123°55'W 123°50'W 123°45'W 123°40'W 123°35'W

42°10'N 42°5'N 41°55'N 41°50'N 41°45'N